

Palos Verdes Kelp Forest Restoration Project

Project Year 3: July 2015 – June 2016

Prepared by:

The Bay Foundation

(Tom Ford, Heather Burdick, Parker House, and Armand Barilotti)

Vantuna Research Group

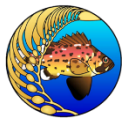
(Dan Pondella, Jonathan Williams, and Chelsea Williams)



The Bay Foundation
P.O. Box 13336, Los Angeles, CA 90013
(888) 301-2527
www.santamonicabay.org

Thanks to our Project Partners and Supporters:

The Bay Foundation
Montrose Settlements Restoration Program
NOAA Restoration Center
Commercial Sea Urchin Harvesters
Vantuna Research Group
Southern California Marine Institute
California Science Center



Southern California Marine Institute



Montrose Settlements Restoration Trustee Council:

National Oceanic and Atmospheric Administration
National Park Service
US Fish and Wildlife
California Department of Fish and Wildlife
California State Lands Commission
California Department of Parks and Recreation



Table of Contents

Introduction pg. 4

 Project Background pg. 5

 Kelp Restoration Goals pg. 6

Methods pg. 9

 Description of Restoration, Control, and Reference Sites pg. 9

 Pre-Restoration Monitoring pg. 10

 Post-Restoration Monitoring pg. 10

 Response Monitoring pg. 10

 Community Analyses pg. 11

 Timeline and Effort of Restoration pg. 11

Results pg. 13

 Urchin Densities Pre and Post Restoration pg. 13

 Gonadosomatic Indices of Red and Purple Urchins pg. 20

 Purple and Red Urchin Densities by Site pg. 25

 Giant Kelp Canopy Area and Percent Cover by Site pg. 27

 Giant Kelp Density by Site pg. 31

 Density and Biomass of Kelp Bass and California Sheephead pg. 32

 Species Richness pg. 37

 Community Analyses pg. 38

Conclusions pg. 40

 Evaluation Restoration Activities by Site pg. 40

References pg. 42

Introduction

Kelp forest ecosystems are iconic and productive features along the coast of California with services that span a wide array of consumptive (e.g., commercial and recreational fishing) and non-consumptive (e.g., tourism, scuba diving and coastal protection) uses. Giant Kelp (*Macrocystis pyrifera*) forms a 3-dimensional habitat supporting over 700 species of fish, algae, and invertebrates (Graham, 2004). The importance of kelp as a habitat for fish species is enormous; this habitat functions as nursery habitat for newly settled juvenile fishes and has a demonstrated value as a refuge from predation (Dayton, 1985; Steneck et al., 2002). Drift kelp and associated dissolved organic matter provide an energetic resource to populations of species both within and around kelp beds (Harrold and Reed 1985; Duggins et al., 1989; Graham et al., 2007; Tegner and Dayton, 2000). These habitats support fisheries for a number of invertebrates [e.g., sea urchins (*Strongylocentrotus spp.*), California Spiny Lobster (*Panulirus interruptus*), Warty and California Sea Cucumbers (*Parastichopus spp.*)] and finfish [e.g., Kelp Bass (*Paralabrax clathratus*), California Sheephead (*Semicossyphus pulcher*)], in addition to *Macrocystis pyrifera* being harvested itself for a variety of human uses (Tegner and Dayton, 2000). Through both fishing activities and non-consumptive uses, California's ocean-related activities support the state economy by bringing in 40+ billion dollars a year in revenue (Kildow and Colgan, 2005) and Giant Kelp is a critical and iconic feature of this system.

California kelp forests have been severely depleted by human activity, mainly overfishing, which has caused several ecological shifts within the habitat, primarily attributed to the loss of key predator species (Dayton et al., 1998; Tegner and Dayton, 2000). In a balanced ecosystem, sea urchin consumption of kelp is limited primarily by predation on urchins (Dayton, 1985; Edwards, 2004). Three species historically controlled sea urchin populations in the Southern California Bight (SCB): Southern Sea Otter (*Enhydra lutris nereis*), *Panulirus interruptus* and *Semicossyphus pulcher*. The Southern Sea Otter was locally extirpated in the 1850's (Jackson, 2001). *Panulirus interruptus* and *Semicossyphus pulcher* are under significant fishing pressure, which simultaneously reduces the size and number of individuals able to successfully prey on sea urchins (Cowen, 1983; Lafferty, 2004). Additionally, thriving populations of abalone once served as competitors to urchins (Tegner and Dayton, 2000). Currently two species are now Federally Endangered (Black Abalone, *Haliotis cracherodii*, and White Abalone, *H. sorenseni*) and two more are Federal Species of Concern (Pink Abalone, *H. corrugata*; and Green Abalone, *H. fulgens*) (CDFW, 2005). Thus, both urchin predators and competitors have been chronically depleted throughout the SCB.

Predation is one of the most significant and persistent causes of kelp forest loss in southern California (Steneck et al., 2002). Sea urchins, typically Purple Sea Urchins (*Strongylocentrotus purpuratus*) and Red Sea Urchins (*S. franciscanus*), will aggregate in fronts and clear expanses of kelp forest if left unchecked, leaving the reef devoid of standing macroalgae (Harrold and Reed 1985; Graham 2004). These urchin barrens are observed to support far fewer species and a corresponding decrease in biomass (Bradley and Bradley, 1993; Graham, 2004). This reduction in ecosystem structure and function leads to spatially and temporally unstable kelp forests and reduces production. Though Graham (2004) described urchin barrens in the Channel Islands National Park (CINP) as short-lived and localized, they have persisted for more than 30 years in the northeastern and northwestern Atlantic along the border of Norway and Russia (Norderhaug and Christie, 2009). Similar observations have been made in the northeastern Pacific from Alaska to California (Jackson, 2001; Smith et al., 2004; Steneck et al., 2002). A survey spanning the SCB in 2008 determined that approximately 30% of the reefs

contain urchin barrens (Pondella et al., 2011), suggesting that they are a widespread phenomenon in our region.

Project Background

This project developed from an interest in the protection and preservation of giant kelp communities in the Southern California Bight. Roughly one hundred years of data exists on the extent of giant kelp canopy off of the Palos Verdes Peninsula. These data describe a loss over this timeframe of approximately 80% (Figure 1).

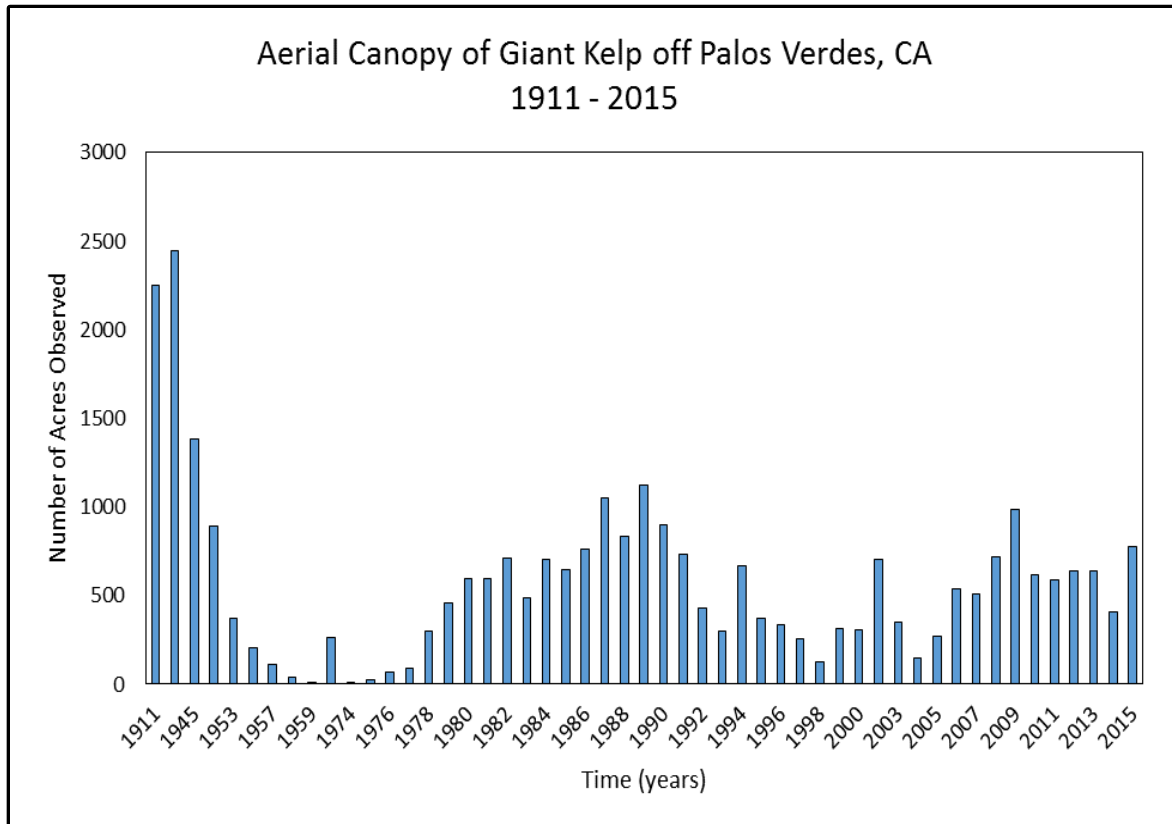


Figure 1. Status of the Kelp Beds 2015, Ventura Los Angeles, Orange, and San Diego Counties. Central Region Kelp Survey Consortium and Region Nine Kelp Survey Consortium, July 2016. Prepared by: MBC Applied Environmental Sciences. Costa Mesa, CA 92626

Subtidal observations based upon mapping efforts conducted by the Santa Monica Baykeeper in 2010 identified large expanses of nearshore rocky reef that were dominated by high densities of sea urchins, *Strongylocentrotus purpuratus* and *Strongylocentrotus franciscanus*. In total, 61.5 hectares were described to exist in an urchin barren state. Subsequent SCUBA based community monitoring has further qualified these barrens as areas featuring low diversity and productivity relative to areas of the Palos Verdes Peninsula supporting temporally and spatially stable giant kelp forests. Additional study has defined the status of the urchins themselves in these barrens of being in poor physical condition with low gonadosomatic indices relative to urchins in neighboring kelp forests (Claisse et al. 2013).

The persistence of these urchin barrens, especially in the context of favorable conditions for giant kelp recruitment and development in southern California, argues for the active restoration of these barren reefs.

Kelp forests in Santa Monica Bay, adjacent to the largest urban area on the west coast of the United States, are directly affected by anthropogenic impacts associated with urban development and population increase. These include an extensive and diverse set of stressors (e.g., commercial and recreational fishing, sedimentation, urban runoff, and pollution) (Stull et al. 1987; Dojiri et al. 2003; Schiff 2003; Love 2006; Pondella 2009; Foster and Schiel 2010; Sikich and James 2010; Erisman et al. 2011) that combine to further contribute to the decline of productive, stable kelp habitat along this important stretch of coastline. Given the complexity of factors impacting these urban rocky reefs, conservation and resource management efforts demand an equally diverse and proactive suite of strategies. One such endeavor is kelp restoration as conducted by The Bay Foundation, and the partners of the project which include, commercial sea urchin harvesters, academic researchers, federal and state biologists and resource managers, and public aquaria.

To enable the recovery of historical kelp forests in Santa Monica Bay, the “Kelp Project” has engaged in sea urchin suppression to reduce the density of urchins on shallow rocky reefs since 1997, these early efforts (1997-2009) were supported by the Santa Monica Baykeeper. The Kelp Project has demonstrated that reducing urchin density from as high as 100 sea urchins per square meter to < 2 sea urchins per square meter enabled the natural development of Giant Kelp and other macroalgae at restoration areas in Malibu and Palos Verdes (Figures 2, 3). Restoration areas off of Escondido Beach, Malibu have proven resilient to disturbances for over 10 years. After reaching restoration targets of < 2 sea urchins per square meter and > 1 Giant Kelp holdfast per 10 square meters the restoration measures were stopped in 2004 (Ford and Meux 2010). The kelp in this area has matured and recovered from many disturbances of note, namely large-scale red tide events in 2005 and 2006 and a 200-year storm event in the same period. This resilience to disturbance was a key test for the permanence of the restoration effort. Surveys performed in the restoration areas off Escondido Beach in 2008 have quantified large kelp plants in high densities (Pondella et al. 2011). Kelp restoration efforts are now focused on 54 hectares of existing urchin barrens which have been identified along the Palos Verdes Peninsula (Figure 4).

Kelp Restoration Goals

The purpose of the project is to reduce the density of purple sea urchins (*Strongylocentrotus purpuratus*) to two per square meter within the boundaries of sea urchin barrens off the Palos Verdes Peninsula. This will allow for the recruitment and development of giant kelp, (*Macrocystis pyrifera*) and other species of macroalgae. This project will reduce sea urchin grazing pressure to restore biogenic habitat to rocky reefs that historically supported kelp forests. This will increase the spatial and temporal stability, biomass and production associated with the kelp forest/rocky reefs on the Palos Verdes Peninsula.

In addition, an initial focus of the kelp project has been to generate a more inclusive community engaged in the management of this highly productive and highly valued ecosystem. The Red Sea Urchin (*Strongylocentrotus franciscanus*) fishery is one of the most important commercial fisheries in the State of California. In 2015, *S. franciscanus* landings ranked 4th by weight (8.1 million lbs.) and 7th in value (6.8 million US Dollars) (CDFW 2016). The gonads of both male and female *S. franciscanus*, known as “uni” in Japanese, are the object of the fishery. The majority

of effort for this fishery is concentrated in southern California with Santa Barbara, Oxnard-Ventura, and Los Angeles ports having the most landings in the region (CDFW 2016). Commercial sea urchin harvesters have been a central part of this project since its inception. Several commercial sea urchin harvesters have retained contracts with The Bay Foundation to cull the excess Purple Sea Urchins (*Strongylocentrotus purpuratus*) from the restoration sites. This collaboration between scientists, project management, and the fishermen has been very productive and efficient. The direct results of the restoration work impact the rocky reef-kelp forest ecosystem and have the ability to increase the value of the reefs for the commercial red sea urchin fishery. The disparate and complimentary expertise of the project partners in this effort has been central to its success. Thus, the project directly increases the ecological structure and function of the rocky reefs off of Palos Verdes while creating a more comprehensive Santa Monica Bay community in restoring the kelp forests off our coast.



Figure 2. Long Point pre-restoration in 2005. **Figure 3.** Long Point post-restoration in 2008.

Restoration Overview Map

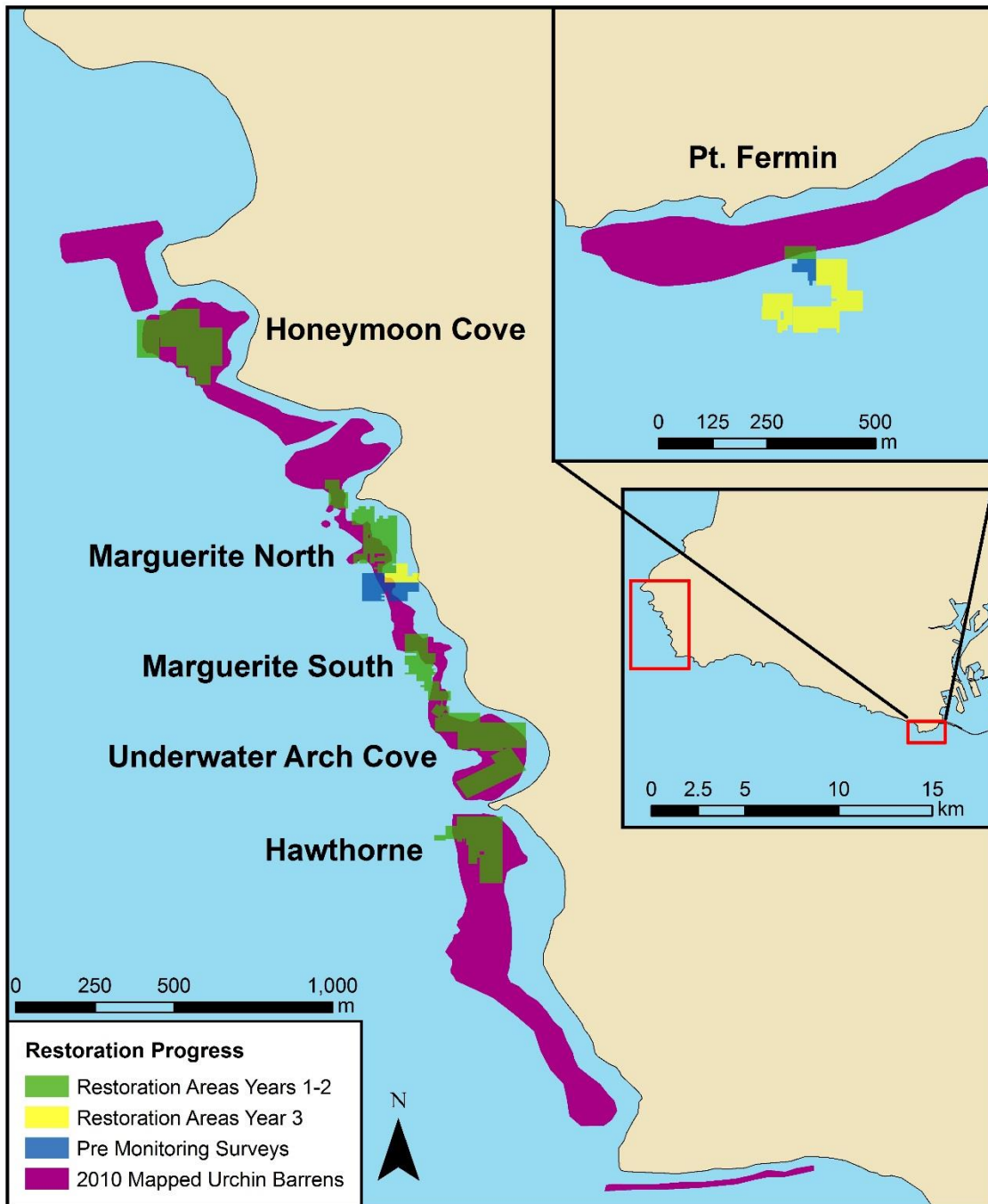


Figure 4. Urchin barrens as mapped in 2010 and areas restored, representing a possible expansion and/or shift of urchin barrens. The locations of restoration areas completed in years 1 and 2 are in green, areas restored in year 3 are yellow, and areas currently in progress are blue.

Methods

Description of Restoration, Control, and Reference Sites

All of the project restoration, reference, and control sites are located off the Palos Verdes Peninsula, Los Angeles County, California. Table 1 below shows all potential restoration sites along with the area in hectares, initially described in 2010 surveys, and representative central GPS coordinate for each.

Table 1. Area and GPS coordinates for restoration, reference and control sites.

| Restoration Site Name | Area (Hectares) | Perimeter (Meters) | Centroid (Decimal Degrees) |
|---|------------------------|---------------------------|-----------------------------------|
| Honeymoon Cove | 4.07 | 1,509 | 33.764, -118.423 |
| Christmas Tree Cove | 4.09 | 2,264 | 33.761, -118.419 |
| Marguerite | 5.19 | 2,522 | 33.757, -118.418 |
| Underwater Arch | 5.36 | 2,183 | 33.752, -118.415 |
| Hawthorne | 8.96 | 1,789 | 33.747, -118.414 |
| Portuguese Point | 1.73 | 1,604 | 33.737, -118.376 |
| Inspiration Point | 2.57 | 1,965 | 33.736, -118.368 |
| Whites Point | 3.38 | 2,395 | 33.713, -118.315 |
| Point Fermin | 4.37 | 3,367 | 33.704, -118.291 |
| <p>The following sites were identified as urchin barrens in 2010 and are located within the Marine Protected Areas surrounding Point Vicente. Thus far these sites have only been monitored and will continue to be monitored as part of the experimental design of the overall project. Three of these sites received restoration work in the past, pre-MPA, (2005-2011) i.e., Kaplan Cove, Long Point and Old Marineland. Restoration work was conducted on a limited basis inside the MPA in the early part of 2012. Furtherance of restoration efforts within the MPAs might yield benefits to the goals of the MPAs generally and specifically to the MPA cluster on the Palos Verdes Peninsula.</p> | | | |
| Site Name | Area (Hectares) | Perimeter (Meters) | Centroid (Decimal Degrees) |
| Point Vicente East | 4.8 | 2,812 | 33.740, -118.406 |
| Kaplan Cove | 2.3 | 1,115 | 33.737, -118.401 |
| Long Point | 0.82 | 1,240 | 33.736, -118.398 |
| Old Marineland | 1.2 | 744 | 33.737, -118.395 |
| 120 Reef | 1.74 | 1,226 | 33.738, -118.392 |
| Abalone Cove Kelp | 9.1 | 3,397 | 33.740, -118.385 |
| Reference Site Name | Area (Hectares) | Perimeter (Meters) | Centroid (Decimal Degrees) |
| Point Vicente West | - | - | 33.740, -118.412 |
| Rocky Point North | - | - | 33.779, -118.426 |
| Control Site Name | | | |
| | | | |

| | | | |
|--------------------|------|-------|------------------|
| Abalone Cove West | 9.10 | 3,397 | 33.740, -118.385 |
| Marguerite Central | 5.19 | 2,522 | 33.757, -118.418 |

Pre-Restoration Monitoring

Restoration sites have been established in 5 sites off Palos Verdes: Honeymoon Cove, Marguerite, Underwater Arch Cove, Hawthorne and Point Fermin. Pre-restoration monitoring is conducted on all sites according to CDFW standards stipulated in the terms of the SCP. Sites are divided into 30 m by 30 m blocks each comprised of 5 transects (2 m by 30 m swath) monitored by divers. Each transect is divided into 10 m long segments to estimate the density of purple urchins, red urchins, giant kelp and a characterization of the substrate. In certain instances these blocks, or the individual transects comprising them are truncated to fit the natural topography. This fine scale and spatially comprehensive methodology allows for greater resolution of inter-block variability and has been beneficial to the adaptive management of restoration teams.

Post-Restoration Monitoring

Post-restoration monitoring is conducted within 1-2 weeks after urchin suppression by the restoration teams. This work is performed by The Bay Foundation staff to ensure that restoration work is achieving performance standards. The standards are 1) the initial reduction of sea urchins to a density of 2 per square meter and 2) that this is being applied in a comprehensive manner sweeping through an area and not leaving patches and pockets of high urchin densities. All restoration areas are surveyed pre and post restoration actions to describe the status of the restoration areas and entered into a georeferenced database. Post-monitoring can be completed more quickly than pre-monitoring as only the density of urchins are counted. All 15 (30 m x 2 m) transects, covering 100% area of the 30 m x 30 m block are surveyed during post-monitoring to ensure that no pockets of high density urchins are left in the site. All restoration sites are re-surveyed, by roaming over the area, on a monthly to quarterly basis to ensure that purple urchin densities remain at two sea urchins per square meter and to observe the response of the biota to the restoration actions.

Response Monitoring (August 2016 through April 2017)

This monitoring focuses on responses of the natural community to restoration activities. The focus of this effort is subtidal utilizing an adapted Cooperative Research and Assessment of Nearshore Ecosystems (CRANE) methodology led by the Vantuna Research Group. These data provide values relating to production, species richness, and biomass. In addition, an adaptation of the Core and Biodiversity protocols used throughout the west coast of North America as part of the MARINE network will be applied to the intertidal and shallow subtidal areas addressed in the scope of work (led by the Vantuna Research Group). This method identifies trends in sessile and motile organisms and coverage in the intertidal zone. Lastly, the application of a gonadosomatic index generated in 2011 for *Strongylocentrotus franciscanus* and *Strongylocentrotus purpuratus* specific to the Palos Verdes Peninsula is be applied to gather data on secondary production values for these species that play a pivotal role in the

ecology of the kelp forests and support one of California's largest nearshore fisheries. Urchins were collected and dissected for this report in fall 2015.

Community Analyses

As part of the quantitative characterization of the community structure of the reefs, we examined patterns in the overall kelp forest community using UPC (percent cover) data as well as the fish and swath (benthic macroinvertebrates and kelps) data combined. Density metrics were square root transformed (fish and swath data), while percent-cover metrics (UPC benthic cover data) were arcsine square root transformed. Two-dimensional, non-metric multidimensional scaling (nMDS) was used to examine patterns among kelp forest communities.

Table 2. Response monitoring (CRANE) metadata. See Appendix B for all CRANE data tables.

| CRANE Survey Date | | | | | | | |
|-------------------------|------------|------------|-----------|-----------|-----------|-------------|-------------|
| Site | 2011 | 2012 | 2013 | 2014 | 2015 | Spring 2016 | Summer 2016 |
| Abalone Cove Kelp West | 5/27/2011 | 6/22/2012 | 6/21/2013 | 7/25/2014 | 9/2/2015 | 2/10/2016 | 6/29/2016 |
| Marguerite Central | 5/3/2011 | 6/8/2012 | 7/3/2013 | 6/20/2014 | 9/23/2015 | 2/10/2016 | 7/26/2016 |
| Golden Cove | 2/7/2011 | 6/12/2012 | 6/12/2013 | 7/11/2014 | 9/23/2015 | 2/10/2016 | 6/22/2016 |
| Honeymoon Cove | 1/28/2011 | 3/13/2012 | 5/31/2013 | 7/2/2014 | 8/19/2015 | 2/10/2016 | 6/22/2016 |
| Point Vicente West | 10/12/2011 | 8/10/2012 | 4/24/2013 | 4/18/2014 | 9/23/2015 | 2/10/2016 | 6/22/2016 |
| Rocky Point North | 6/24/2011 | 6/29/2012 | 7/2/2013 | 7/11/2014 | 9/25/2015 | 2/10/2016 | 6/10/2016 |
| Bottom Temperature (°C) | | | | | | | |
| Site | 2011 | 2012 | 2013 | 2014 | 2015 | 2016 | 2016 |
| Abalone Cove Kelp West | 16 | 13 | 18 | 17 | 20 | 14 | 14 |
| Marguerite Central | 15 | 17 | 17 | 20 | 22 | 14 | 14 |
| Golden Cove | 15 | 19 | 15 | 15 | 22 | 14 | 14 |
| Honeymoon Cove | 15 | 12 | 18 | 16 | 21 | 14 | 14 |
| Point Vicente West | 11 | 19 | 15 | 14 | 21 | 14 | 14 |
| Rocky Point North | 18 | 15 | 18 | 21 | 21 | 15 | 15 |
| Coordinates | | | | | | | |
| Site | Latitude | Longitude | | | | | |
| Abalone Cove Kelp West | 33.73942 | -118.38828 | | | | | |
| Marguerite Central | 33.75694 | -118.41772 | | | | | |
| Golden Cove | 33.75300 | -118.41507 | | | | | |
| Honeymoon Cove | 33.76490 | -118.42339 | | | | | |
| Point Vicente West | 33.74093 | -118.41257 | | | | | |
| Rocky Point North | 33.77942 | -118.42731 | | | | | |

Timeline and Effort of Restoration

Restoration and monitoring activities have been conducted in restoration, control and reference sites since July 2013. Urchin suppression efforts have expanded each year to encompass two coves (Underwater Arch and Honeymoon), and two open shore areas (Marguerite and Hawthorne). These areas are located somewhat centrally on the Palos Verdes Peninsula. These sites are nearly contiguous and share similarities in ocean exposure. An additional site, Point Fermin, was started to the south and east of these other locales. In fact, Point Fermin is roughly the south east terminus of the Palos Verdes Peninsula. Further south and east of Point Fermin is Cabrillo outer beach and the break wall for the Ports of Los Angeles and Long Beach. The progression of restoration activities by expanse restored by area and by year is contained

in Table 3. Table 4 provides values for the hours of effort spent SCUBA diving by the project to achieve these results.

All of the field work involved in this project is subject to sea state, oceanic climate and weather. Remaining work in all of the sites listed in Table 3 is projected for this coming operational year, July 1, 2016 through June 30, 2017, listed in Table 5. Much of the area yet to be monitored and restored can be very challenging i.e., comprised of high relief and/or shallow subtidal habitat. The windows for safe and effective operations in these areas are few in a typical year in southern California. The atypical El Nino conditions that persisted throughout 2015-2016 provided few opportunities for restoration or monitoring activities to be conducted safely and with appropriate accuracy, resultantly restoration effort and concordant monitoring progress was slowed during this report period. With the relaxation of El Nino the winter of 2016-2017 and a return to more normal environmental conditions the pace of our work should increase.

Table 3. Total effort diving towards project goals July 1, 2013 through June 30, 2016.

| Effort (dive hours) | Monitoring | Restoration |
|----------------------------------|------------|-------------|
| The Bay Foundation | 874.40 | 71.93 |
| LA Waterkeeper | 133.37 | 1030.86 |
| Commercial Sea Urchin Harvesters | - | 4225.78 |
| Total Dive Hours | 1007.77 | 5328.57 |

Table 4. Restoration areas targeted for July 1, 2016 through June 30, 2017. During this reporting period, Honeymoon Cove and Underwater Arch Cove are considered complete- e.g. the barrens that dominated these coves have been systematically and comprehensively treated by urchin suppression and concordant monitoring. Ongoing periodic monitoring of these sites will continue to ensure that purple urchin densities remain at no more than two per square meter. Areas at the margins or in neighboring areas further offshore and in shallow subtidal - intertidal will be surveyed to determine if urchin barrens are emerging. Periodic SCUBA and shore-based surveys will continue to determine that urchin densities remain at target values for the coming years.

| Site Name | Total Area Acres | Start Date | Area Cleared (Acres) | Status | Centroid |
|----------------------|-------------------------|-------------------|-----------------------------|---------------|------------------|
| Honeymoon Cove | 10.05 | October-14 | 8.33 | Complete | 33.764, -118.423 |
| Underwater Arch Cove | 13.24 | July-14 | 8.37 | Complete | 33.752, -118.415 |
| Marguerite | 12.82 | August-14 | 8.79 | In Progress | 33.757, -118.418 |
| Hawthorne | 22.14 | January-15 | 4.29 | In Progress | 33.747, -118.414 |
| Point Fermin | 10.80 | July-15 | 3.93 | In Progress | 33.704, -118.291 |
| Whites Point | 8.35 | Fall -2016 | | | 33.713, -118.315 |
| Total | 77.4 | | 33.71 | | |

Table 5. Restoration and monitoring timeline July 2016-June 2017

| TASK | 2016 | | | | | 2017 | | | | | | | |
|------------------------|--------------|--------------|--------------|-----|-----|------|-----|--------------|-----|-----|-----|--------------|--|
| | July | Aug | Sept | Oct | Nov | Dec | Jan | Feb | Mar | Apr | May | June | |
| Urchin Suppression | | [Purple bar] | | | | | | | | | | | |
| Post Monitoring | [Yellow bar] | | | | | | | | | | | | |
| Response Monitoring | | [Blue bar] | | | | | | | | | | | |
| Analysis and Reporting | | | [Orange bar] | | | | | [Orange bar] | | | | [Orange bar] | |

All data collected (i.e., date, area, team members, level of effort, density of urchins pre and post restoration, giant kelp density and size characterization, and substrate) are entered, QAQC'd and managed utilizing a georeferenced database.

Results

Urchin Densities Pre and Post Restoration

During 2016, monitoring and restoration activities occurred in 3 sites; Marguerite North, Hawthorne, and Point Fermin (Figures 5 through 7 respectively). The following maps display the estimated purple urchin densities before restoration activities [within each 10 m segment]. Density data from previous years are transparent and gray areas represent blocks currently in progress and will be cleared in project year 4. Figures 8 through 10 display the estimated purple urchin densities after urchin suppression and restoration within each 10m segment for Marguerite, Hawthorne and Point Fermin. Urchin density maps for all sites are included in Appendix A.

Table 6. Restoration Progress by site years 1 through 3.

| Site Name | Area Cleared (Acres) | Area Cleared (Acres) | Area Cleared (Acres) | Total Area (acres) |
|----------------------|---------------------------------|---------------------------------|---------------------------------|--------------------|
| | Year 1 July 2013 - June 2014 | Year 2 July 2014 - June 2015 | Year 3 July 2015 - June 2016 | |
| Honeymoon Cove | 6.77 | 1.56 | 0 | 8.33 |
| Underwater Arch Cove | 5.91 | 2.46 | 0 | 8.37 |
| Marguerite | 0.00 | 6.75 | 2.04 | 8.79 |
| Hawthorne | 0.00 | 4.29 | 0 | 4.29 |
| Point Fermin | 0.00 | 0.00 | 3.93 | 3.93 |
| Total Area | 12.68 | 15.06 | 5.97 | 33.71 |

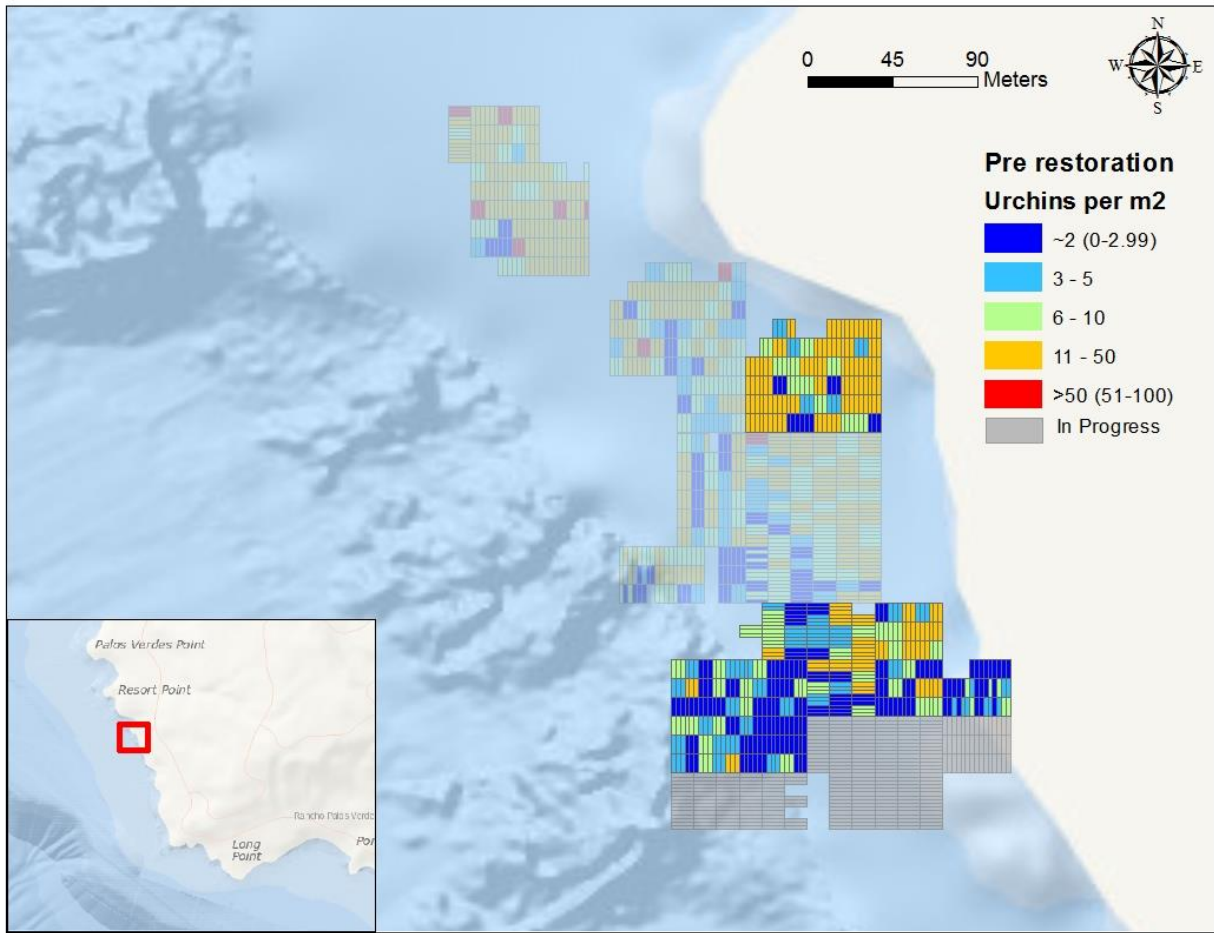


Figure 5. Density of *S. purpuratus* (individuals per square meter) pre-restoration in Marguerite (north), Palos Verdes, California. The transparent blocks represent density data for previous years and gray blocks are currently in progress. See Appendix A for larger map images.

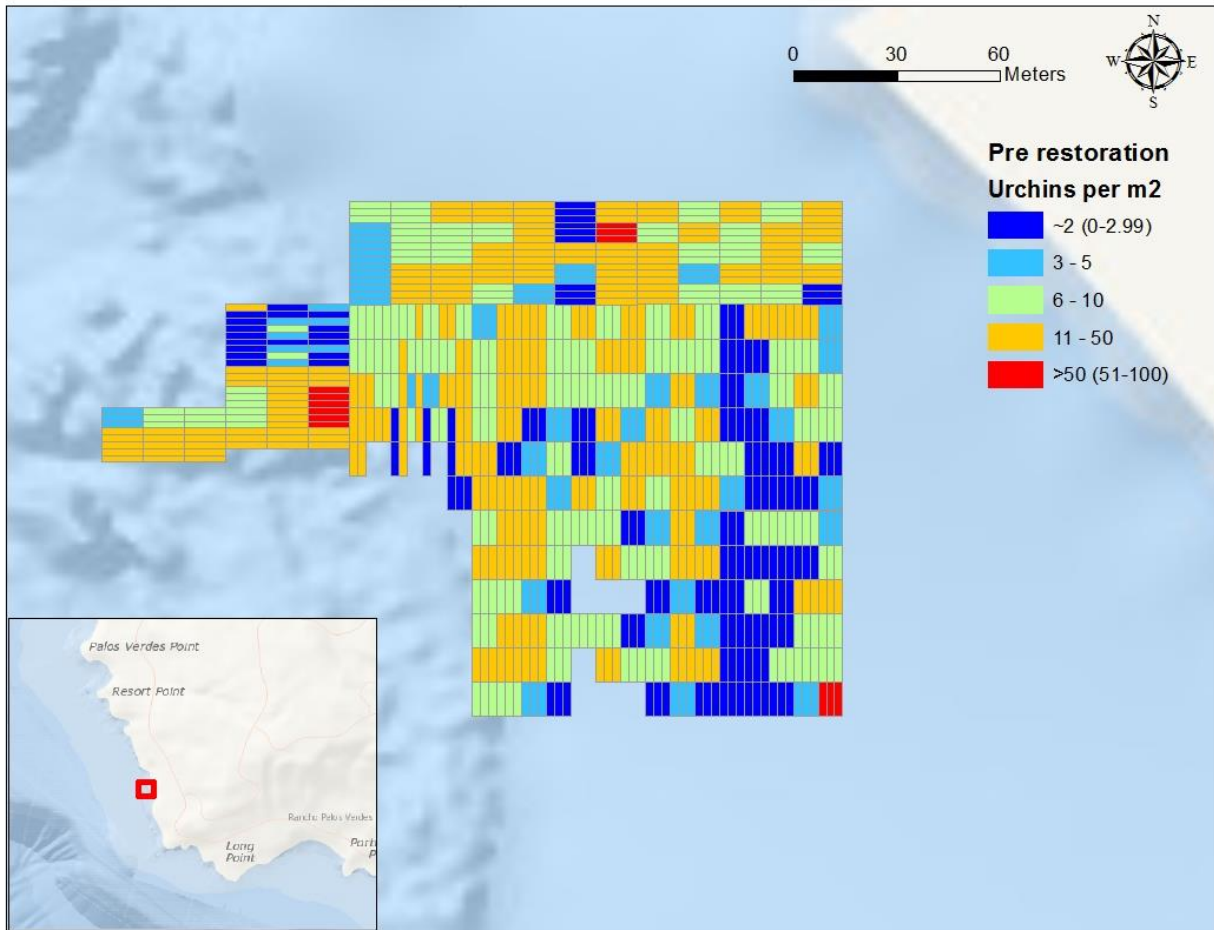


Figure 6. Density of *S. purpuratus* (individuals per square meter) pre-restoration in Hawthorne, Palos Verdes, California. All pre density data in this site was collected during project year 2. Post monitoring was not completed for 7 of the restoration blocks due to visibility and ocean conditions. Conditions improved this year, allowing divers to complete compliance monitoring. The results of this monitoring are displayed in Figure 8 below. See Appendix A for larger map images.

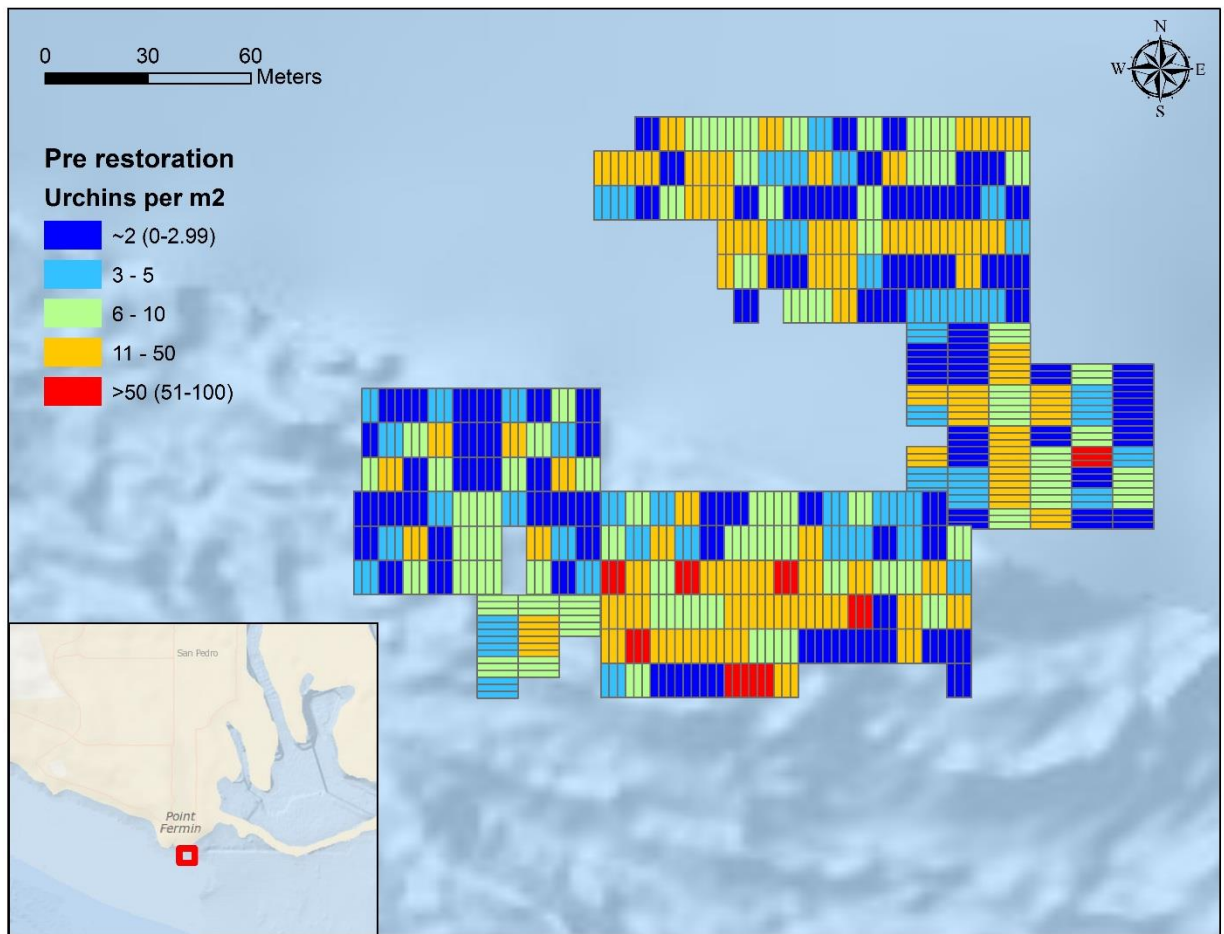


Figure 7. Density of *S. purpuratus* (individuals per square meter) pre-restoration in Point Fermin, Palos Verdes, California. See Appendix A for larger map images.

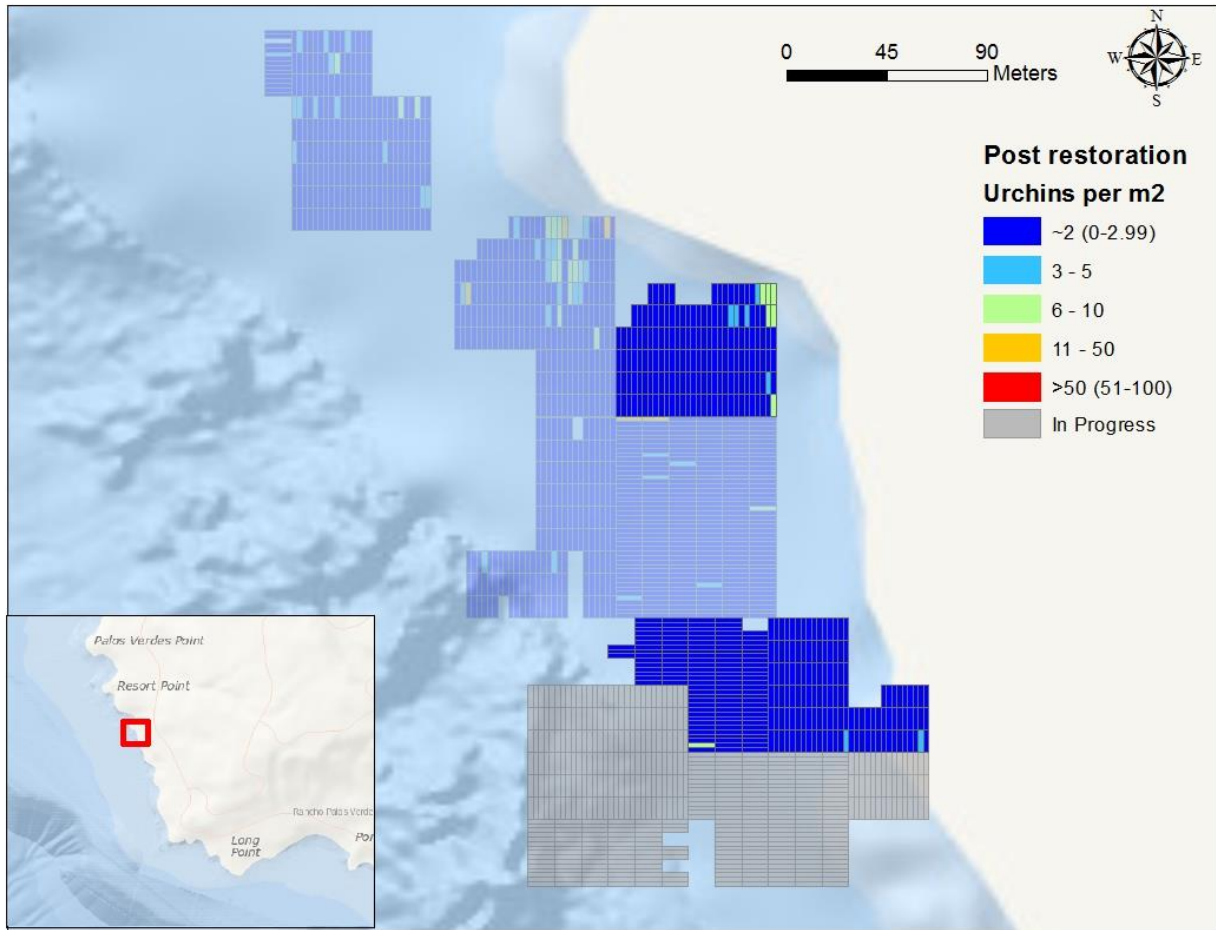


Figure 8. Density of *S. purpuratus* (individuals per square meter) post-restoration in Marguerite (north), Palos Verdes, California. The transparent blocks represent density data for previous years and gray blocks are currently in progress. See Appendix A for larger map images.

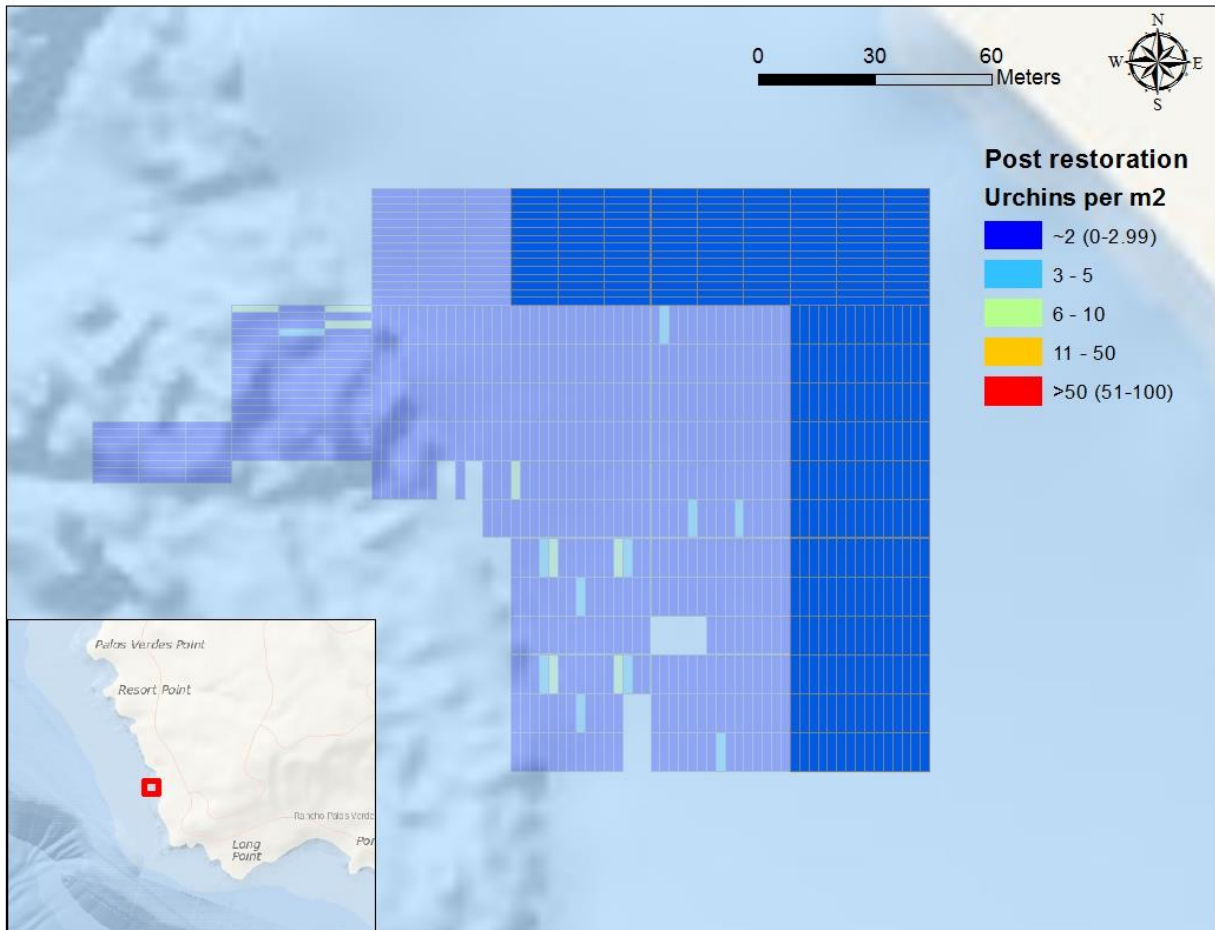


Figure 9. Density of *S. purpuratus* (individuals per square meter) post-restoration in Hawthorne, Palos Verdes, California. The transparent blocks represent density data for previous years. Post monitoring was not completed for 7 restoration blocks due to visibility and ocean conditions. Conditions improved this year, allowing divers to complete compliance monitoring. The results of this monitoring are displayed above (dark blue). See Appendix A for larger map images.

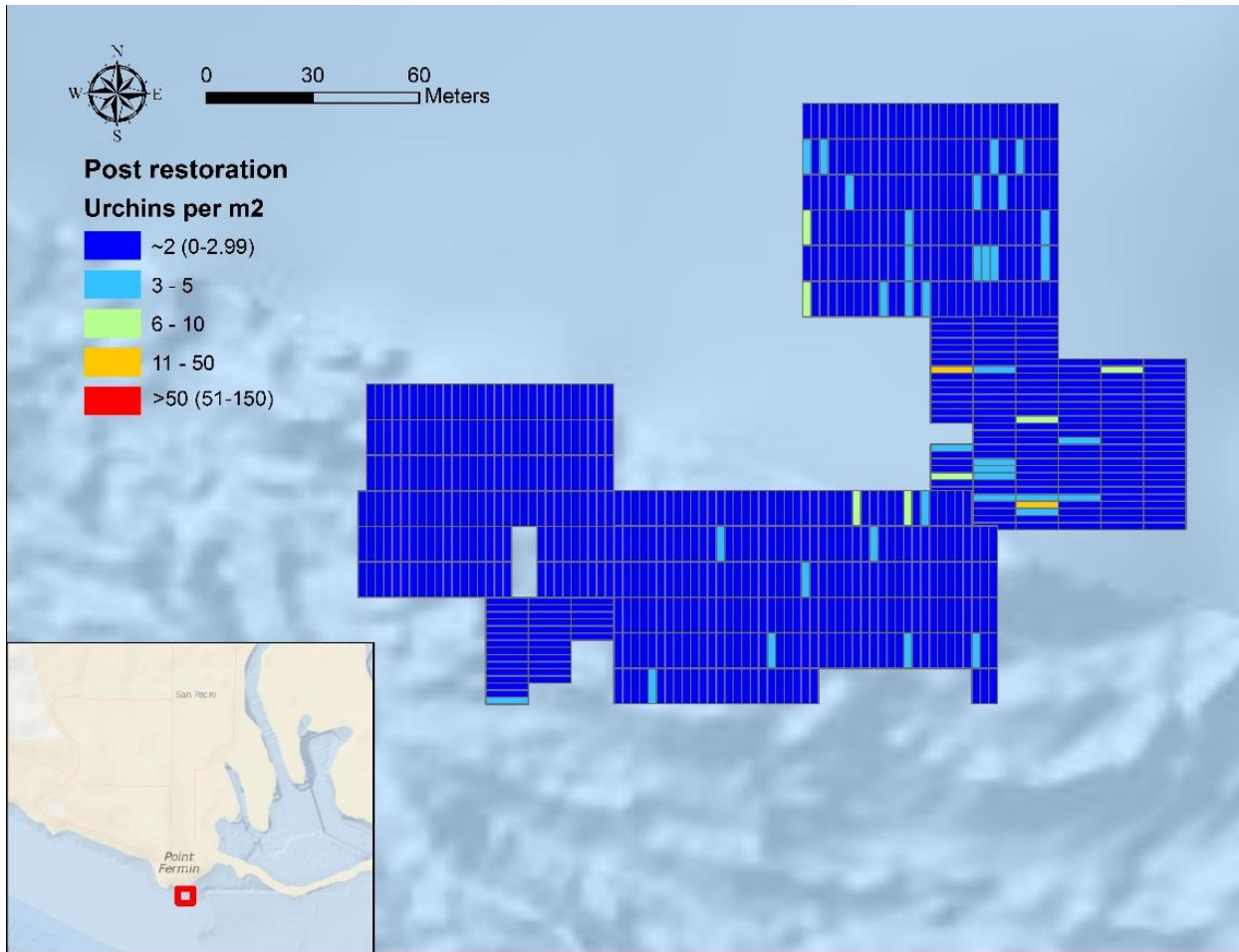


Figure 10. Density of *S. purpuratus* (individuals per square meter) post-restoration in Point Fermin, Palos Verdes, California. See Appendix A for larger map images.

An estimated 3,248,619 purple urchins have been suppressed reducing the overall average density for the restoration sites off Palos Verdes from 25.22/m² to 1.41/m². Purple urchin density in some sites are less than the target density of 2/m². These low values may in part be attributed to the predominance of poor visibility this reporting period. Transects monitored during better conditions were found to be closer to 2/m². Additionally, the first observations of wasting sea urchins were reported in January of 2015 in isolated locations along the peninsula. The wider spread occurrence of wasting urchins has been observed in nearly all sites off of Palos Verdes. This event may be significant and will be monitored closely by dive teams (J. Williams Pers. Comm. 10-23-15). Table 7 below shows the estimated number of urchins removed and density values by year.

Table 7. Estimated quantity of purple urchins (*S. purpuratus*) removed and urchin density (individuals per square meter) pre and post restoration (July 1, 2013 – June 30, 2016).

| Time Period July 1- June 30 | Area Acres | Pre Purple Urchin Density/m² | Post Purple Urchin Density/m² | Urchins Removed |
|--|-----------------------|--|---|----------------------------|
| Year 1 | 12.68 | 40.60 | 1.81 | 1,990,173 |
| Year 2 | 15.06 | 17.98 | 1.18 | 1,023,807 |
| Year 3 | 5.97 | 10.81 | 1.10 | 234,639 |
| Total as of 6/30/16 | 33.71 | 25.22 | 1.41 | 3,248,619 |

Gonadosomatic Indices of Red and Purple Urchins

A total of 273 *S. franciscanus* and 91 *S. purpuratus* were collected for gonadosomatic study over 2 sampling dates in the Fall 2015 (October 22 and November 18). For each date, urchins were collected from 1 existing kelp site, 1 barren site and 2 restoration sites to compare gonad indices between site types.

Table 8. Urchin collections for 2015 dissections.

| Collection Date | 10/22/2015 | | 11/18/2015 | |
|------------------------|-------------------|---------|-------------------|---------|
| | Reds | Purples | Reds | Purples |
| Site Type | | | | |
| Barren | 6 | 42 | 8 | 40 |
| Kelp | 13 | 40 | 6 | 39 |
| Restoration 1 | 10 | 35 | 5 | 39 |
| Restoration 2 | 43 | 38 | 0 | 0 |

The measurement of gonad development in sea urchins is an important measure of secondary production in the giant kelp forest ecosystem, and will be used to inform adaptive management of the restoration project and inform research related to giant kelp forests and associated fisheries.

Strongylocentrotus franciscanus

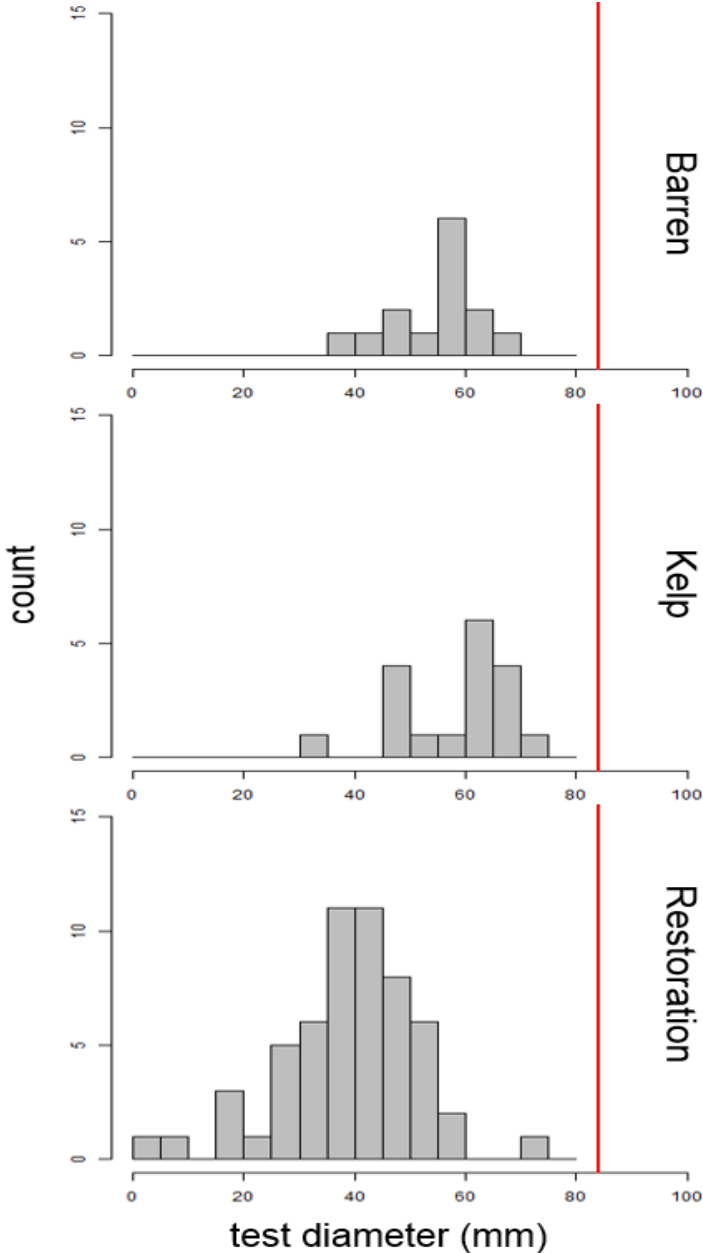


Figure 11. Histogram of Red Urchin (*Strongylocentrotus franciscanus*) test diameter for urchins collected in Barren, Kelp Forest Reference and Restoration Sites with data from collections during Fall 2015 (22 Oct and 18 Nov). The red line indicates the minimum size limit (84 mm) for the red urchin fishery.

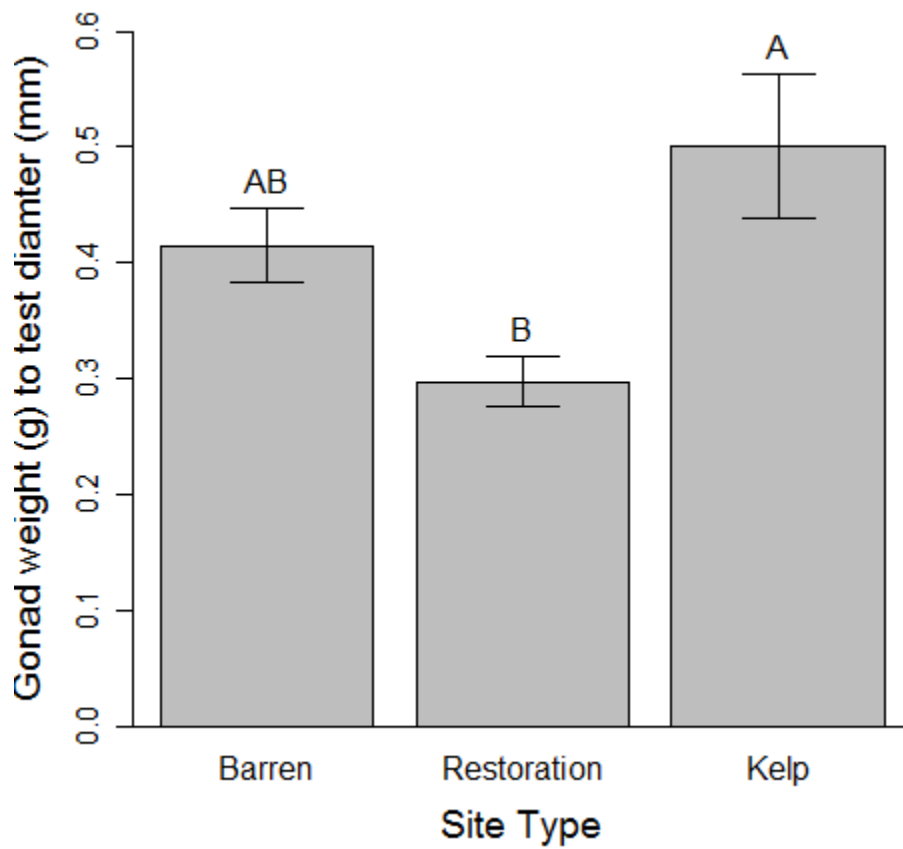


Figure 12. Ratio of gonad weight (g) to test diameter (mm) for the Red Urchin (*Strongylocentrotus franciscanus*) from collections during Fall 2015 (22 Oct and 18 Nov). Gonad weight significantly heavier at the Kelp reference site compared to the restoration site (ANOVA _{2,85}, $F=9.27$, $p < 0.001$)

Strongylocentrotus purpuratus

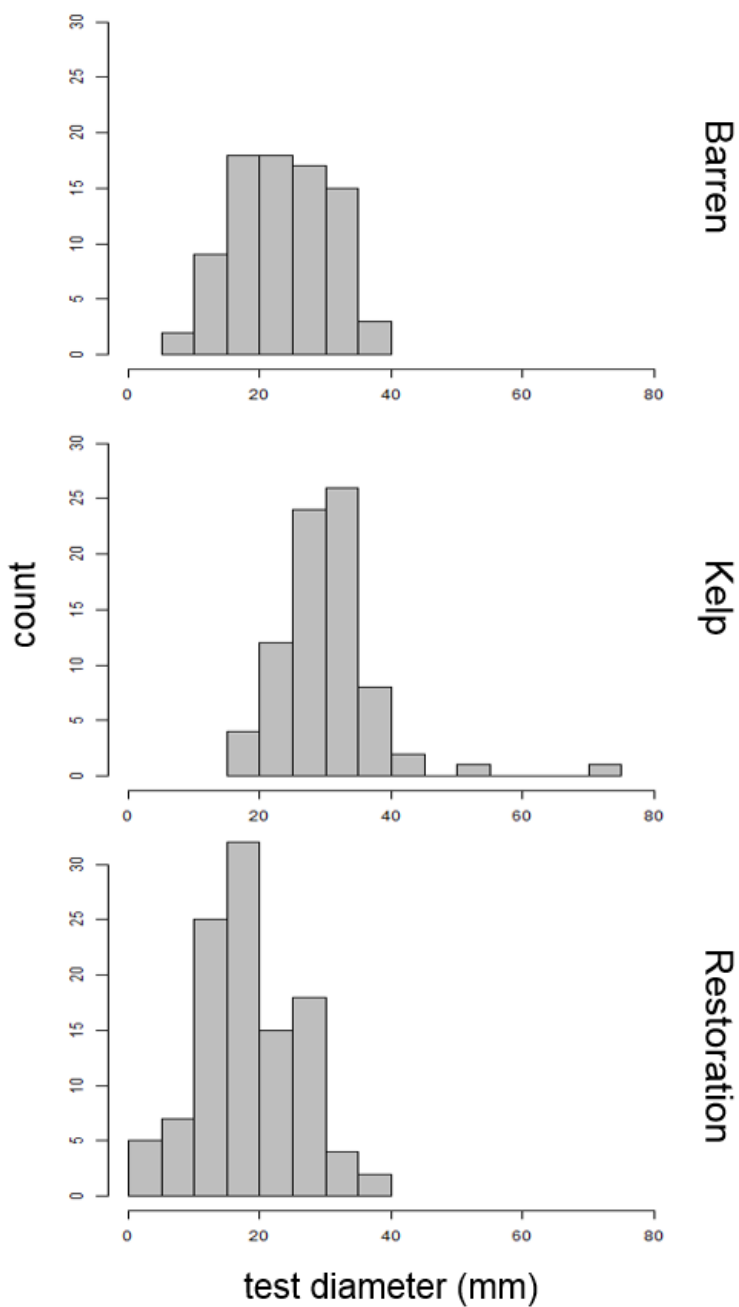


Figure 13. Histogram of Purple Urchin (*Strongylocentrotus purpuratus*) test diameter for urchins collected in Barren, Kelp Forest Reference and Restoration Sites pooling data from collections during Fall 2015 (22 Oct and 18 Nov). There was a significant difference among urchins collected in the three habitat types (one-way ANOVA: $p < 0.001$; mean \pm SE: Barren 35 ± 1 mm, Kelp 51 ± 1 mm, Restoration 42 ± 1 mm).

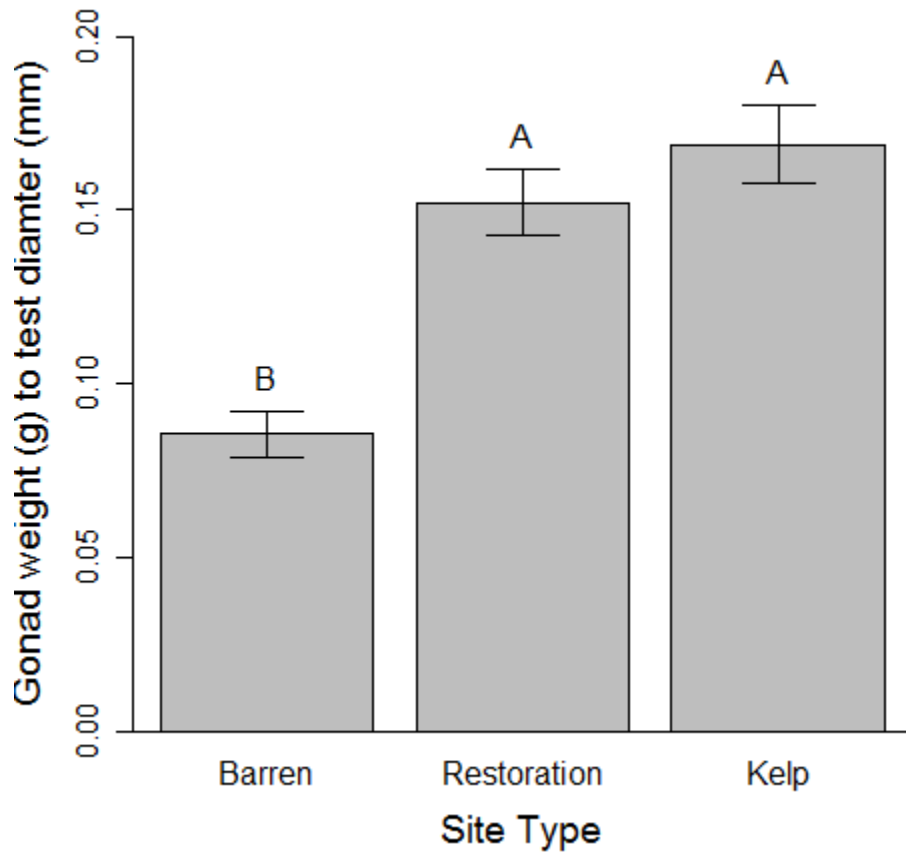


Figure 14. Ratio of gonad weight (g) to test diameter (mm) for the Purple Urchin (*Strongylocentrotus purpuratus*) from collections during Fall 2015 (22 Oct and 18 Nov). Gonad weight significantly heavier at the Kelp reference and restoration site compared to the Barren site (ANOVA $_{2,265}$, $F=19.98$, $p < 0.001$)

Purple and Red Urchin Densities by Site

Strongylocentrotus purpuratus

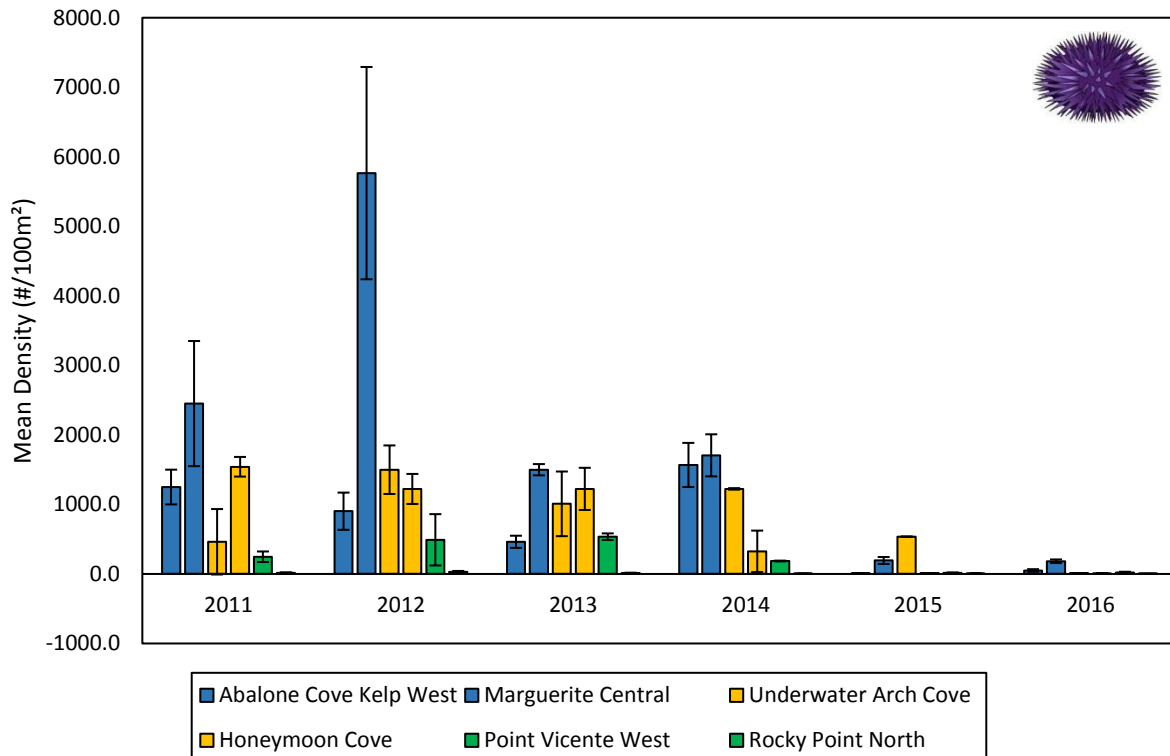


Figure 15. *Strongylocentrotus purpuratus* density (individuals/100 m²). The table below contains the summary data used to generate this figure. Barren Control sites are shown in blue (Abalone Cove West & Marguerite Central), Restoration sites are shown in gold (Underwater Arch Cove & Honeymoon Cove), and Kelp Reference sites are shown in green (Point Vicente West & Rocky Point North).

Strongylocentrotus franciscanus

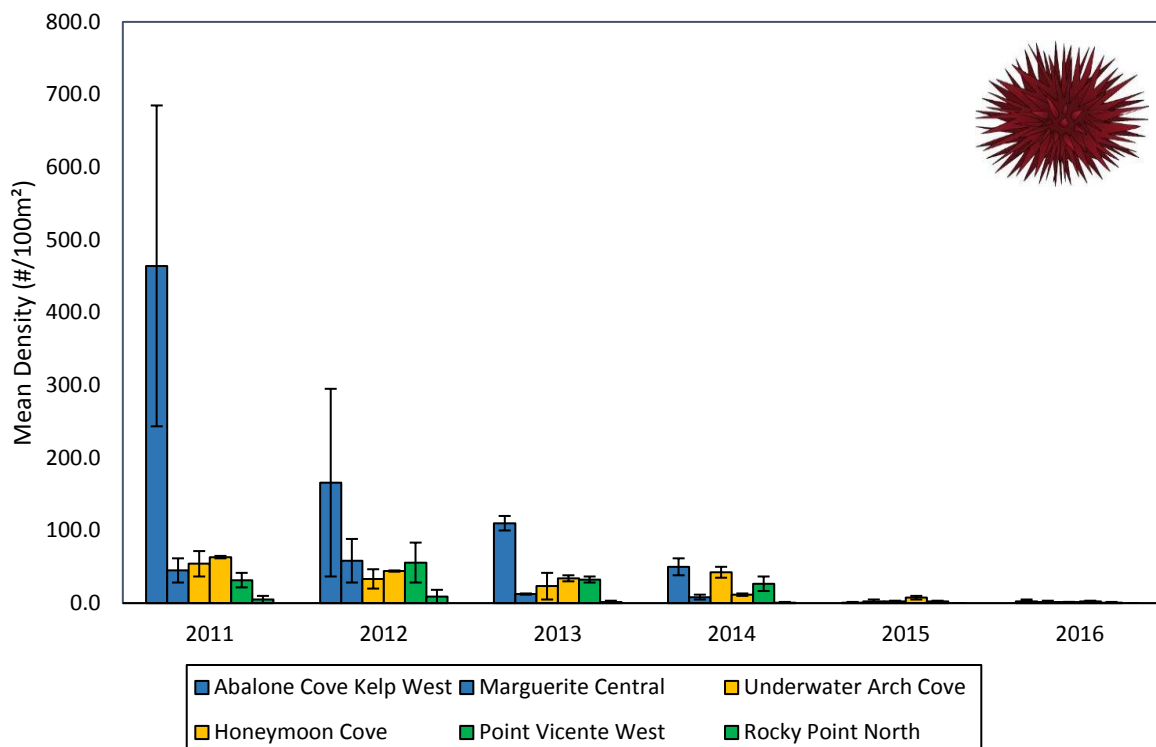


Figure 16. *Strongylocentrotus franciscanus* density (individuals/100 m²). The table below contains the summary data used to generate this figure. Barren Control sites are shown in blue (Abalone Cove West & Marguerite Central), Restoration sites are shown in gold (Underwater Arch Cove & Honeymoon Cove), and Kelp Reference sites are shown in green (Point Vicente West & Rocky Point North).

Kelp Canopy Area and Percent Cover by Site

Since 2003, MBC Applied Environmental has been hired by the Central Region and Region Nine Kelp Survey Consortium to take quarterly aerial surveys of the mainland Southern Californian kelp forests. These kelp surveys inform the consortiums about the status of the kelp forests and serve to determine possible impacts that dischargers and environmental variables are having on the kelp beds. These surveys consist of digital color and infrared color photos taken of the kelp beds that are then processed into base maps. These surveys cover approximately 355 km of the southern Californian coastline.

The consortiums provided TBF with the base maps of annual kelp bed maximums of the Palos Verdes kelp beds, which can be used to show the progress of restoration off Palos Verdes. Surveys from 2007 through 2015 show an overall increase in kelp canopy acreage off the peninsula; however, kelp canopy encroachment into restoration areas is found only to start in 2014 and further increases in 2015 (Figure 17). Focusing on kelp restoration areas where urchin suppression had occurred, canopy percent cover (Figure 18) and area of the site (Figure 19) increased in the completed restoration sites of Honeymoon Cove and Underwater Arch Cove. Canopy cover percentage as of 2015 has reached 52% for Underwater Arch and 83% for Honeymoon Cove, which is an approximate 250% increase for both sites from the previous kelp bed maximum in 2010 (Figure 18).

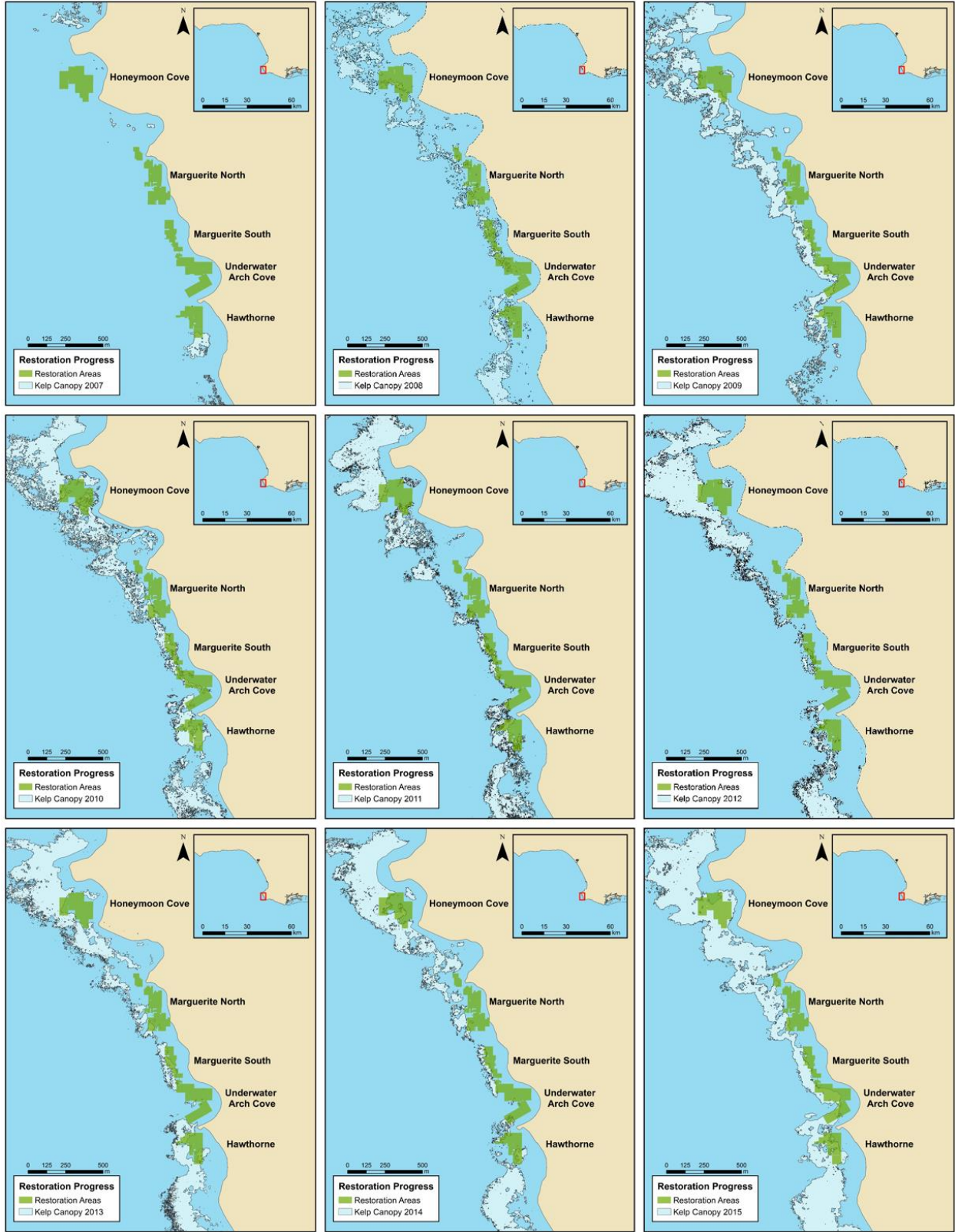


Figure 17. Aerial kelp canopy coverage (*Macrocystis pyrifera*) from 2007 – 2015. Data provided by MBC Applied Environmental. Canopy coverage is represented in light blue while restoration areas are in green. The map shows the western side of the Palos Verdes Peninsula.

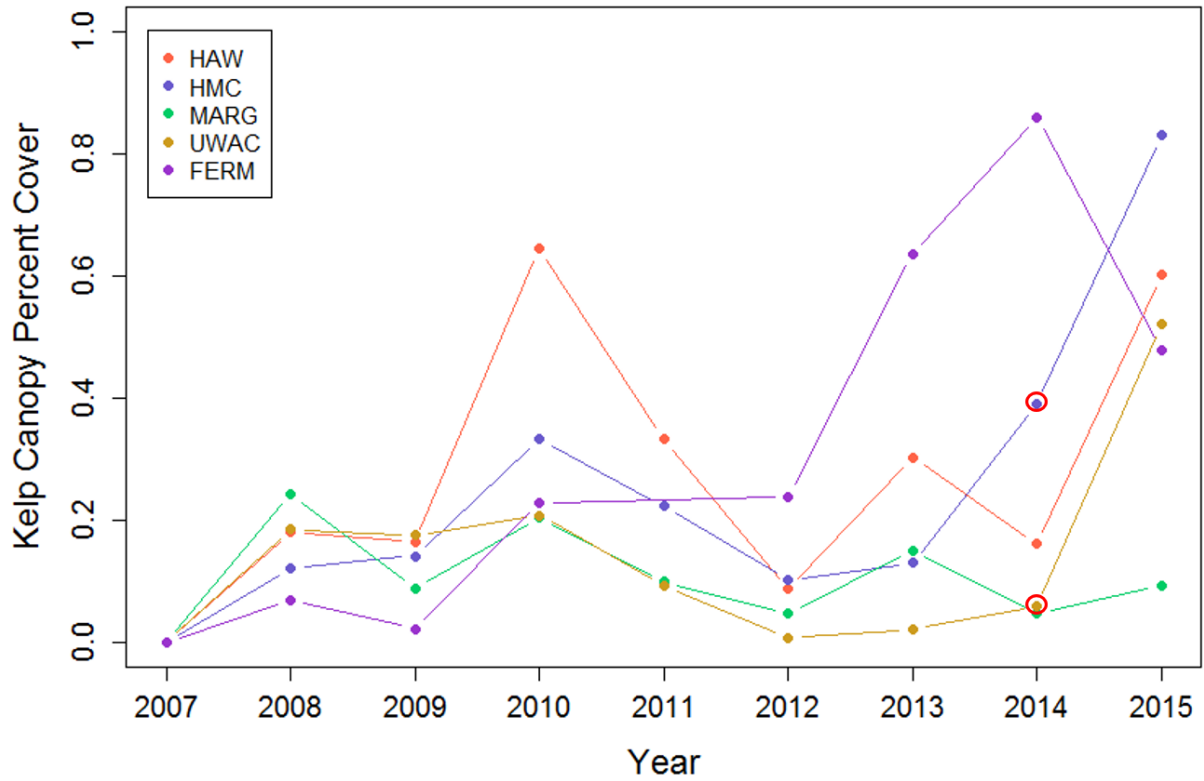


Figure 18. Annual kelp canopy percent cover from 2007 – 2015 per restoration site. Red circles indicate completed restoration sites Underwater Arch (brown) and Honeymoon Cove (blue) a year after restoration finished. Data provided by MBC Applied Environmental. At Hawthorne (HAW - orange) restoration actions have been initiated but not completed during the timeframe of these data. Monitoring and restoration efforts are expected to continue for Hawthorne.

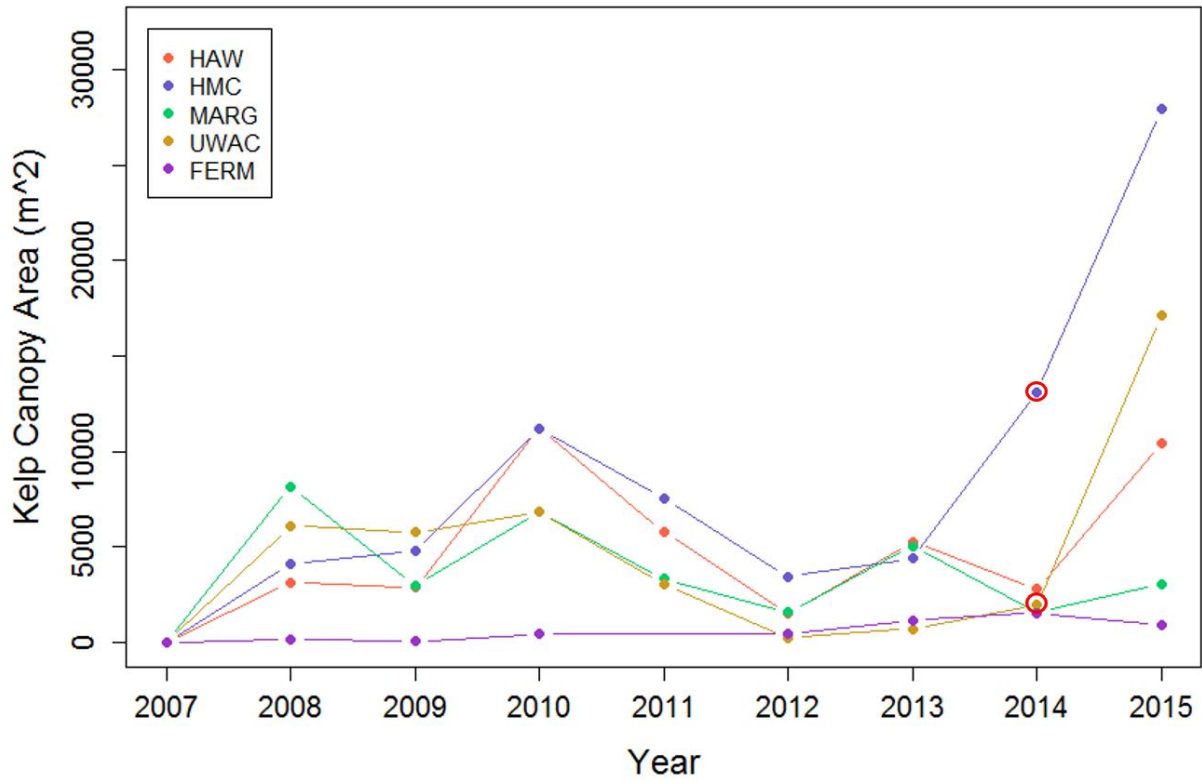


Figure 19. Annual total kelp canopy area from 2007 – 2015. Red circles indicate completed restoration sites Underwater Arch (brown) and Honeymoon Cove (blue) a year after restoration finished. Data provided by MBC Applied Environmental. At Hawthorne (HAW - orange) restoration actions have been initiated but not completed during the timeframe of these data. Monitoring and restoration efforts are expected to continue for Hawthorne.

Giant Kelp Density by Site

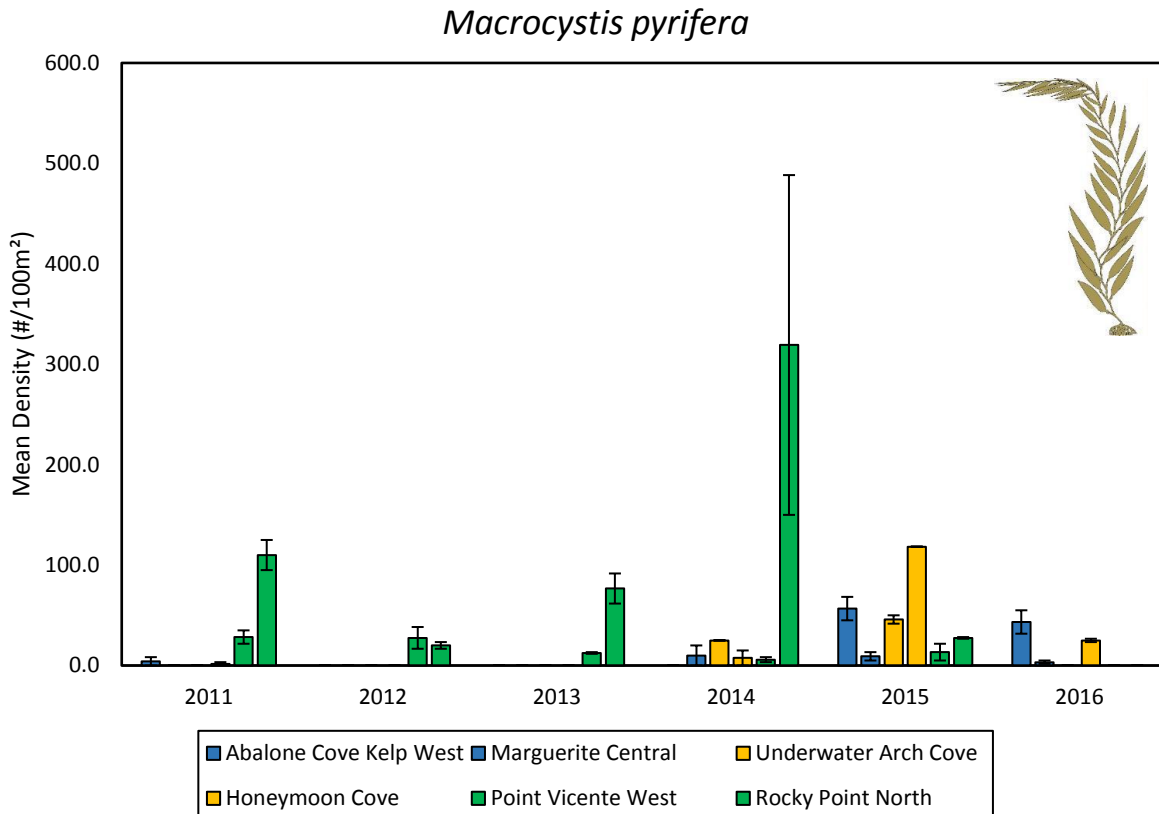


Figure 20. *Macrocystis pyrifera* density (individuals/100 m²). Table below is the summary of the data used to generate this figure. Barren Control sites are shown in blue (Abalone Cove West & Marguerite Central), Restoration sites are shown in gold (Underwater Arch & Honeymoon Cove), and Reference sites (Point Vicente West & Rocky Point North) are shown in green.

Density of Kelp Bass and California Sheephead

Because sites were sampled over a time period of several months and seasons, young-of-the-year (YOY) were removed prior to fish density calculations because they could numerically dominate the assemblage at some sites sampled early during the sampling season but decline later in the year as a result of natural mortality. YOY were generally defined as fishes < 10 cm, except for some smaller species, where they were defined as individuals less than between 1.5 and 5 cm based on published species-specific growth rates and expert opinion. Total length (TL) estimates were converted to biomass using standard species-specific length-weight conversions from the literature. YOY were not excluded from biomass calculations, as their small size will influence biomass estimation less than abundance estimation. Density/biomass density was then summed across all three portions (bottom, midwater and canopy) of each transect, except for when the water depth is less than 6 m, meaning that the volumes of the canopy and midwater portions would overlap, in which case no midwater portion was included. Density values were then scaled to the number per 100m².

Paralabrax clathratus

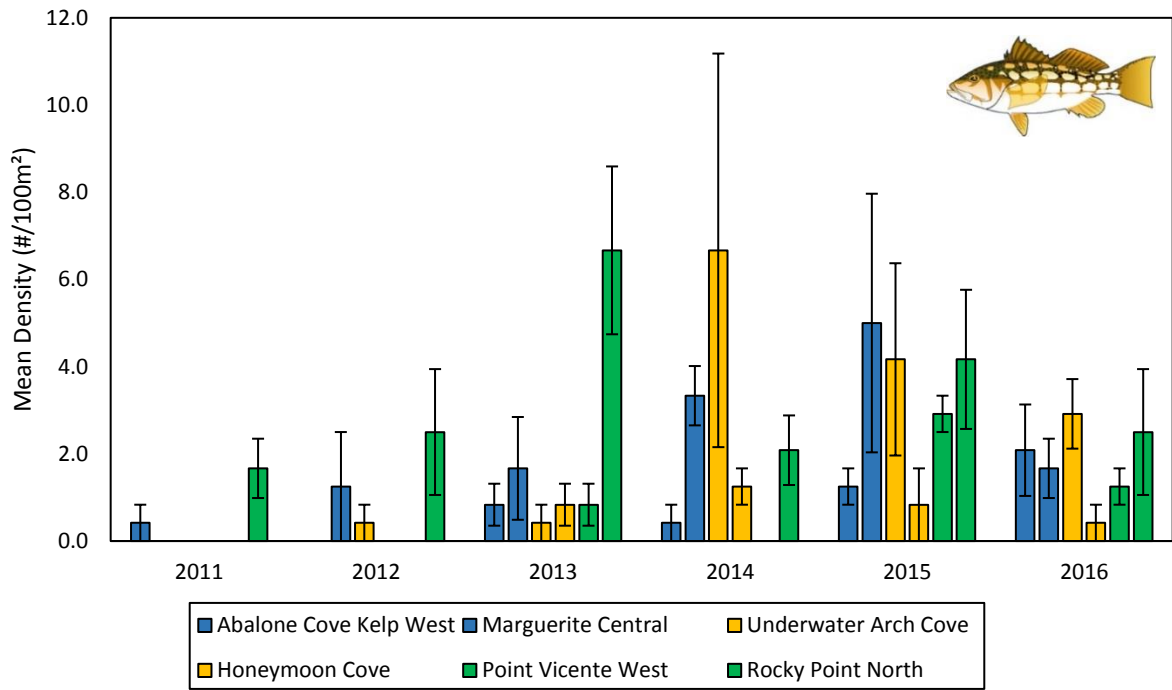


Figure 21. Density of *P. clathratus* by site type; control, restoration, and reference. Barren Control sites are shown in blue (Abalone Cove West & Marguerite Central), Restoration sites are shown in gold (Underwater Arch Cove & Honeymoon Cove), and Kelp Reference sites are shown in green (Point Vicente West & Rocky Point North).

Semicossyphus pulcher

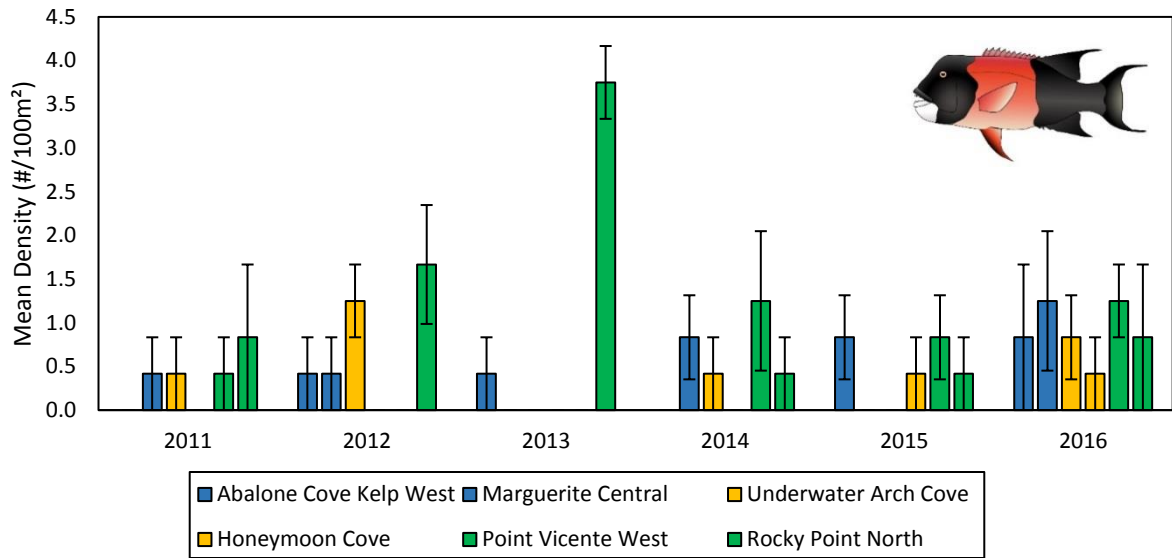


Figure 22. Density of *S. pulcher* by site type; control, restoration, and reference. Barren Control sites are shown in blue (Abalone Cove West & Marguerite Central), Restoration sites are shown in gold (Underwater Arch Cove & Honeymoon Cove), and Kelp Reference sites are shown in green (Point Vicente West & Rocky Point North).

Biomass of Kelp Bass and California Sheephead

Paralabrax clathratus

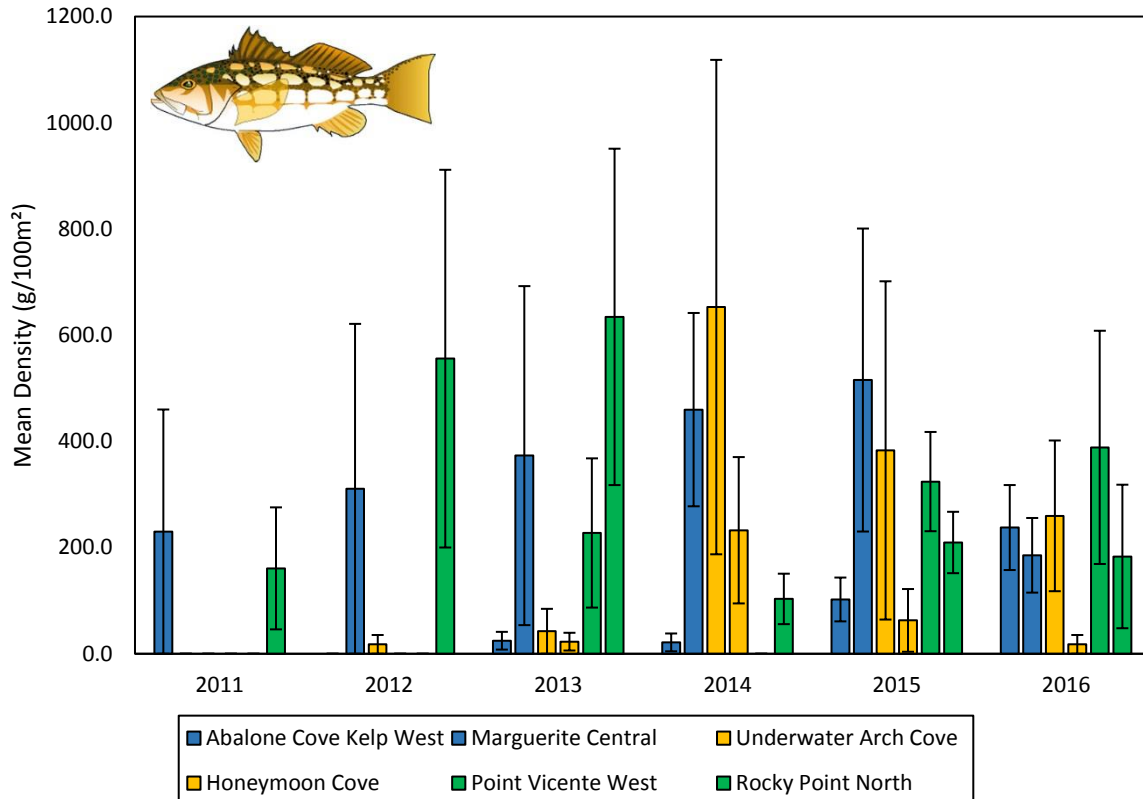


Figure 23. Biomass of kelp bass, *P. clathratus*, per 100 m². Barren Control sites are shown in blue (Abalone Cove West & Marguerite Central), Restoration sites are shown in gold (Underwater Arch Cove & Honeymoon Cove), and Kelp Reference sites are shown in green (Point Vicente West & Rocky Point North).

Semicossyphus pulcher

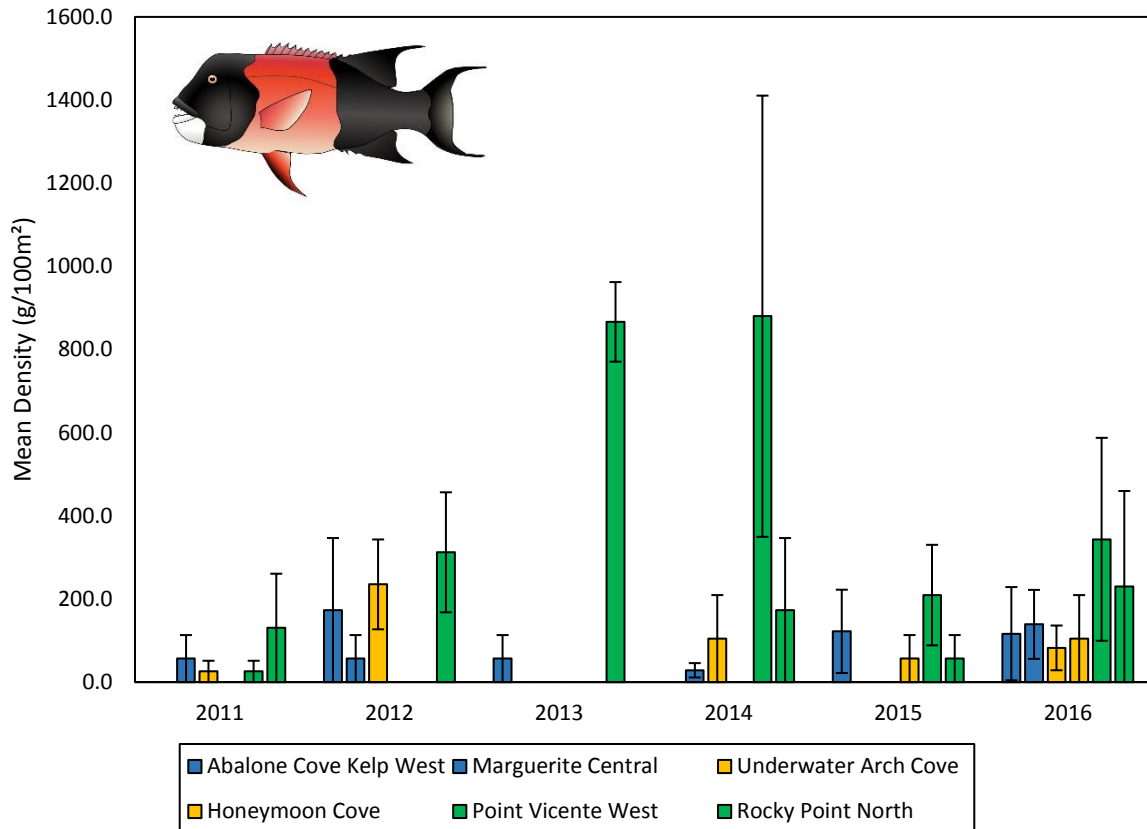


Figure 24. Biomass of sheephead, *S. pulcher*, per 100 m². Barren Control sites are shown in blue (Abalone Cove West & Marguerite Central), Restoration sites are shown in gold (Underwater Arch Cove & Honeymoon Cove), and Kelp Reference sites are shown in green (Point Vicente West & Rocky Point North).

Species Richness

| <i>Designation</i> | <i>Site</i> | 2011 | 2012 | 2013 | 2014 | 2015 | <i>Spring</i> | <i>Summer</i> |
|--------------------|------------------------|------|------|------|------|------|---------------|---------------|
| | | | | | | | 2016 | 2016 |
| Control | Abalone Cove Kelp West | 7 | 7 | 10 | 9 | 8 | 13 | 13 |
| | Marguerite Central | 6 | 10 | 10 | 9 | 11 | 8 | 11 |
| Restoration | Underwater Arch Cove | 6 | 9 | 6 | 12 | 8 | 7 | 6 |
| | Honeymoon Cove | — | 2 | 4 | 8 | 5 | 5 | 12 |
| Reference | Point Vicente West | 8 | 6 | 10 | 11 | 12 | 11 | 12 |
| | Rocky Point North | 8 | 8 | 8 | 9 | 6 | 7 | 5 |

Table 9. Fish Species Richness (total number of species)

*Note: *2014 is the first post-restoration year. Restoration began at the control site Marguerite Central in August 2014. However, urchin suppression was not done at the response monitoring location for this site. In the future, barren control sites will become restoration sites once these barrens are restored and analyses will compare differences between reference and restoration sites.*

Community Analyses

Two-dimensional, non-metric multidimensional scaling (nMDS) was used to examine patterns among kelp forest communities (Figure 25) and benthic cover (Figure 26) at sites using the 'metaMDS' function in the 'vegan' package (Oksanen et al. 2016) in R (R Core Team 2016). A similarity matrix constructed with transformed taxon-specific values (site means for each site/sampling period combination) and the Bray-Curtis similarity. To provide context to the observed relationships amongst sites, patterns of taxa densities were visualized across the nMDS ordination plots using the 'ordisurf' function in the R package 'vegan' (Oksanen et al. 2016) which fits a smooth surface using generalized additive modeling (GAM) with thin plate splines (Wood 2003, Oksanen et al. 2016). These visualizations help inform drivers of community structure as seen in nMDS plots.



Figure 25. Non-metric multidimensional ordination plot of kelp forest communities (numerical density of fishes, invertebrates, and kelps) using Bray-Curtis similarity based on the square-root transformed mean taxa density for each site/sampling period combination. Site designation is indicated by color, survey year is indicated by the transparency of each point with earlier dates more transparent and later dates nearly opaque.

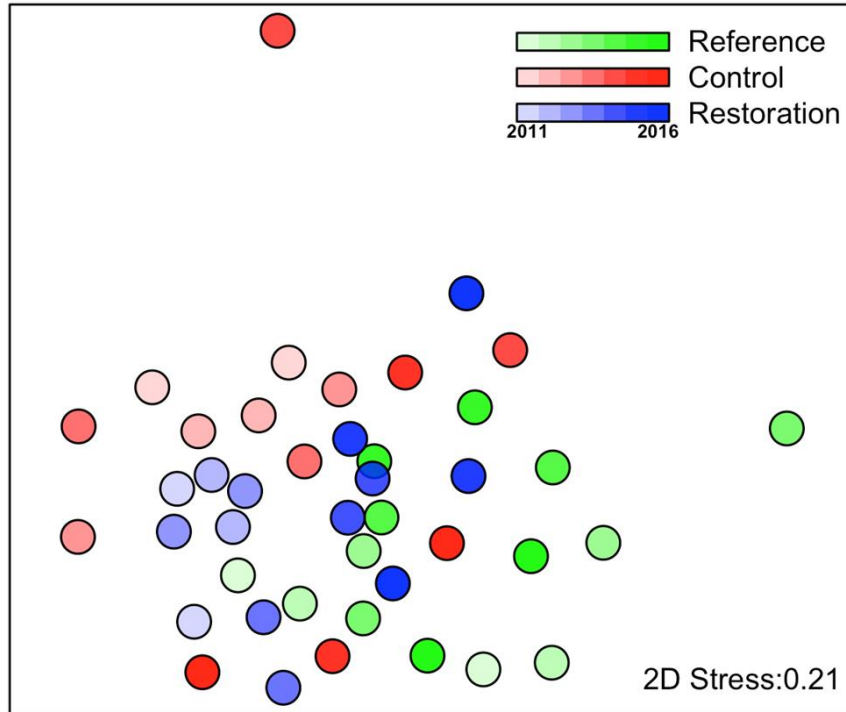


Figure 26. Non-metric multidimensional ordination plot of benthic cover using Bray-Curtis similarity based on the arcsine-square-root transformed mean taxa density for each site/sampling period combination. Site designation is indicated by color, survey year is indicated by the transparency of each point with earlier dates more transparent and later dates nearly opaque.

The two plots presented above display a convergence over time in which restoration sites begin to resemble, structurally, the reference sites. The earlier years depicted in these plots show that the converse was true in advance of restoration efforts- that the structure of restoration sites, pre restoration, resembled control sites. What also is displayed in these plots is a similar progression of control sites to resemble the structure of restored and reference sites over time. This could be the result of a poor or inappropriate experimental design, e.g. control sites being influenced indirectly by the proximity-occurrence of restoration actions, or other overwhelming factors.

In this case the interpretation of these results allows for a finer scale evaluation of the time of the shifts in community structure displayed more clearly in figure 25 than in figure 26. What we see in figure 25 suggests the movement of the restoration sites towards a more restoration-like structure in advance of the control sites, which display a lag in time.

Conclusions

The occurrence of a mass wasting event of red and purple sea urchins occurred with considerable severity on the Palos Verdes Peninsula impacting reference, restoration and control sites. This overall loss of top down pressure from urchins on the development of giant kelp and other macroalgae and the freeing from competition, of other grazers, may be the most likely cause of the progression of these three site types to converge in community structure in 2015-2016.

What may be said with greater confidence is that the loss of sea urchins (i.e. a reduction in their density) allows for the growth and development of other benthic organisms that are no longer limited by the direct and indirect impacts of sea urchin grazing. Further monitoring of these sites over time may detect trends that elucidate more subtle or developing relationships in community structure. Likely these characteristics will be displayed via divergence of these site types over time or in response to other forms of disturbance and other stressors. Fortunately this project will provide that opportunity to collect those data informing those potentials.

What may also be said is that sea urchin suppression creates similar near term changes in community structure to widespread reductions in urchins due to disease. These different causes of urchin density reduction (i.e. suppression and natural loss due to disease) have both driven formerly barren reef states to resemble reference sites (i.e. sites with persistent kelp and increased community structure). These results suggest that in the near term urchin suppression is a fair mimic for natural losses in urchin populations driving kelp forest community structure on a local scale.

It is also important to note which drivers within the community explain the bulk of the transitions/progression in each of the figures. In figure 25, sites with larger numbers of echinoderms are present at the right side of the plot while sites that have larger numbers of kelps are present on the left. In figure 26, sites with higher bare rock and crustose coralline algae appear on the left of the plot, sites with *Eisenia arborea* holdfasts and erect red algae present towards the bottom-right, sites with more red turf erect coralline algae are placed in the middle, and sites with more giant kelp holdfasts are placed towards the bottom.

Evaluation of Restoration Activities

A few statements can be made that generally describe conditions during this report period that directly impacted the amount, type, and accuracy of work conducted. 2015-2016 proved to be one of the most powerful El Niño signatures recorded on the west coast of the United States. This El Niño event followed and was perhaps strengthened by the persistence of “the blob”, a large area of atypically warm ocean surface water that impacted the California Current. For Palos Verdes and elsewhere in southern California, these environmental factors resulted in abnormally high sea surface temperatures, which were only punctuated periodically by localized upwelling events. The thermal related stress associated with the confluence of these stressors slowed or prevented the development of giant kelp and other macroalgae, and may have contributed to the virulence and mass wasting of several genera of sea stars and in the fall of 2015 a seemingly similar yet less widespread wasting of sea urchins. In fall 2015, the project failed to collect sufficient numbers of red sea urchins and none of marketable size to successfully analyze their gonadosomatic scores. Sufficient purples were found but they too were also reduced in number. Restoration actions were suspended for all teams and all sites in

fall 2015. The restoration teams were reengaged in June 2016 following a nine month hiatus, (starting with work in Marguerite). There are currently no signs of further wasting disease off of Palos Verdes and exploration into the boulder fields that comprise the nonconsolidated portions of the reef complexes show numerous purple sea urchins and some reds that are displaying cryptic behavior perhaps in response to the warm water and wasting event. The project partners are paying close attention to the extant condition of the reefs on the Palos Verdes Peninsula to identify any significant changes as they occur during the relaxation of the El Niño which is predicted for fall-winter 2016.

It is also important to note that the timing of the response monitoring for fishes and other community responses to the restoration efforts were conducted in the late spring and early summer in 2011-2014, with only two exceptions in 2011, (i.e., Honeymoon Cove and Point Vicente West were monitored on 1-28-2011 and 10-12-2011 respectively). In 2015, the surveys were conducted within the month of September with the exception of Honeymoon Cove which was surveyed on 8-19-2015. In 2016, 2 rounds of surveys were conducted in spring and summer (Table 2). This shift in seasonality may affect some species differentially skewing the data. Perhaps more significant is the strong ENSO signature this year- sea surface temperatures have been elevated throughout 2015, with persistent sea surface temperatures off of Palos Verdes neighboring 20 degrees Celsius. These abnormally high temperatures are known to affect species composition within southern California rocky reef systems.

To date we have successfully reduced purple sea urchin densities in restoration sites. This reduction in urchins has shown a corresponding increase in giant kelp in restored areas and a shift in community structure towards kelp forest reference sites. As El Niño conditions and the urchin wasting event in southern California subsides we anticipate further changes in the kelp forest community off the Palos Verdes peninsula.

References

- Bradley, RA, and Bradley, DW 1993. Wintering shorebirds increase after kelp (Macrocystis) recovery. *The Condor*, 95: 372-376
- Californian Department of Fish and Wildlife 2005. Abalone Recovery and Management Plan. www.dfg.ca.gov/mrd/amp/index.html.
- Californian Department of Fish and Wildlife 2016. Marine Region 2015 By the Numbers. <https://www.wildlife.ca.gov/Fishing/Ocean/Year-In-Review>
- Claisse et al. 2013. Kelp forest restoration has the potential to increase sea urchin gonad biomass. *Ecosphere* 4(3):38
- Cowen, RK 1983. The effects of sheephead (*Semicossyphus pulcher*) predation on red sea urchin (*Strongylocentrotus franciscanus*) populations: an experimental analysis. *Oecologia*, 58: 249-255.
- Dayton, PK 1985. Ecology of Kelp Communities. *Annual Review of Ecology and Systematics*, 16: 215-245.
- Dayton, P, Tegner, M, Edwards, P, and Riser, K 1998. Sliding baselines, ghosts, and reduced expectations in kelp forest communities. *Ecological Applications*, 8: 309-322.
- Dojiri M, Yamaguchi M, Weisberg SB, Lee HJ 2003. Changing anthropogenic influence on the Santa Monica Bay watershed. *Marine Environmental Research* 56: 1-14
- Duggins DO, Simenstad CA, Estes JA 1989. Magnification of secondary production by kelp detritus in coastal marine ecosystems. *Science* 245: 170-173
- Edwards, M 2004. Estimating scale-dependency in disturbance impacts: El Niños and giant kelp forests in the northeast Pacific. *Oecologia*, 138: 436-447.
- Erisman BE, Allen LG, Claisse JT, Pondella DJ, Miller EF, Murray JH, Walters C 2011. The illusion of plenty: hyperstability masks collapses in two recreational fisheries that target fish spawning aggregations. *Canadian Journal of Fisheries and Aquatic Sciences* 68: 1705-1716
- Ford T, Meux B 2010. Giant kelp community restoration in Santa Monica Bay. *Urban Coast* 2: 43-46
- Foster MS, Schiel DR 2010. Loss of predators and the collapse of southern California kelp forests (?): Alternatives, explanations and generalizations. *Journal of Experimental Marine Biology and Ecology* 393: 59-70

- Graham MH 2004. Effects of local deforestation on the diversity and structure of southern California giant kelp forest food webs. *Ecosystems* 7: 341-357
- Graham MH, Vasquez JA, Buschmann AH 2007. Global ecology of the giant kelp *Macrocystis*: from ecotypes to ecosystems. *Oceanography and Marine Biology: An Annual Review* 45: 39-88
- Harrold C, Reed DC 1985. Food availability, sea urchin grazing, and kelp forest community structure. *Ecology* 66: 1160-1169
- Jackson, JBC 2001. What was natural in the coastal oceans? *Proceedings of the National Academy of Sciences of the United States of America*, 98: 5411-5418.
- Kildow, J, and Colgan, CS 2005. California's ocean ecology. Report to the Resources Agency, State of California. Prepared by The National Ocean Economics Program. http://resources.ca.gov/press_documents/CA_Ocean_Econ_Report.pdf.
- Lafferty, KD 2004. Fishing for lobsters indirectly increases epidemics in Sea Urchins. *Ecological Applications*, 14: 1566-1573.
- Love, M 2006. Subsistence, Commercial, and Recreational Fisheries. In: Allen L, Pondella II D, Horn M (eds) *Ecology of Marine Fishes*. University of California Press, Berkeley, pp 567-594
- Norderhaug, KM, and Christie, HC 2009. Sea urchin grazing and kelp re-vegetation in the NE Atlantic. *Marine Biology Research*, 5: 515-528.
- Pondella D, II 2009. Science Based Regulation: California's Marine Protected Areas. *Urban Coast* 1: 33-36
- Pondella DJ, Williams JP, Claisse JT, Schaffner B, Schiff K 2011. Physical and biological characteristics of nearshore rocky reefs in the Southern California Bight: A report to the Southern California Water Research Project. 26 pp.
- Schiff K 2003. Impacts of stormwater discharges on the nearshore benthic environment of Santa Monica Bay. *Marine Environmental Research* 56: 225-243
- Sikich S, James K 2010. Averting the scourge of the seas: Local and state efforts to prevent plastic marine pollution. *Urban Coast* 1: 35-39
- Smith, JR, Reed, BJ, Mohajerani, L, and Fong, P 2004. Influence of abiotic factors on the persistence of kelp habitats along the north coast of Santa Monica Bay. *Bulletin of the Southern California Academy of Sciences*, 103: 79-92.
- Steneck, RS, Graham, MH, Bourque, BJ, Corbett, D., Erlandson, J. M., Estes, J. A., and Tegner, M. J. 2002. Kelp forest ecosystems: biodiversity, stability, resilience and future. *Environmental Conservation*, 29: 436-459.
- Tegner MJ, Dayton PK 2000. Ecosystem effects of fishing in kelp forest communities. *ICES Journal of Marine Science* 57: 579-589

