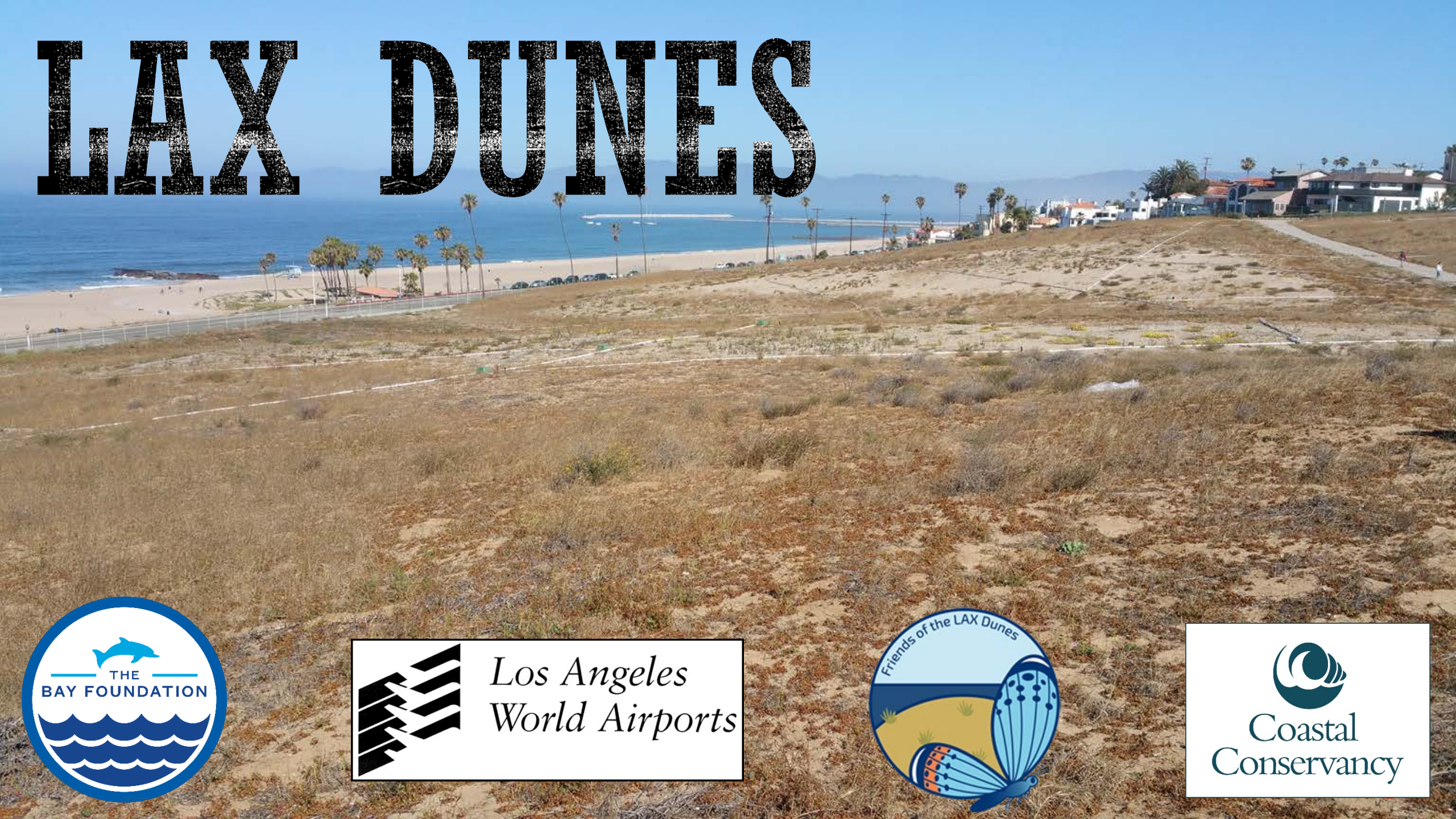


LAX DUNES



*Los Angeles
World Airports*



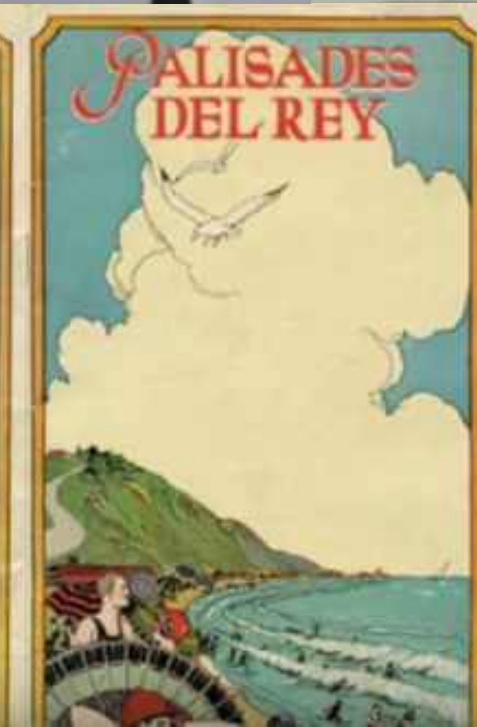
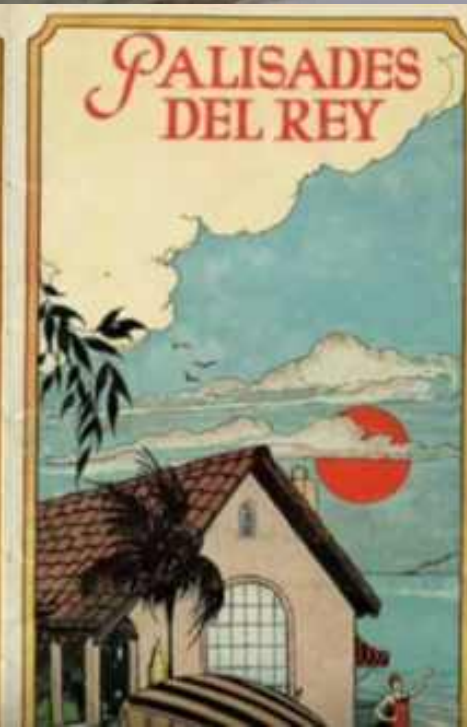

Coastal
Conservancy

LAX DUNTS

Camelops
(extinct)

Modern camels





PALISADES

Del Rey

1920s

Duke Dukesherer Collection



All the original homes were topped with red tile.

Part of the LAX Dunes can be seen to the right.

The home on the right was one of the original homes built in 1925.

It still stands today at 200 Waterview St., just a block from the beach (above).



1950s & 60s



Before



Vista del Mar



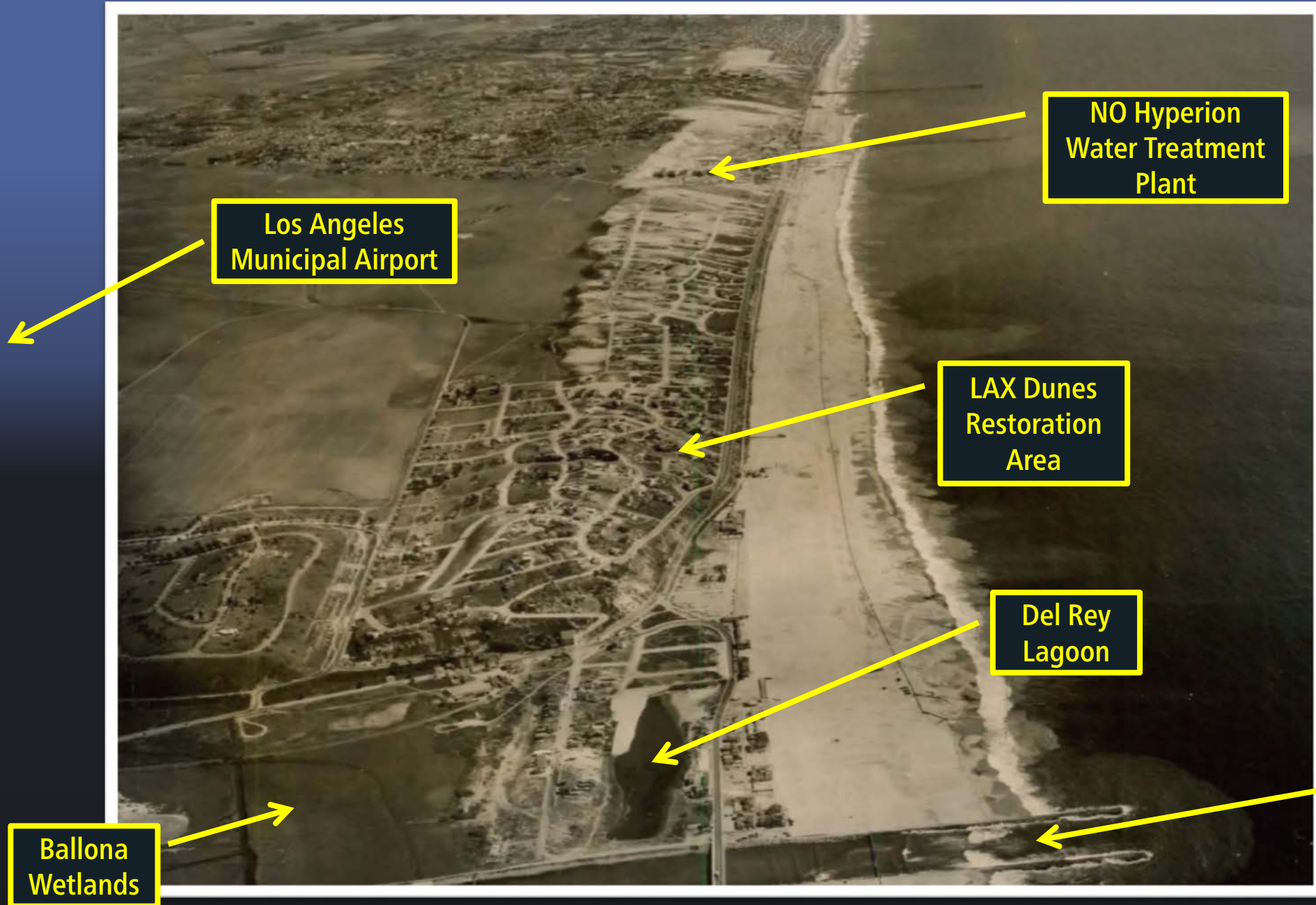
After



Vista del Mar



1940s



2017

Hyperion Water Treatment Plant

LAX

LAX Dunes Restoration Area

Del Rey Lagoon

Ballona Creek/Marina del Rey

Ballona Wetlands



Data CSUMB SFML, CA OPC
Image © 2017 TerraMetrics
Data USGS



Before





After



SOME OF THE LAX DUNES' NATIVE PLANTS



El Segundo Blue Butterfly

male (L) & female (R)



Cliff Buckwheat

(*Eriogonum parvifolium*)





Beach Evening Primrose

Camissoniopsis cheiranthifolia

Photos taken at the LAX
Dunes on May 6, 2017

Native



California Croton

Croton californicus



Native





Deerweed
Acmispon glaber

Native

Jimson Weed

Datura wrightii

Native



Sand Verbena

Abronia umbellata



THIS BABY SAND
VERBENA IS GROWING
ON THE SANTA MONICA
SITE PATAGONIA
SPONSORED LAST
YEAR!

Native



A close-up photograph of a Silver Beach Bur plant. The plant features numerous small, silvery-green, deeply lobed leaves that are densely packed. Interspersed among the foliage are several small, bright yellow-green flower heads. The plant is growing in a sandy, coastal environment, with dry, brown twigs and debris visible in the background.

Silver Beach Bur

Ambrosia chamissonis

Native

South Coast Branching phacelia

Phacelia ramosissima

Native



INVASIVE PLANTS!!





Acacia Trees

Acacia cyclops

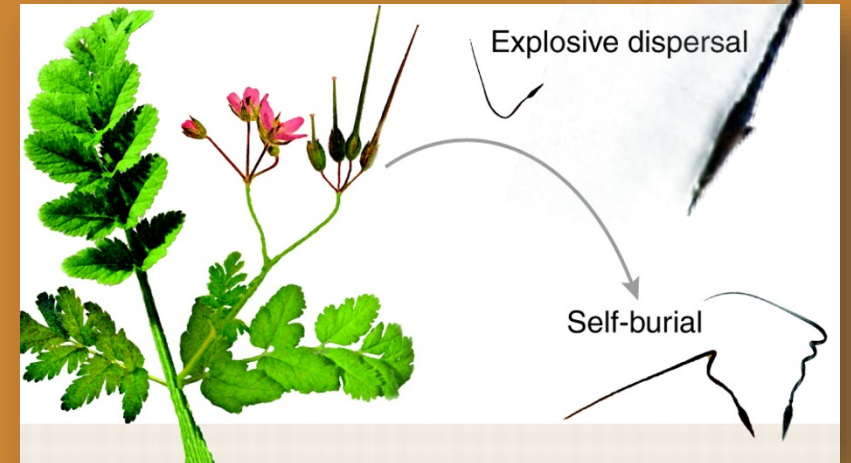
Acacia retinoides

Invasive



Filaree

Erodium botrys & *E. cicutarium*



Invasive



Black Mustard

Brassica nigra



Invasive





Foxtail Brome

Bromus madritensis

Invasive





Iceplant

*Carpobrotus
edulis*

Invasive



A close-up photograph of Ripgut grass (Bromus diandrus) seed heads. The seed heads are green and elongated, with long, thin awns extending from them. The background is a blurred field of similar grasses.

Ripgut

Bromus diandrus

Invasive



Russian thistle

Salsola tragus

Invasive



Wild Oat

Avena fatua

Invasive



A photograph of a Wild Radish plant (Raphanus sativus) growing in a field of dry grass. The plant has green, lobed leaves and several upright stems with clusters of small, light purple flowers. The background is a dense field of dry, brown grass.

Wild Radish

Raphanus sativus

Invasive



Geraldton carnation weed

Euphorbia terracina

Invasive



*Environmental Weeds
of Australia*



NATIVE CRITTERS



San Diego Horned Lizard

Phrynosoma coronatum blainvillii



Native



California Silvery Legless Lizard

Anniella pulchra



Native

California Common Scorpion

Paruroctonus silvestrii



Native



LAX DUNES FACTS

- Largest dunes complex in Southern California
- Once extended from Palos Verdes to Santa Monica
- About 50,000 years old
- Bones of an extinct member of the camel family were found (*Camelops*, *Camelops hersternus*)
- The neighborhood north of the dunes was once called 'Palisades del Rey,' today Playa del Rey
- The neighborhood that once inhabited the dunes was called 'Surfridge'
- In the 1920s, 'Palisades del Rey' was the place to be; Spanish-style villas housed the rich & famous
- 1928 — Mines Field opened, a small airport later to be known as LAX (1941)
- 1930s — The area fell into decline after the Great Depression
- 1940s—1950s — After WWII, the area revived and 600 more modest homes were built
- As LAX grew and planes got louder, Surfridge residents started to complain about noise and soot. Since nothing could be done to alleviate the problem, through eminent domain, the City of LA purchase all the homes and forced residents to move, a process that happened from the late-1960s to the early 1980s.
- Today, the LAX Dunes (aka El Segundo Dunes) is about 300-acres, mostly designated a protected wildlife Preserve.

May 6, 2017
Friends of the LAX Dunes
Volunteer Day

Lighter green *Euphorbia terracina* scrubs
surround the darker green native shrubs



Two hours later,
much of the
Euphorbia has been
removed!

