

LAX DUNES

Appendix B



LAX DUNES FACTS

- Largest dunes complex in Southern California
- Once extended from Palos Verdes to Santa Monica
- About 50,000 years old
- Bones of an extinct member of the camel family were found (*Camelops*, *Camelops hersternus*)
- The neighborhood north of the dunes was once called 'Palisades del Rey,' today Playa del Rey
- The neighborhood that once inhabited the dunes was called 'Surfridge'
- In the 1920s, 'Palisades del Rey' was the place to be; Spanish-style villas housed the rich & famous
- 1928 — Mines Field opened, a small airport later to be known as LAX (1941)
- 1930s — The area fell into decline after the Great Depression
- 1940s—1950s — After WWII, the area revived and 600 more modest homes were built
- As LAX grew and planes got louder, Surfridge residents started to complain about noise and soot. Since nothing could be done to alleviate the problem, through eminent domain, the City of LA purchase all the homes and forced residents to move, a process that happened from the late-1960s to the early 1980s.
- Today, the LAX Dunes (aka El Segundo Dunes) is about 300-acres, mostly designated a protected wildlife Preserve.



LAX DUMPS

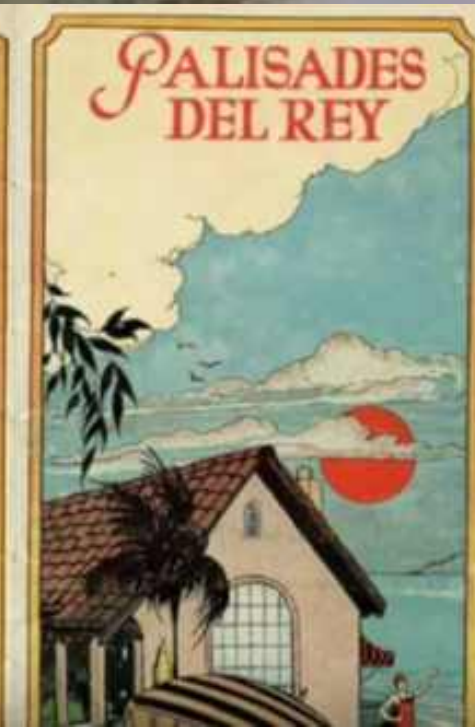
Camelops

(extinct)

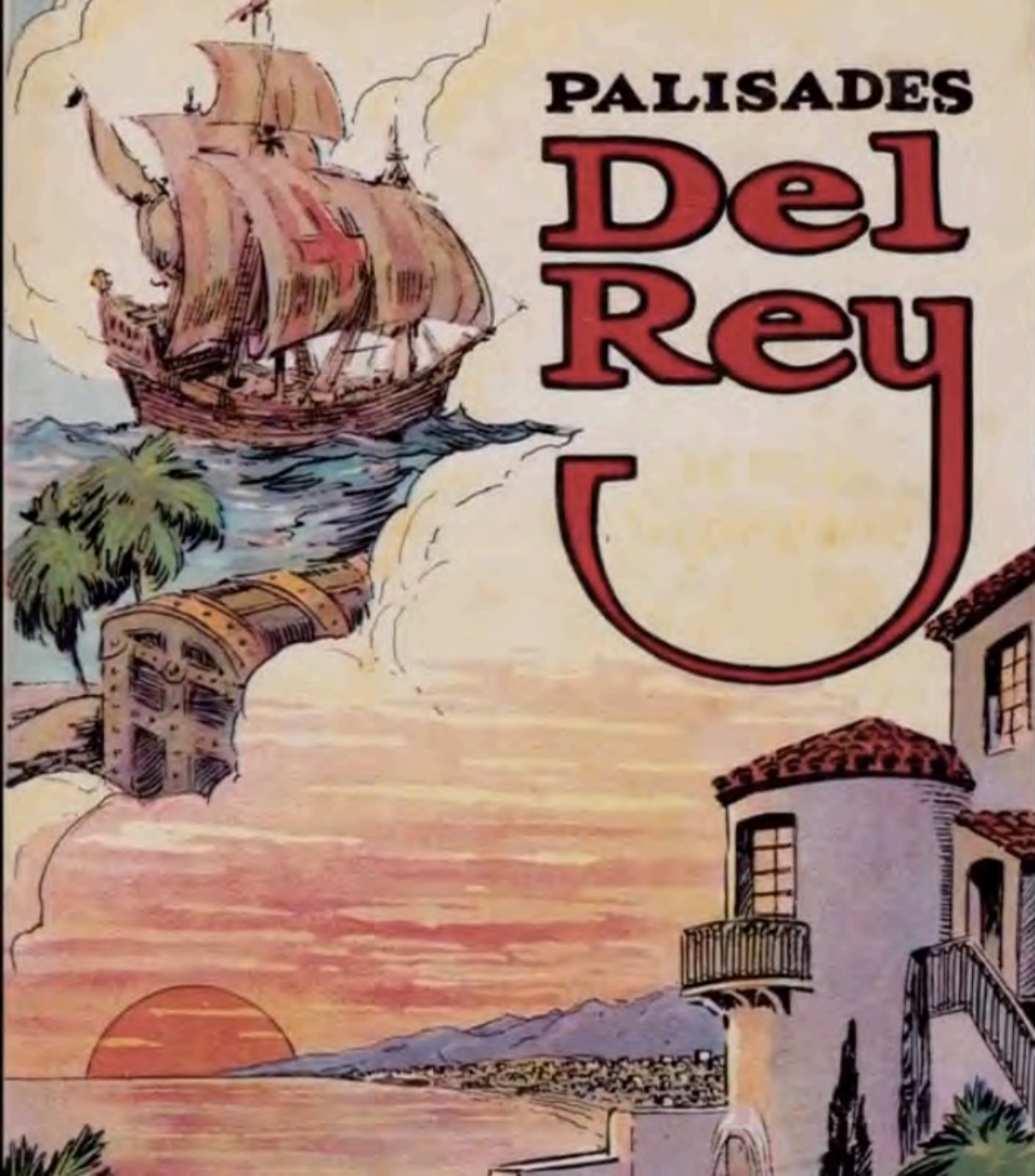


Modern camels

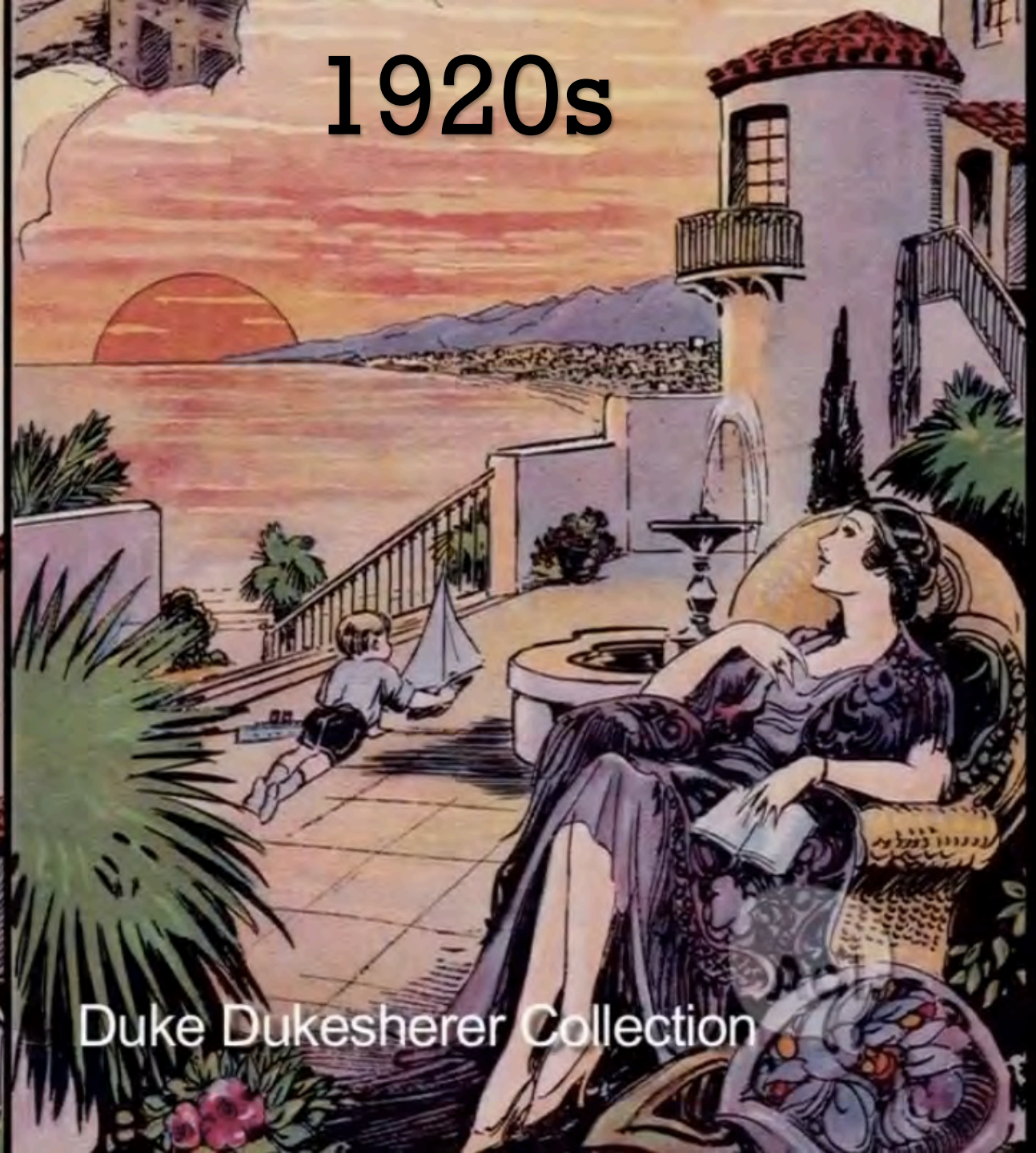




PALISADES
Del
Rey



1920s



Duke Dukesherer Collection



All the original homes were topped with red tile.

Part of the LAX Dunes can be seen to the right.



The home on the right was one of the original homes built in 1925.

It still stands today at 200 Waterview St., just a block from the beach (above).

1950s & 60s



Before



Vista del Mar



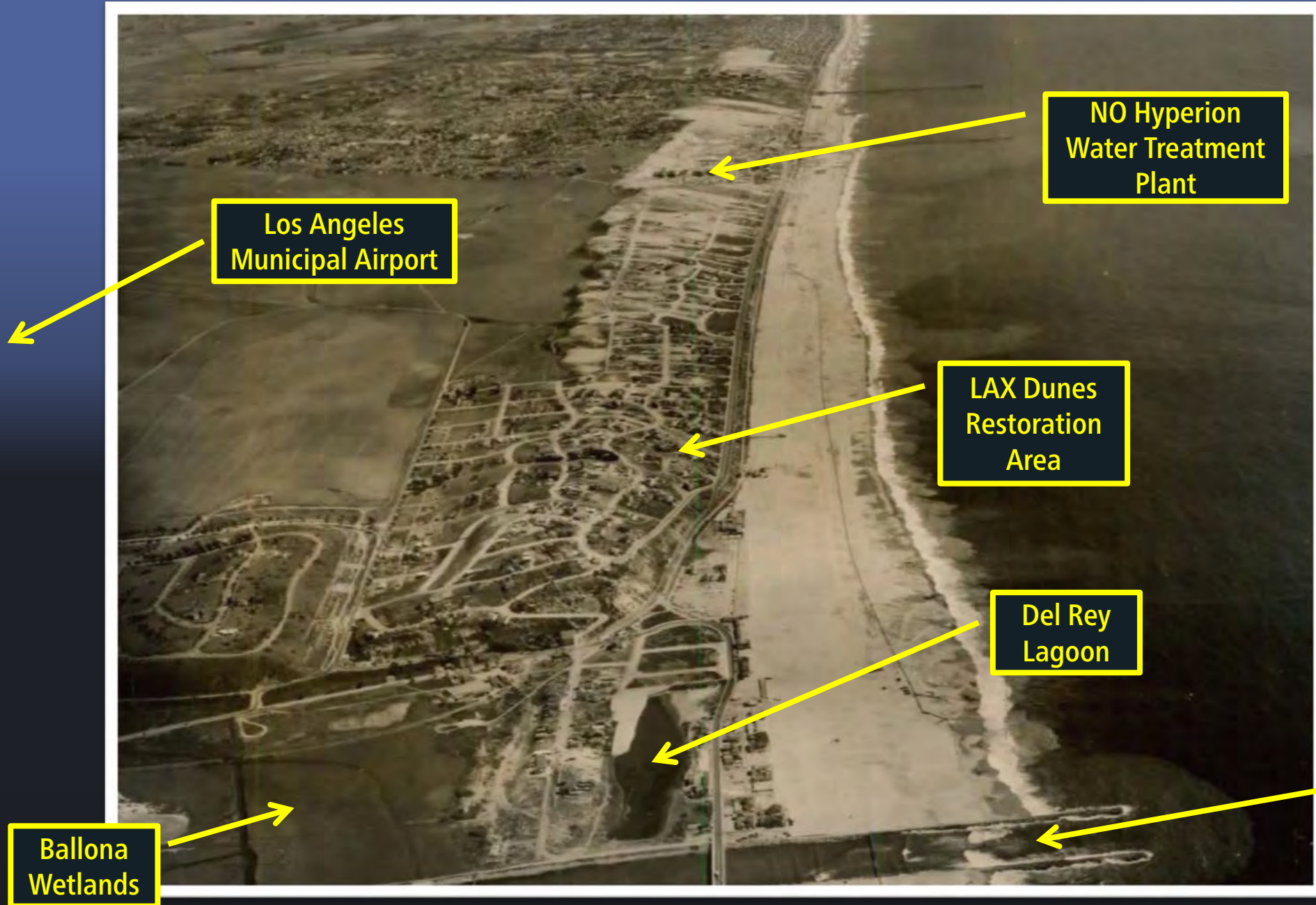
After



Vista del Mar



1940s



Los Angeles
Municipal Airport

NO Hyperion
Water Treatment
Plant

LAX Dunes
Restoration
Area

Del Rey
Lagoon

Ballona
Wetlands

Ballona Creek
NO Marina del
Rey



2017

Hyperion Water Treatment Plant

LAX Dunes Restoration Area

Del Rey Lagoon

Ballona Creek/Marina del Rey

Ballona Wetlands

LAX

Los Angeles International Airport (LAX)

1496 ft

Data CSUMB SFML, CA OPC
Image © 2017 TerraMetrics
Data USGS



PALISADES DEL REY AND SURFRIDGE

LEGEND
LIGHT GREEN -
Residential Areas
DARK GREEN -
Residential Areas
ORANGE -
Residential Areas
DARK GREEN -
Residential Areas
DARK GREEN -
Residential Areas
See notes on the restrictions



Before





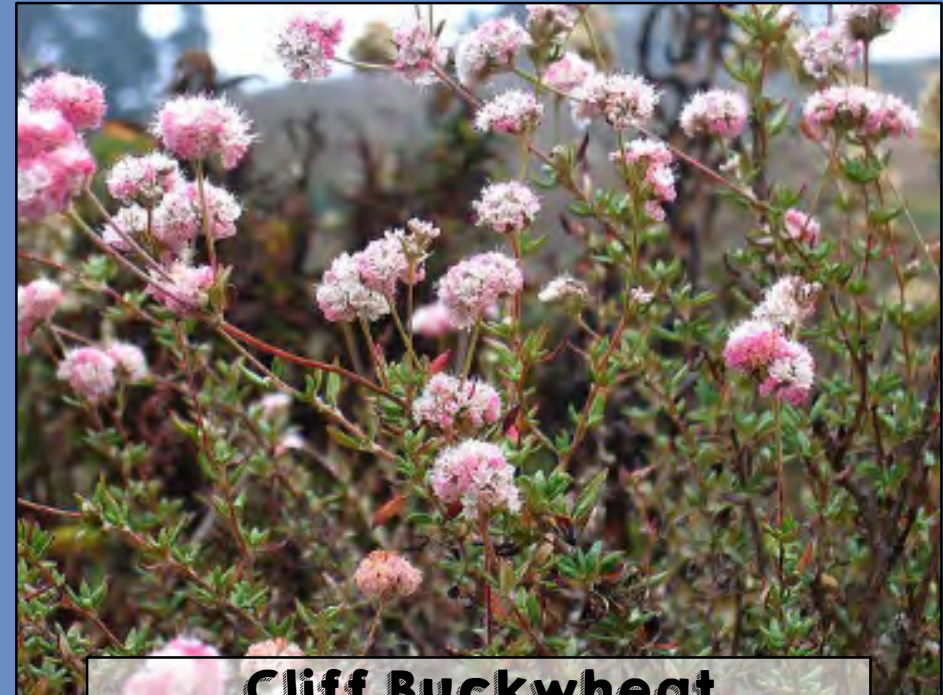
After



SOME OF THE LAX DUNES' NATIVE PLANTS



El Segundo Blue Butterfly
male (L) & female (R)



Cliff Buckwheat
(*Eriogonum parvifolium*)





Beach Evening Primrose

Camissoniopsis cheiranthifolia

Photos taken at the LAX
Dunes on May 6, 2017

Native



California Croton

Croton californicus



Native





Deerweed
Acmispon glaber

Native

Jimson Weed

Datura wrightii

Native



Sand Verbena

Abronia umbellata



*THIS BABY SAND
VERBENA IS GROWING
ON THE SANTA MONICA
SITE PATAGONIA
SPONSORED LAST
YEAR!*



Native





Silver Beach Bur

Ambrosia chamissonis

Native

South Coast Branching phacelia

Phacelia ramosissima

Native



INVASIVE PLANTS!!





Acacia Trees

Acacia cyclops
Acacia retinoides

Invasive

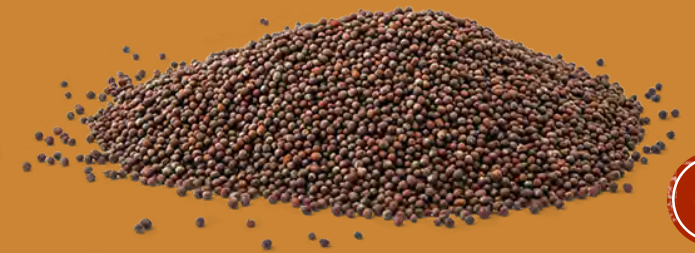


Black Mustard

Brassica nigra



Invasive





Foxtail Brome

Bromus madritensis

Invasive





Iceplant

*Carpobrotus
edulis*

Invasive





Ripgut

Bromus diandrus

Invasive



Russian thistle

Salsola tragus

Invasive



Wild Oat

Avena fatua

Invasive



Wild Radish

Raphanus sativus

Invasive



Geraldton carnation weed *Euphorbia terracina*

Invasive



*Environmental Weeds
of Australia*



NATIVE CRITTERS



San Diego Horned Lizard

Phrynosoma coronatum blainvillii



Native



California Silvery Legless Lizard

Anniella pulchra



Native

California Common Scorpion

Paruroctonus silvestrii



Native



May 6, 2017
Friends of the LAX Dunes
Volunteer Day

Lighter green *Euphorbia terracina* scrubs surround the darker green native shrubs



Two hours later,
much of the
Euphorbia has been
removed!

