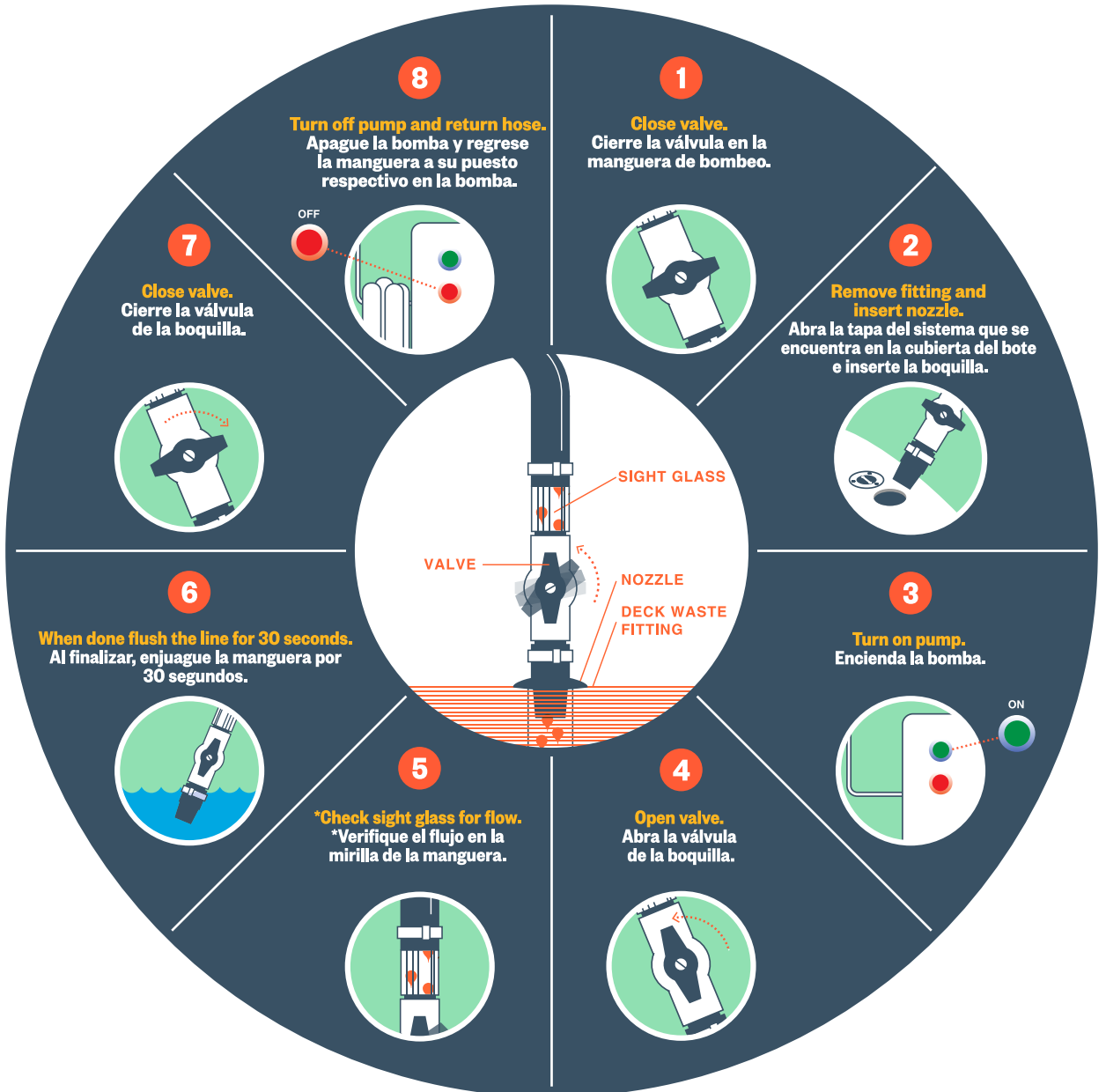


# PUMPOUT OPERATING INSTRUCTIONS

## INSTRUCCIONES



\* If flow does not begin within one minute, place nozzle in water for ten seconds. If there is still no flow, check for an air leak or clog in hose or holding tank air vent.  
\* Si no hay flujo después de un minuto, coloque la boquilla en agua durante diez segundos. Si todavía no hay flujo, verifique que no haya una fuga de aire o una obstrucción en la manguera o en el orificio de ventilación del tanque de aguas negras.

Created by THE BAY FOUNDATION and funded by CALIFORNIA STATE PARKS DIVISION OF BOATING AND WATERWAYS with funding provided by U.S. FISH AND WILDLIFE SERVICE, SPORT FISH RESTORATION and BOATING TRUST FUND.