



Community Restoration at the Ballona Reserve: 5-Year Update (Aug 2020 – July 2021)

Karina Johnston, Science Director, The Bay Foundation

Iceplant Invasion over time at Ballona

Ballona site-wide:

- 2007 = 22.96 acres
- 2013 = 28.20 acres + 23% increase in six years

Project Area & Adjacent:

- 2007 = 11.41 acres
- 2013 = 13.57 acres + 19% increase in six years

Project Area

2013
Mapping
Data



Project Goals

- Remove invasive vegetation in targeted Reserve area
- Broaden public involvement and stewardship at Ballona
- Enhance the area for native plants



5-Year Statistics

- 1.71 acres (5 Years)
- 34.5 tons of iceplant removed since 2016
- 457 volunteers contributing over 1,200 hours to the project
- 41 public events held
- 31 targeted events (staff / interns) Year 5 only



Challenges

- Permit delays
- Illegal vehicle incursions and sediment dumping
- Annual non-native species
- Areas of site with low native recruitment
- Covid-19 halt to restoration events
- Revegetation, adaptive management, maintenance



Revegetation in Year 5

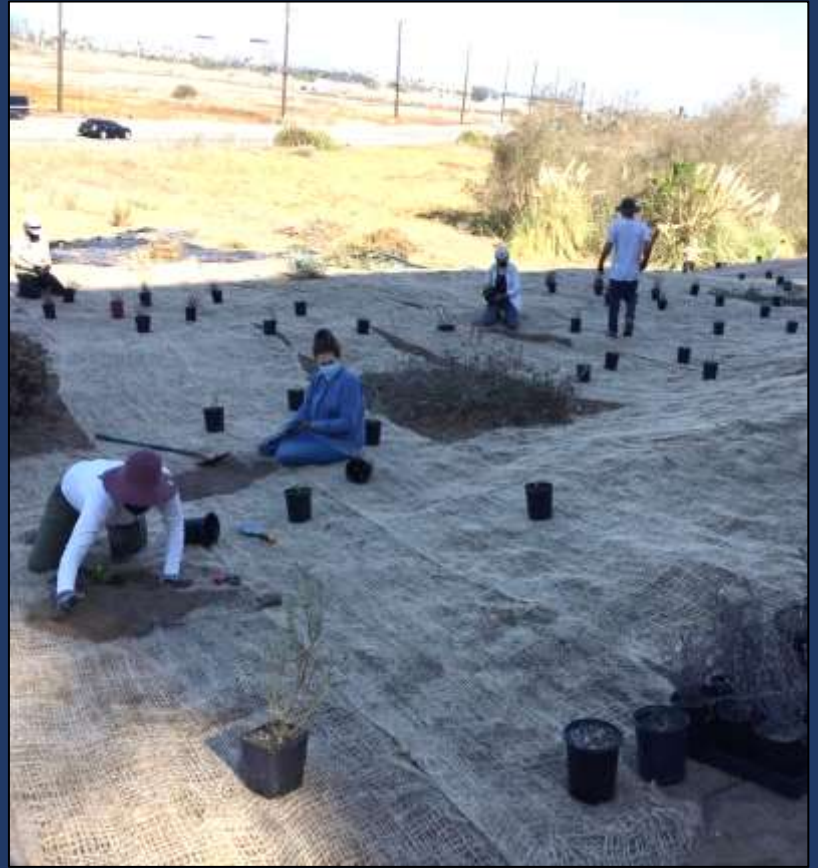
- 1,480 container stock native plants
- Over 34 lbs of native plant seed
- **Partners:** LA Conservation Corps, Friends of Ballona Wetlands, CDFW, E. Read and Associates
- **25 native plant species:** alkali heath, alkali weed, heliotrope, deerweed, white sage, black sage, CA sagebrush, Parish's glasswort, big saltbush, coyotebush, mulefat, beach evening primrose, giant wild rye, beardless wild rye, CA sunflower, mockheather, poppy, coast goldenbush, bicolor lupine, dune lupine, phacelia, lemonade berry, purple needlegrass, woolly seablite, *sea cliff buckwheat*
- **Natives present but not planted:** saltgrass, pickleweed



Sea Cliff Buckwheat (*Eriogonum parvifolium*)

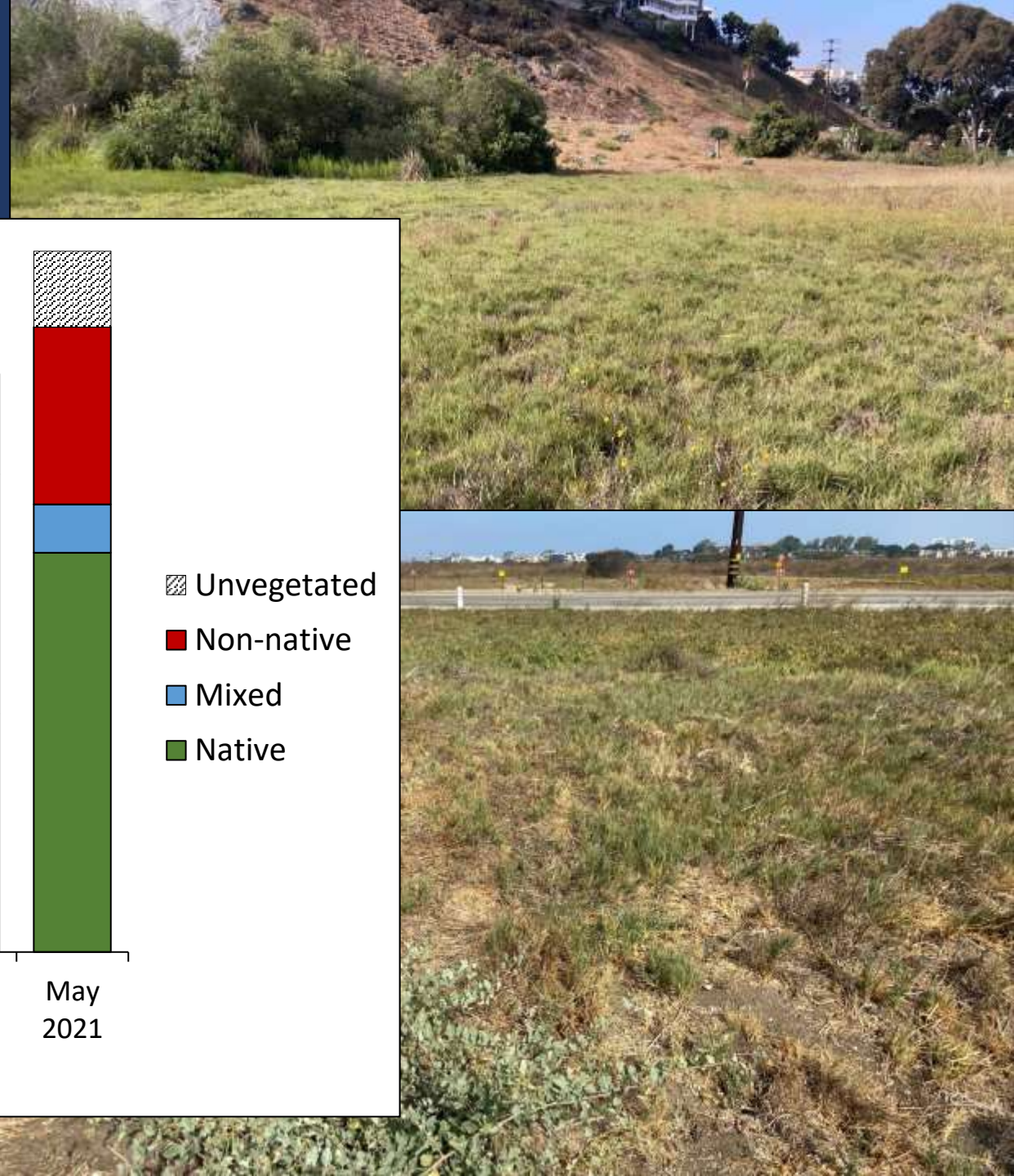
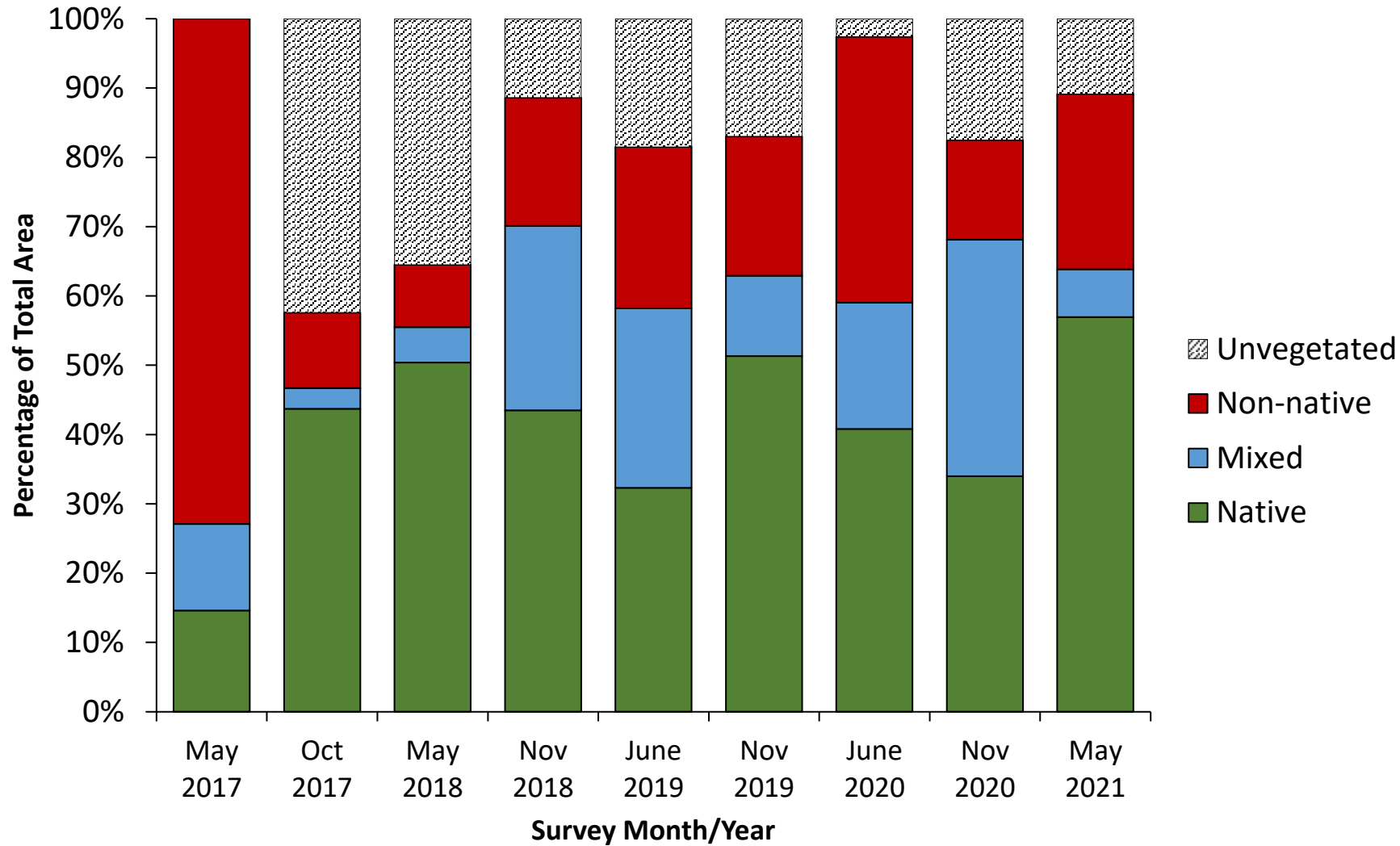


- Host plant for El Segundo Blue Butterfly (federally endangered)
- Friends of Ballona Wetlands successful dune habitat restoration nearby
- Important for pollinators

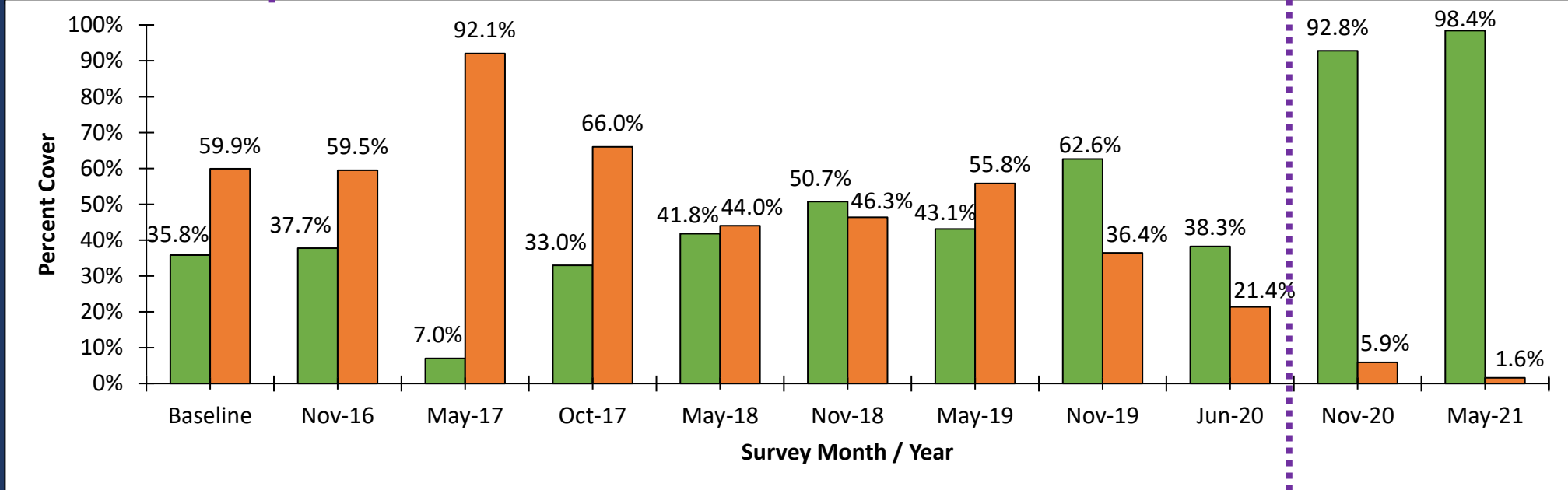
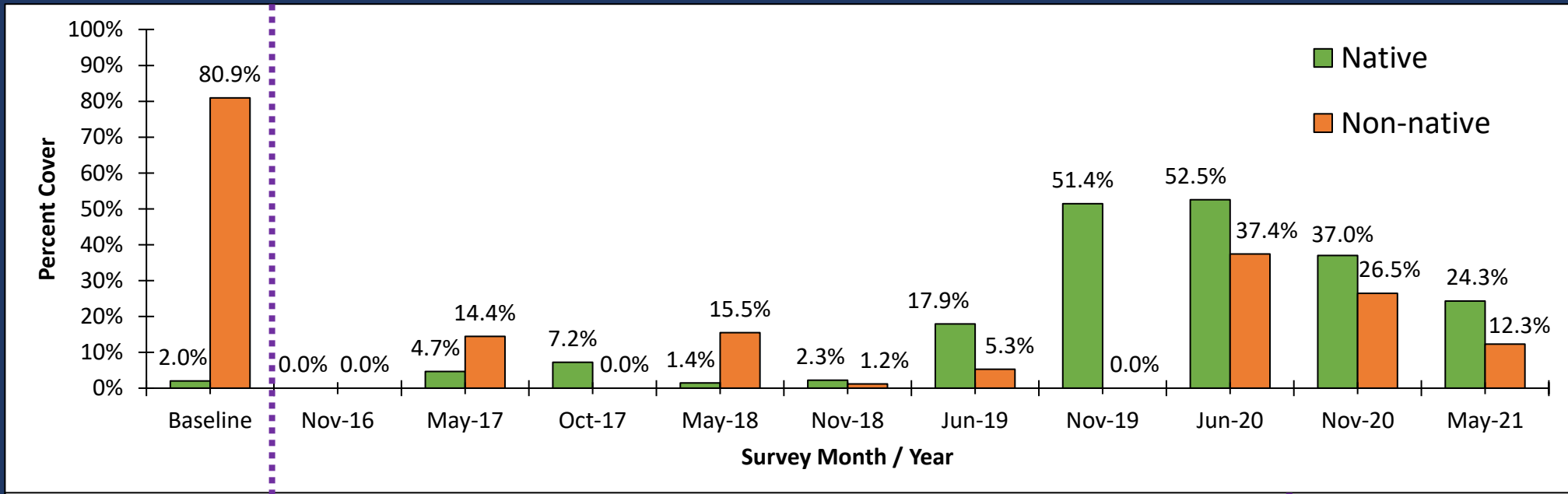


Revegetation in Year 5

Vegetation Cover – Site-Wide

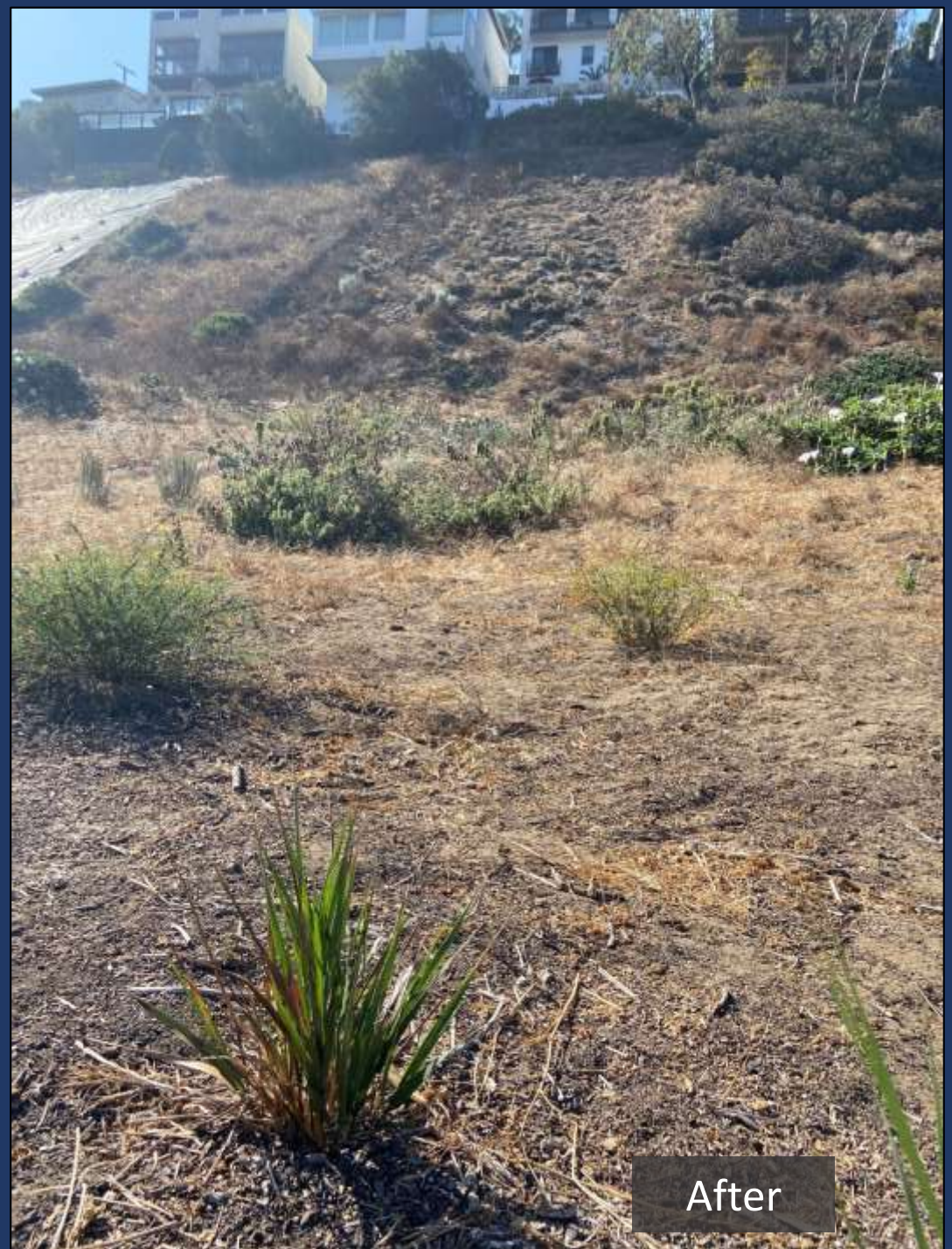


Vegetation Cover – Transect Data





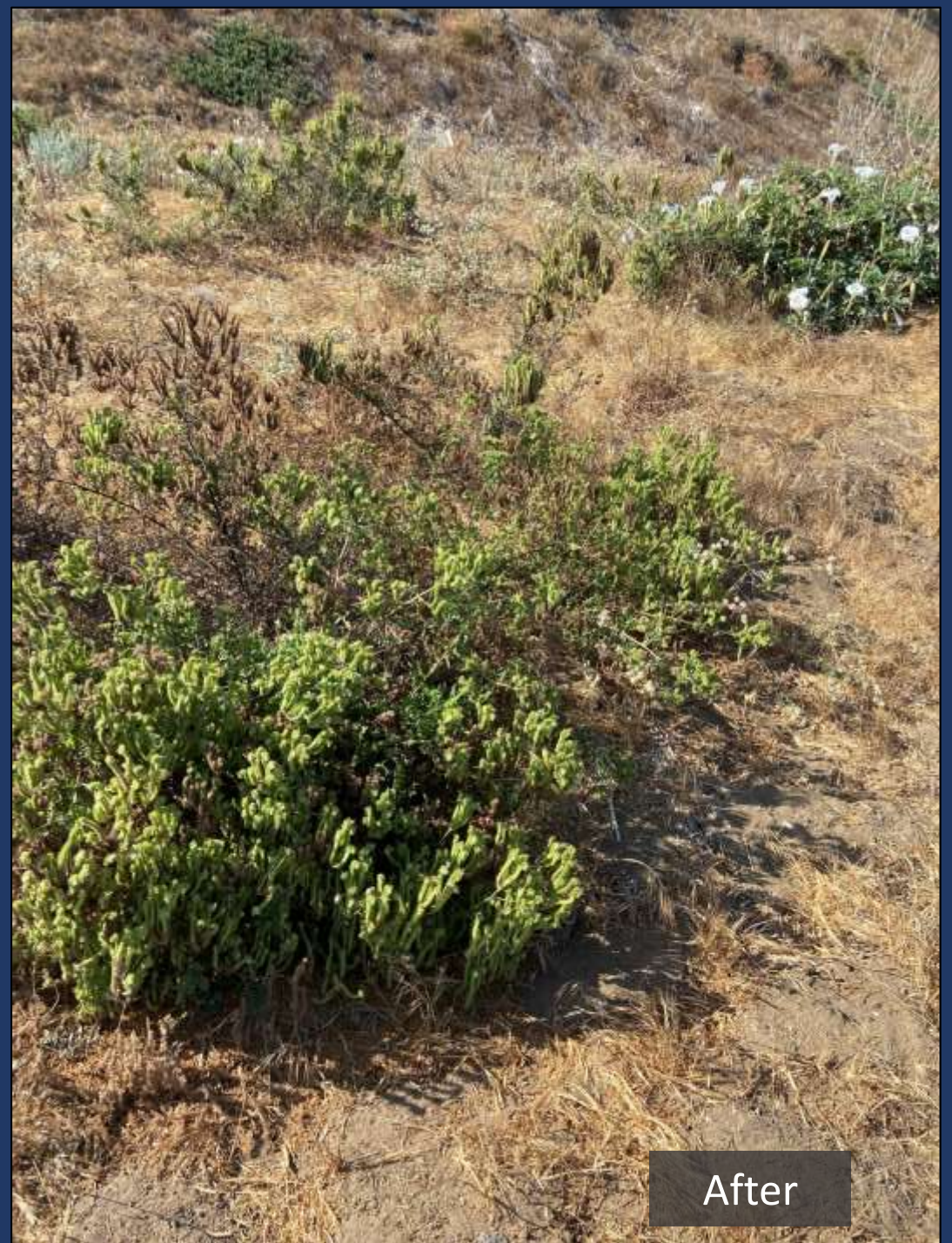
Before



After



Before



After



Before



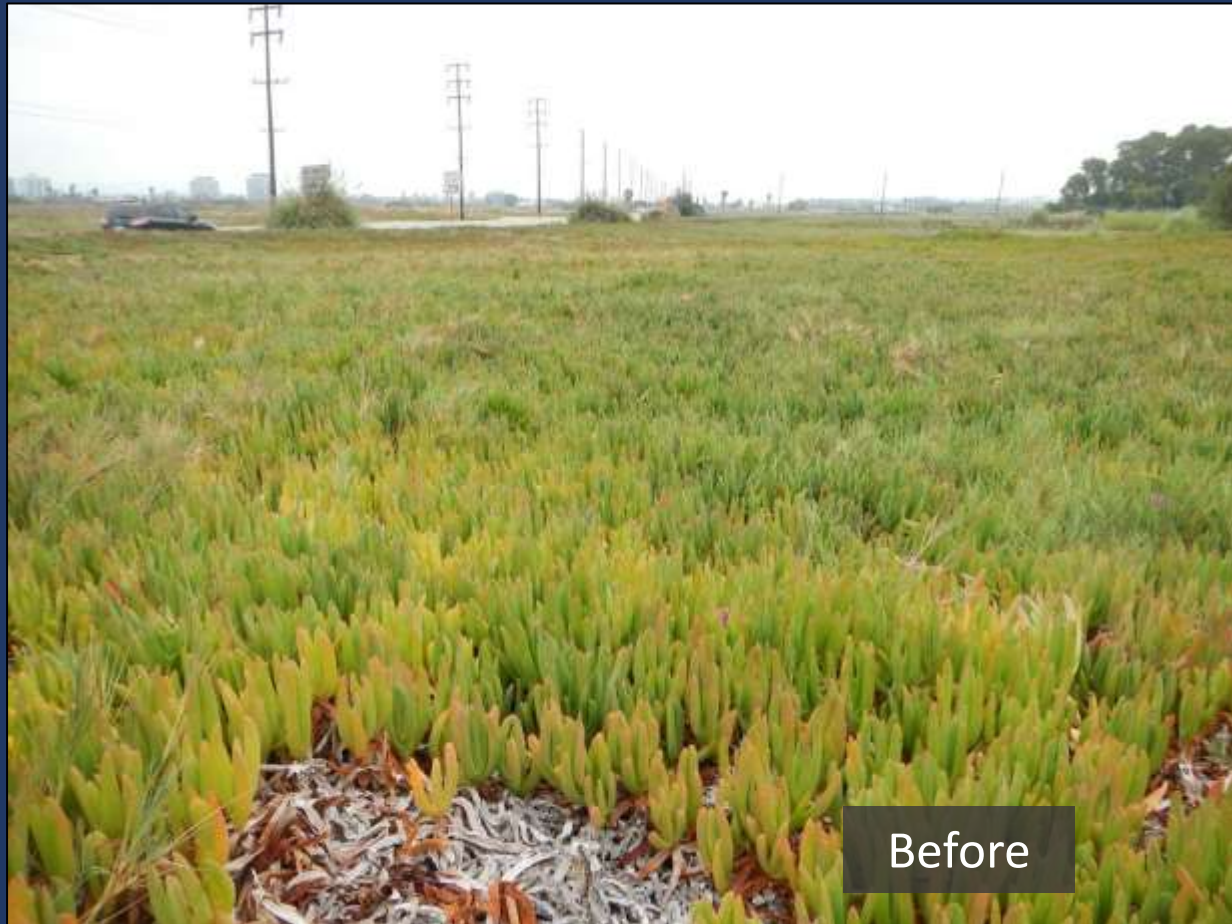
After



Before



After



Before



After



Before



After



Before

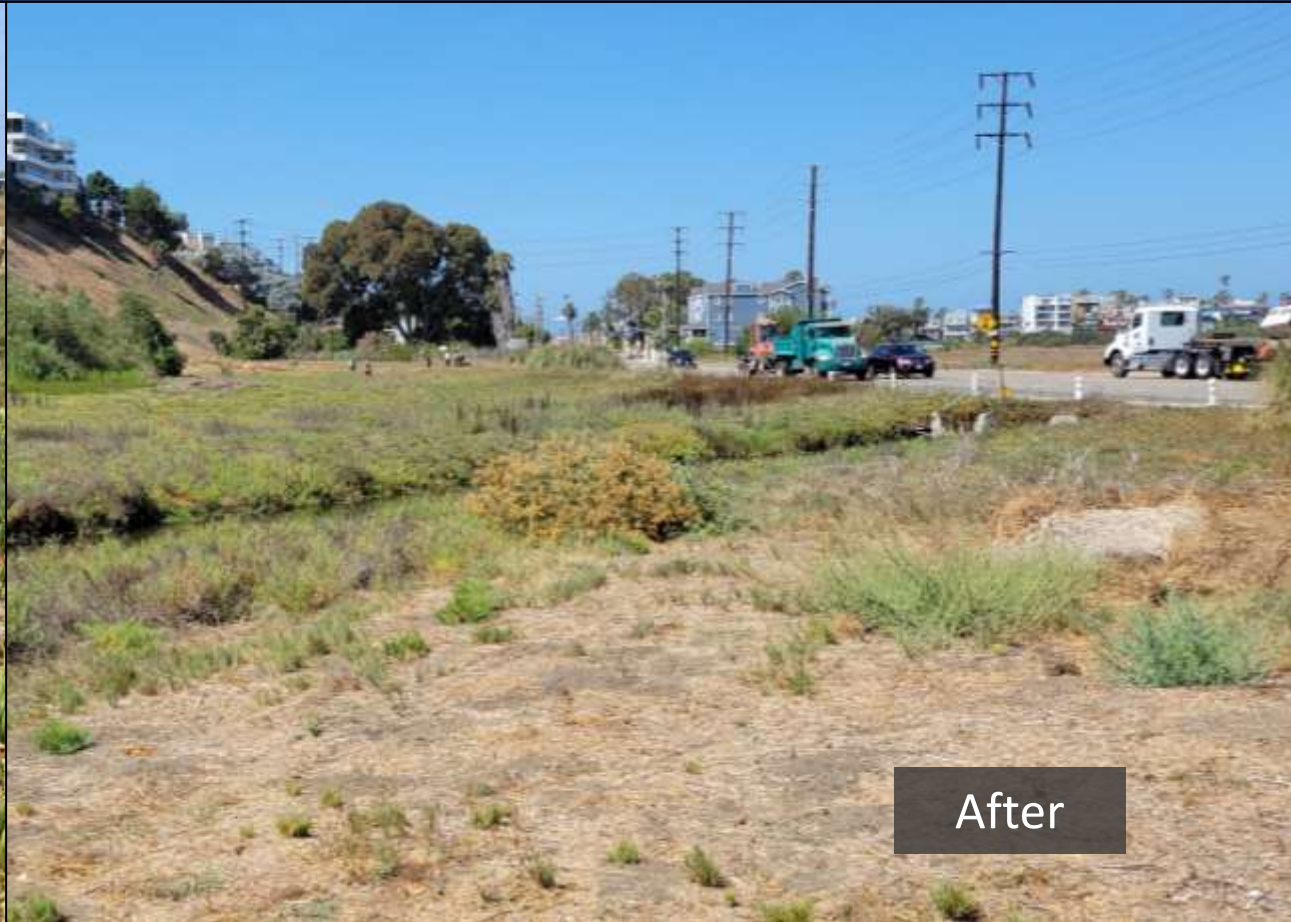


After





Before



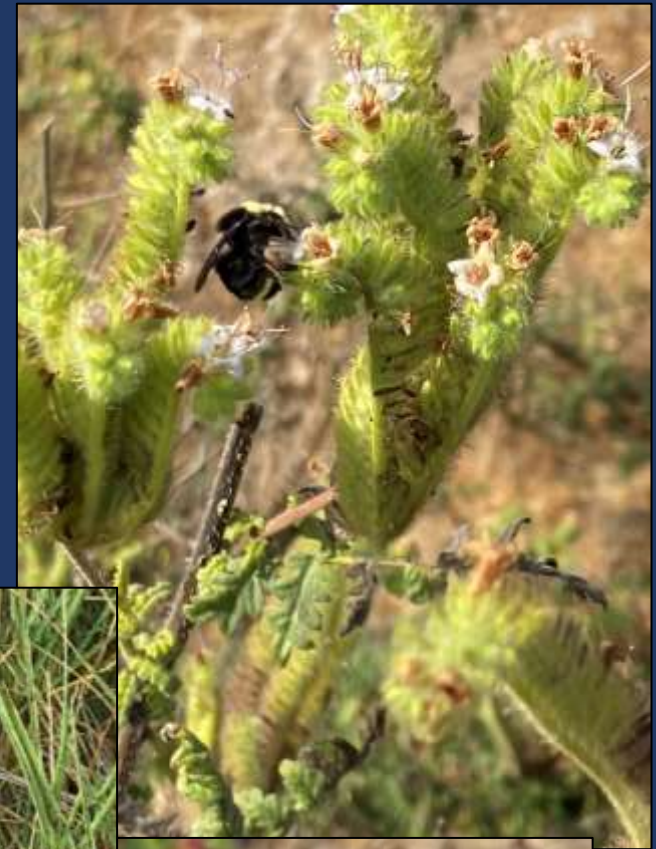
After



After

Before

Pollinators and Wildlife





Next Steps

- Restoration events are public again!
 - August 11 + 25
- Continue ongoing site maintenance and scientific monitoring
- Expand into new iceplant areas

Thank you
volunteers
and partners!





Questions?

kjohnston@santamonicabay.org