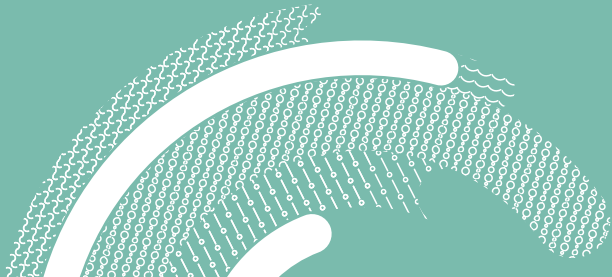




2026 TIDE CALENDAR SOUTHERN CALIFORNIA



**To view the 2026 Tide Calendar
Southern California in Spanish,
please scan the QR code
for a translated virtual version.**

**Para ver el calendario de las mareas
del sur de California 2026 en español,
escanee el código QR.**



2026 TIDE CALENDAR

SOUTHERN CALIFORNIA



TABLE OF CONTENTS

Instructions.....	2
Sewage Management.....	3
Mobile Boat-to-to Services.....	4-5
Keep Pollutants Out of the Water	6-7
Marine Protected Areas.....	8-9
Marine Protected Areas Map.....	10-11
Harbor Maps with Environmental Amenities.....	12-30
Tide Calendars	31-42
2026/2027 Calendar	43
2026 Sunrise & Sunset Table.....	44

THE TIDEBOOK COMPANY

PRINTS *of* TIDES

P.O. Box 2813 • Tybee Island, GA 31328 • 912-472-4373

www.tidelog.com

info@tidelog.com

©2026 Pacific Publishers, LLC D/B/A The Tidebook Company
PRINTED IN THE U.S.A.

IMPORTANT NOTICES: The mariner must be cautioned that during times when weather conditions differ from what is considered average for the area, corresponding differences between predicted heights of tide and those actually observed will be noted. Generally, prolonged onshore winds or a low barometric pressure can produce higher tides than predicted, while the opposite can result in lower tides than those predicted. During times of storm surges or when extreme weather conditions are imminent, it would be prudent for the mariner to keep closely advised by local weather forecasts as they relate to the effects upon tide levels.

HEIGHT DATUM: The datum from which the predicted heights are recorded is the same as that used for the charts of your locality. For the Pacific Coast of the U.S. (including Alaska and Hawaii) that datum is Mean Lower Low Water (MLLW).

PACIFIC DAYLIGHT SAVING TIME: All tables are corrected for daylight saving time.

NO WARRANTY, EXPRESS OR IMPLIED, IS MADE FOR THE ACCURACY OF THE DATA CONTAINED IN THIS BOOKLET

The tide information has been obtained from the National Oceanic and Atmospheric Administration (NOAA). Persons using this book should also consult original sources, including published NOAA charts and tables.

NOTE: The interval on the following pages is High/Low, the solid line depicts a curve fit between the high and low values and approximates the segments between.

NOAA Tide Station used for Tide Calendar:
9410660 - Los Angeles

Tips for Sewage Management

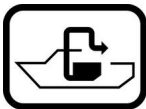
It is against federal and state law to discharge untreated sewage within the three-mile territorial limit (including lakes, rivers, reservoirs, or coastal waters within three miles of shore) or treated sewage into any designated **No Discharge Zone**. Fines up to \$2,000 can be imposed for illegal discharges.

- 👉 **Never discharge** treated or untreated wastes into small bays, harbors, marinas, areas with low tidal flushing, or near recreational swimming, fishing, and shellfish beds.
- 👉 **Get a U.S. Coast Guard approved Marine Sanitation Device** for your boat or consider using a port-a-potty.
- 👉 Even if you have a Type I, II, or III Marine Sanitation Device, consider adopting a **marine composting toilet and/or using landside restrooms** before departing.
- 👉 Prevent accidental discharges by **keeping your “Y” valve properly secured** in the closed position when navigating inland waters or boating less than three miles offshore.
- 👉 **Read labels and use holding tank disinfectants** and deodorizers that do not contain ammonia, chlorine, formaldehyde, or other components that can be harmful to aquatic organisms.
- 👉 Instead of chemical additives, **use enzyme-based treatments** to break down solids and reduce odor.

THE NATIONAL PUMPOUT SYMBOL

Look for this symbol and remember:

Pump it, don't dump it.



Keep Pollutants Out of the Water

BILGE PUMPOUT/CLEANING SERVICES

Suck It Up Sally Mobile Pump Out Service

760.583.4974

Serves: Oceanside Harbor

Other Services Provided: Pump out service and bilge cleanup.

SEWAGE MOBILE PUMPOUT SERVICES

All Bay Marine Service

619.298.4568

Serve: San Diego Bay

www.allbaymarineservice.com | Email: kris@aquariusyacht.com

Dolphin Marine and Pump Out

714.296.8531

Serves: Long Beach Harbor, Huntington Harbour, Newport Harbor

www.gogreenpumpout.org | Email: fishnets8989@hotmail.com

Other Services Provided: Hull cleaning services

Head Pumper

310.321.9943

Serves: Avalon Harbor, Catalina Island

www.headpumpers.com | Email: davefcarleton@gmail.com

VHF Radio: Channel 68

Honey Bucket

310.221.2190

Serves: King Harbor

Email: honeybucketredondo@yahoo.com

Pepe La 'Poo's Pumpout

760.815.7727

Serves: San Diego County

www.pepelapoo.com | Email: service@pepelapoo.com

Popeye's Pumpout Co.

310.822.8312

Serves: Marina del Rey Harbor

www.popeyespumpout.com | Email: service@popeyespumpout.com

Other Services Provided: Emergency bilge pumpout upon request, bilge water cleaning

Royal Flush Pumping Service

888.656.2551

Serves: Los Angeles and Orange Counties

www.pump-out.net | Email: royalflush@onebox.com

Suck It Up Sally Mobile Pump Out Service

760.583.4974

Serves: Oceanside Harbor

The Pumpout

855.PUMPOUT (786.7688)

Serves: Long Beach Harbor, Huntington Harbour, Newport Harbor

www.thepumpout.com | Email: thepumpoutboat@gmail.com

**Scan the QR code with your smartphone for a complete list
of statewide mobile boat-to-boat services:**



**To view the 2026 Tide Calendar
Southern California in Spanish,
please scan the QR code
for a translated virtual version.**

**Para ver el calendario de las
mareas del sur de California 2026
en español, escanee el código QR.**

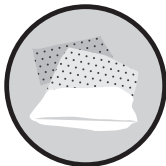


Keep Pollutants Out of the Water



FUELING

Keep oil absorbents on-hand to catch spills from the nozzle, air vent, and fuel filler fitting. Keep fuel-soaked absorbents away from sources of ignition. Once saturated dispose of them as **Hazardous Waste**.



PREVENTIVE ENGINE MAINTENANCE

Choose Coast Guard approved alcohol resistant fuel lines and regularly inspect fuel lines, hoses, hydraulic lines, valves, oil seals, gaskets, and connections for leaks and deterioration. Keep an oil absorbent in the bilge, the engine compartment, and in the drip pan beneath the engine.



BILGE CARE AND PREVENTING OIL SPILLS

Never use soaps or detergents to clean oil or fuel on the water! It is **ILLEGAL** and bad for the environment.



HAZARDOUS WASTE

It is **ILLEGAL** to dispose of Hazardous Waste in the trash. For disposal locations ask your marina staff, call 1 (800) CLEANUP (253-2687), or visit www.bit.ly/4ngHbWS.



TOPSIDE CLEANING

Choose water-based, phosphate-free, chlorine-free, biodegradable, and less-toxic products.



PLASTICS AND TRASH

Ditch single-use disposables and choose to reuse.



HULL MAINTENANCE

Frequent non-abrasive cleaning (ex. soft cloth, fleece mitt, soft carpet, or a long bristled soft brush) can minimize marine growth and extend the life of bottom paints.



GREYWATER

Soaps from boat sinks, showers, and dishwashers are more harmful than those at home because they don't get treated in a sanitary system. As much as possible, do your washing at home and if needed for your boat, choose phosphate-free, biodegradable, and less-toxic products.

Marine Protected Area Information

WHAT IS A MARINE PROTECTED AREA (MPA)?

A marine area designated via public processes to protect and conserve marine life, marine habitats, and cultural resources by prohibiting or limiting the take of marine resources. MPAs are recognized tools for protecting, enhancing, and restoring marine life and allow for interactions between both fished and unfished species to occur in a natural setting.

TYPES OF PROTECTED AREAS (INCLUDING MPAS)

- **State Marine Reserve (SMR):** Most common and restrictive type of MPA. Fishing is not allowed.
- **State Marine Conservation Area (SMCA):** Less restrictive than SMRs and may allow some recreational or commercial fishing with certain gear. See www.wildlife.ca.gov/MPAs.
- **No-Take SMCA:** Take of any living, geological, or culture resource in the area is prohibited
- **State Marine Park (SMP):** Allows some recreational take but does not allow commercial take.
- **State Marine Recreational Management Area (SMRMA):** Some take, and legal waterfowl hunting may be allowed, but other activities and take may be prohibited.
- **Special Closure:** Prohibits or restricts access in waters near seabird rookeries or resting and breeding sites for marine mammals. May prohibit boating and anchoring to protect sensitive species.
- **Federal MPA:** There are several types of federal MPAs and a variety of government programs, agencies, and legislation manage, monitor, or establish them in U.S. waters. Please scan the QR for details.
- **National Marine Sanctuary:** Prohibits pollution discharges, disturbing wildlife, introducing non-native species, commercial offshore oil + gas extraction, altering the seabed, and other related activities. Please scan the QR code below for specifications per sanctuary.

LEARN MORE

Scan the QR code with your smartphone for more information on the specific regulations and GPS coordinates for each MPA:



HOW DO MPAS AFFECT BOATERS?

- Boating and anchoring in an MPA is allowed unless specifically prohibited by regulations for a particular MPA.
- Transiting through MPAs is allowed, even with fish on board; just make sure your fishing gear is stowed.
- If you do fish, learn where MPAs are. Many SMCAs allow recreational fishing for pelagic fish with certain gear. And, while fishing is not allowed within SMRs, you may benefit from them when you fish a nearby reef.
- There are other fishing rules and regulations, so be informed and plan your fishing trip before you leave home.

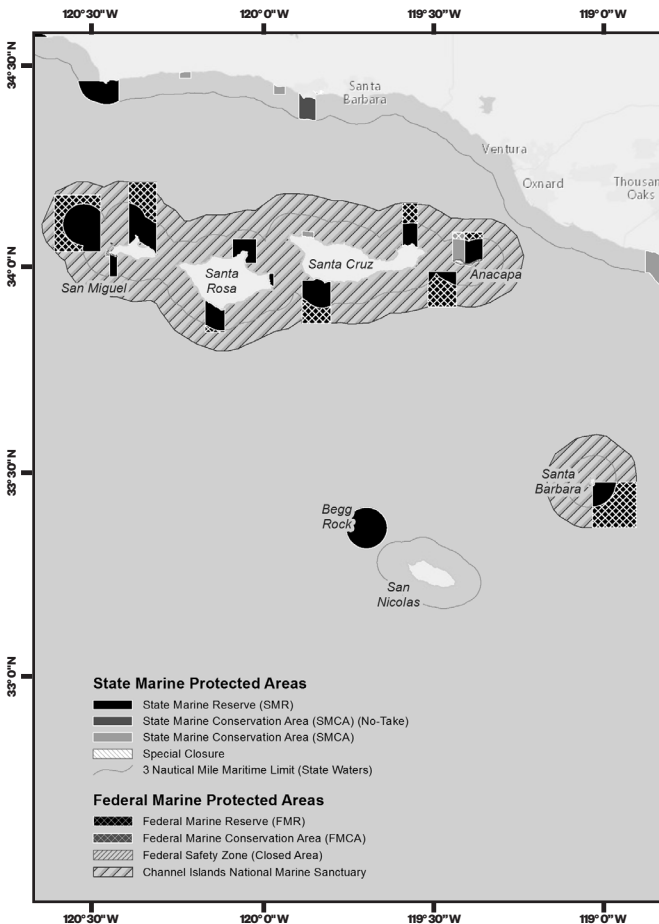
WILDLIFE HOTLINES

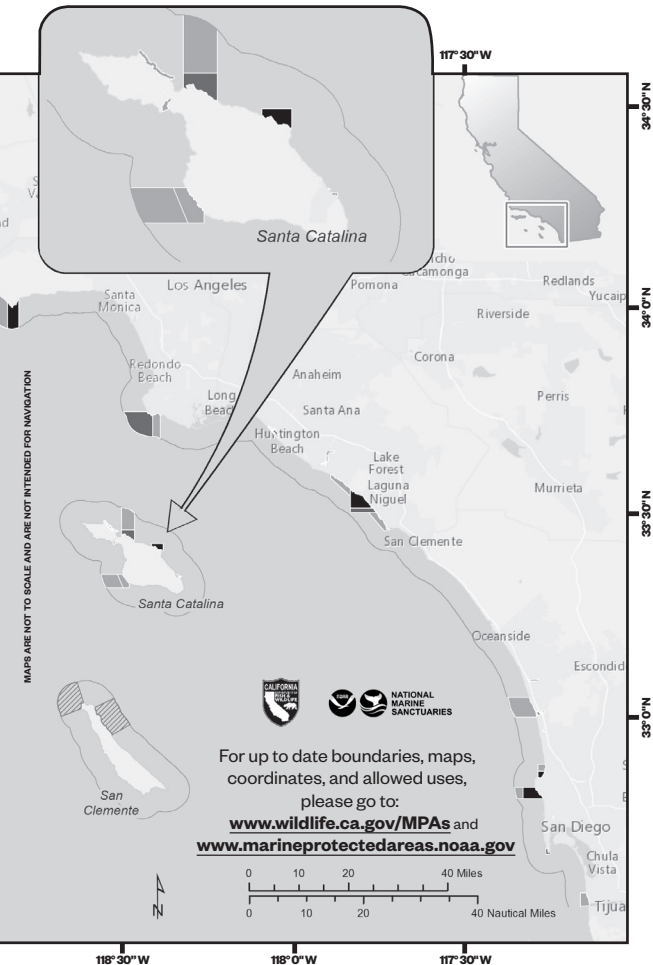
- **CA Wildlife Center**
310.458.WILD (310.458.9453)
- **Marine Mammal Center**
415.289.SEAL (415.289.7325)
- **Report Poachers and Polluters**
Report disturbances and poaching to CalTip at [888.334.2258](tel:888.334.2258), or text “CAL-TIP” followed by a space and the message, to [847411](tel:847411) ([tip411](tel:tip411))

TIPS FOR BOATERS TO PREVENT MARINE WILDLIFE DISTURBANCE

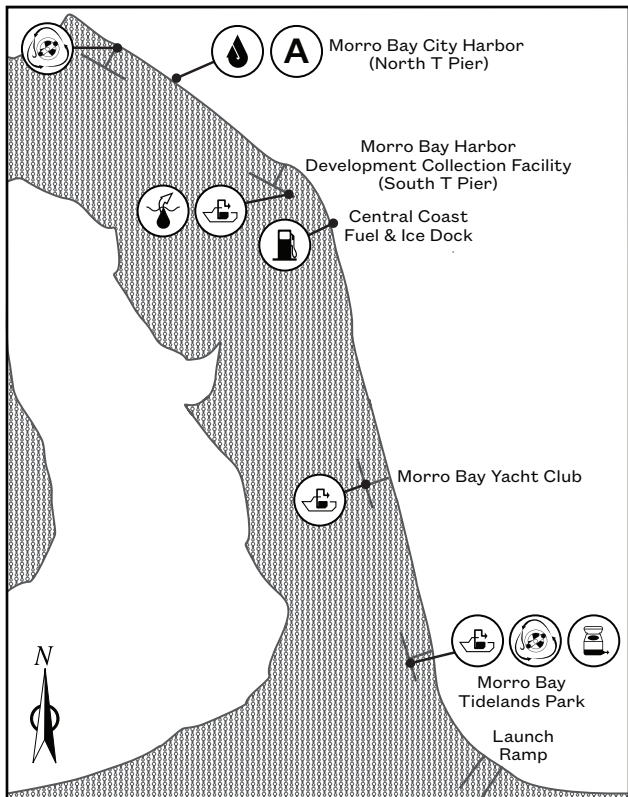
- Stay 1,000 feet (3 football fields) from cliffs, offshore rocks, and islands.
- All marine mammals are protected under the Marine Mammal Protection Act.
- Stay at least 100 yards away from whales and at least 50 yards away from dolphins, seals, and sea lions.
- If you see bird heads bobbing, calling, fluttering, or flying away, you are too close.
- Paddle, sail, or motor around rather than through groups of birds on the water.
- Properly dispose of fishing line— look for fishing line recycling stations (see harbor maps), cover bait, and use barbless hooks + artificial lures.
- Do not feed wildlife or attract birds by throwing bait or fish scraps overboard.
- State and federal laws protect seabirds and other marine life from harassment.

SOUTHERN CALIFORNIA STATE AND FEDERAL MARINE PROTECTED AREAS





MORRO BAY



MAPS ARE NOT TO SCALE AND NOT INTENDED FOR NAVIGATION
PLEASE CONTACT FACILITIES TO VERIFY SERVICES AND HOURS



**DUMP
STATION**



**OIL
BILGE
PUMPOUT**



**OIL
DISTRIBUTION
AND/OR
COLLECTION**



FUEL



**OIL
RECYCLING**

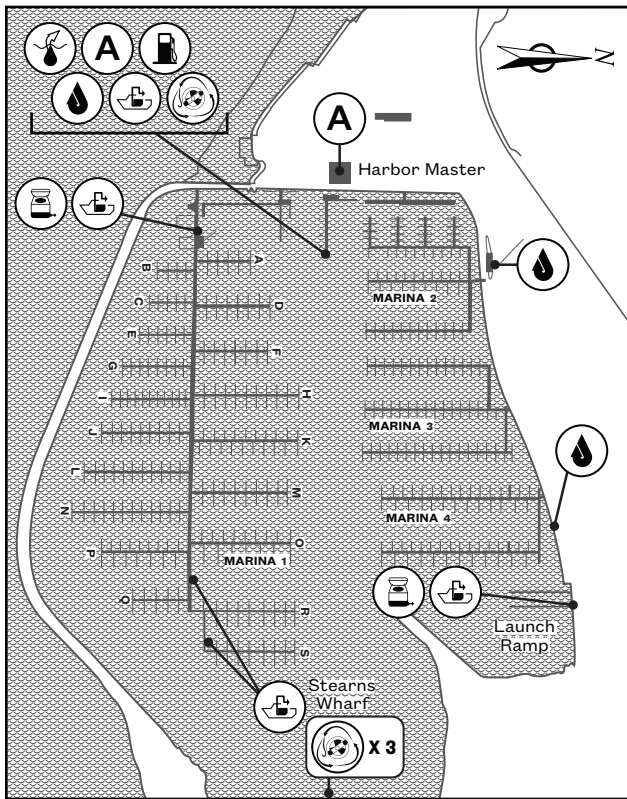


**SEWAGE
PUMPOUT**



**FISHING
LINE
RECYCLING**

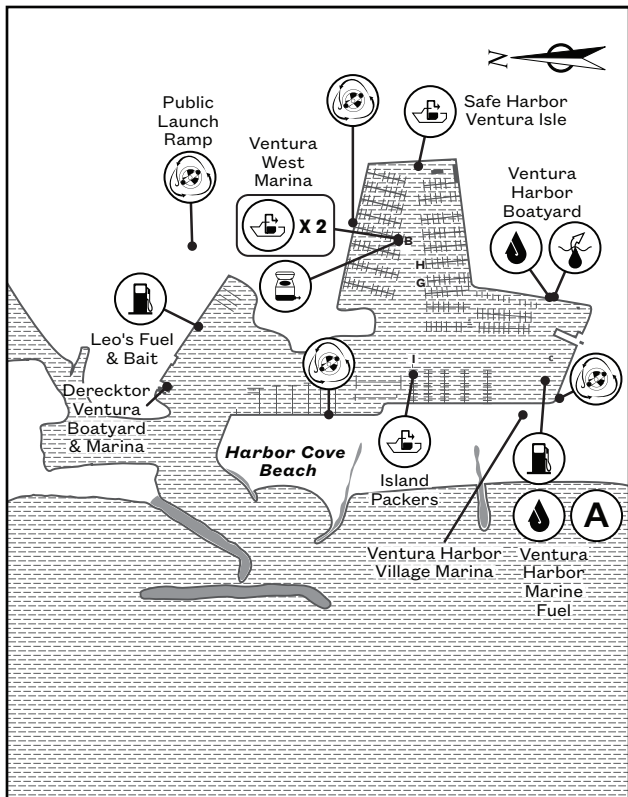
SANTA BARBARA



MAPS ARE NOT TO SCALE AND NOT INTENDED FOR NAVIGATION
PLEASE CONTACT FACILITIES TO VERIFY SERVICES AND HOURS



VENTURA



MAPS ARE NOT TO SCALE AND NOT INTENDED FOR NAVIGATION
PLEASE CONTACT FACILITIES TO VERIFY SERVICES AND HOURS



**DUMP
STATION**



**OIL
BILGE
PUMPOUT**



**OIL
ABSORBENT
DISTRIBUTION
AND/OR
COLLECTION**



FUEL



**OIL
RECYCLING**

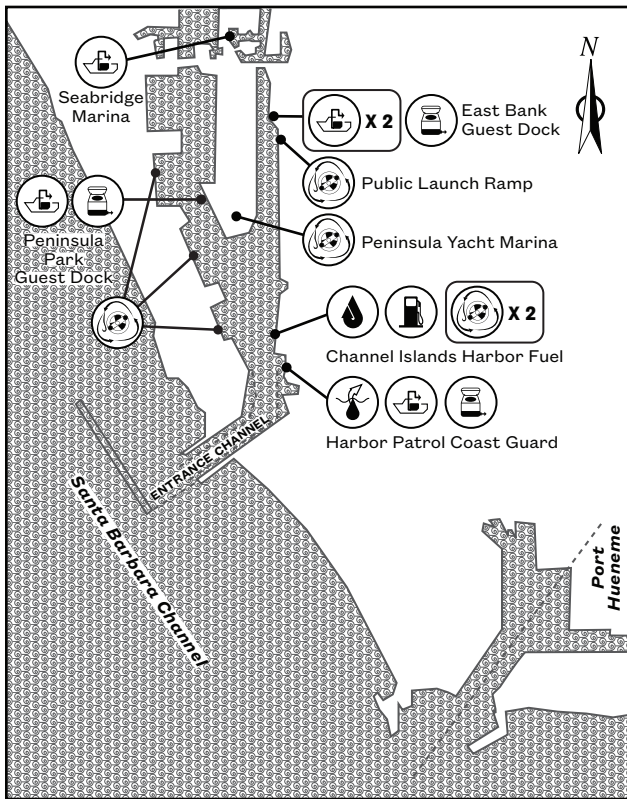


**SEWAGE
PUMPOUT**



**FISHING
LINE
RECYCLING**

CHANNEL ISLANDS



MAPS ARE NOT TO SCALE AND NOT INTENDED FOR NAVIGATION
PLEASE CONTACT FACILITIES TO VERIFY SERVICES AND HOURS



**DUMP
STATION**



**OIL
BILGE
PUMP/OUT**



**OIL
ABSORBENT
DISTRIBUTION
AND/OR
COLLECTION**



FUEL



**OIL
RECYCLING**

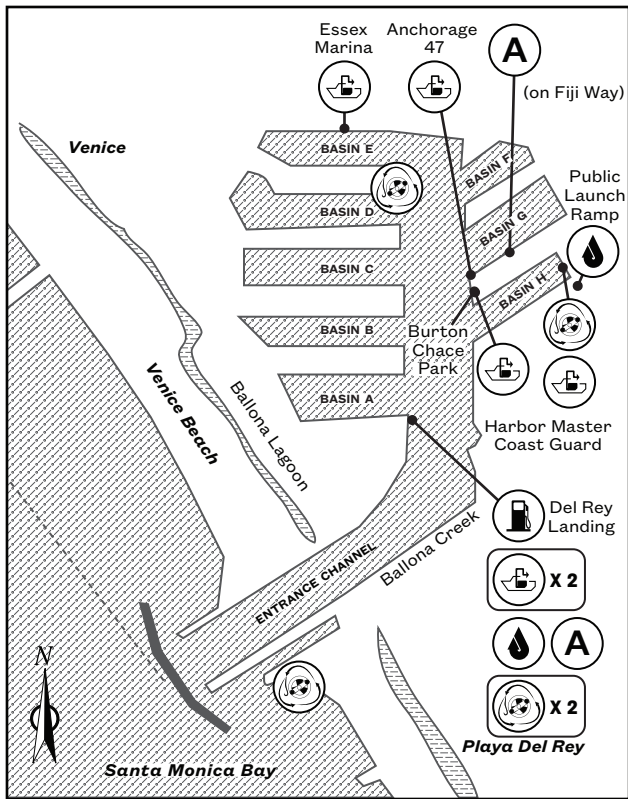


**SEWAGE
PUMP/OUT**



**FISHING
LINE
RECYCLING**

MARINA DEL REY



MAPS ARE NOT TO SCALE AND NOT INTENDED FOR NAVIGATION
PLEASE CONTACT FACILITIES TO VERIFY SERVICES AND HOURS



**OIL
ABSORBENT
DISTRIBUTION
AND/OR
COLLECTION**



FUEL



**OIL
RECYCLING**

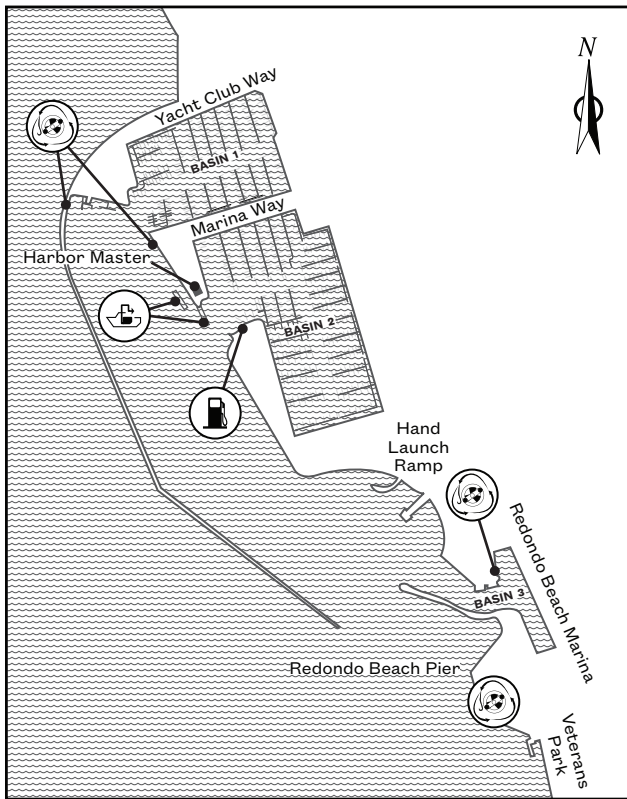


**SEWAGE
PUMPOUT**



**FISHING
LINE
RECYCLING**

KING HARBOR



MAPS ARE NOT TO SCALE AND NOT INTENDED FOR NAVIGATION
PLEASE CONTACT FACILITIES TO VERIFY SERVICES AND HOURS



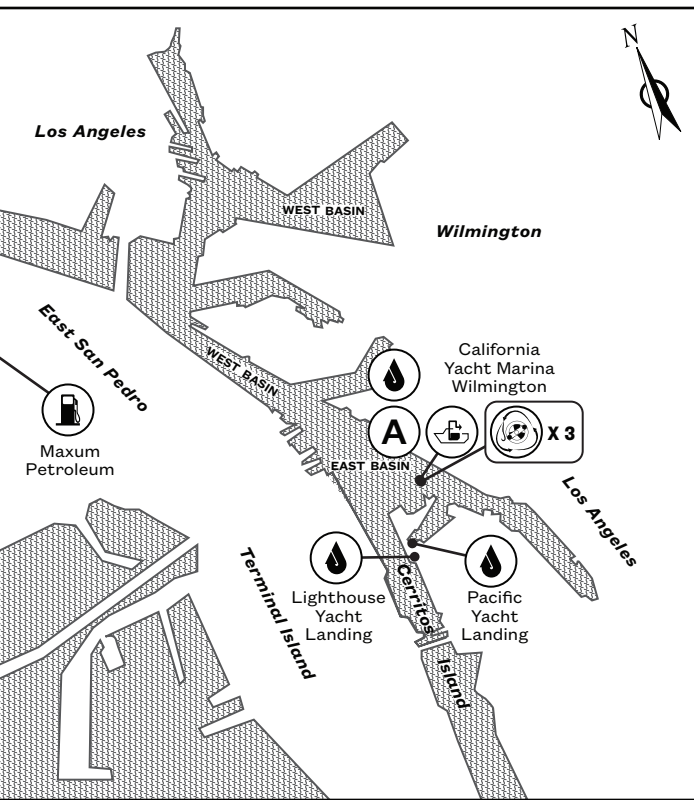
FUEL



**SEWAGE
PUMPOUT**



**FISHING
LINE
RECYCLING**



MAPS ARE NOT TO SCALE AND NOT INTENDED FOR NAVIGATION
PLEASE CONTACT FACILITIES TO VERIFY SERVICES AND HOURS



**OIL
ABSORBENT
DISTRIBUTION
AND/OR
COLLECTION**



FUEL



**OIL
RECYCLING**

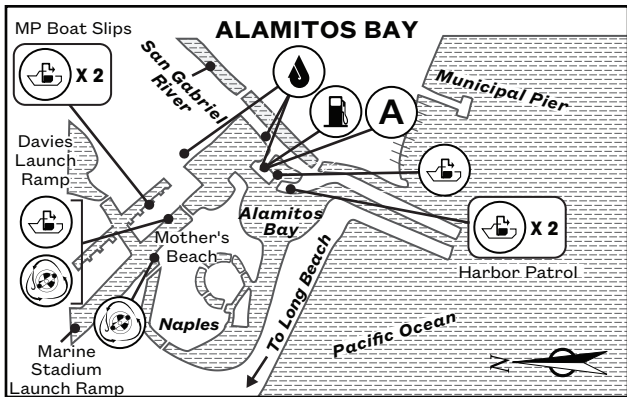
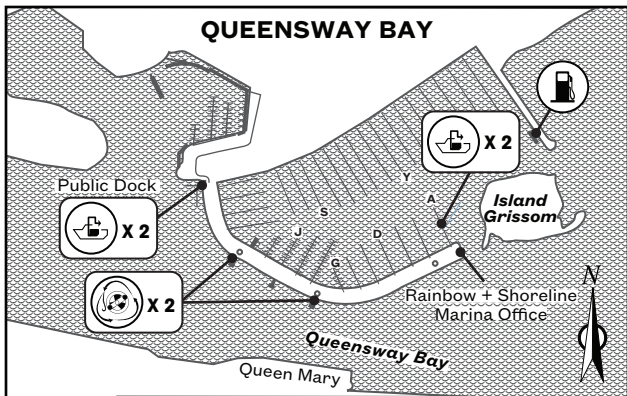







**SEWAGE
PUMPOUT**



**FISHING
LINE
RECYCLING**

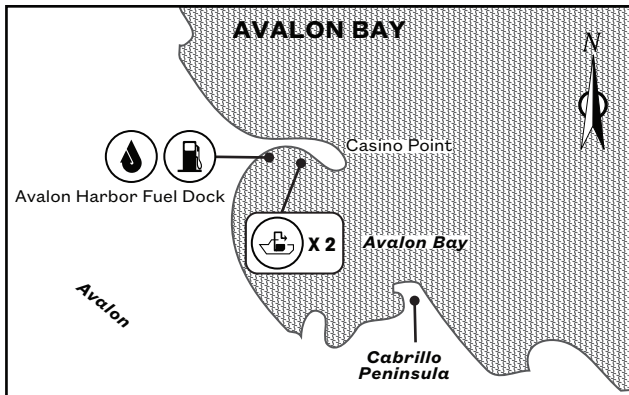
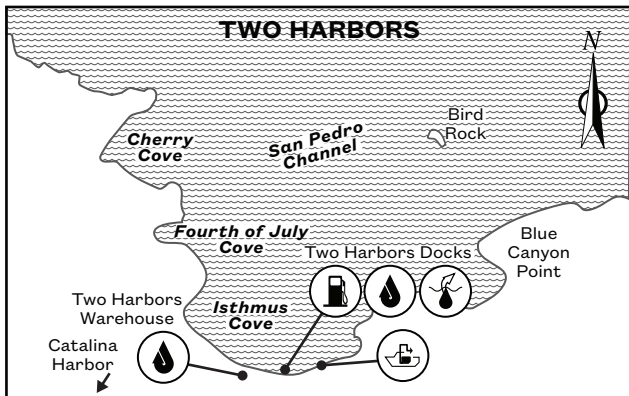
LONG BEACH



- 
A
OIL ABSORBENT DISTRIBUTION AND/OR COLLECTION
- 
FUEL
- 
OIL RECYCLING
- 
SEWAGE PUMPOUT
- 
FISHING LINE RECYCLING

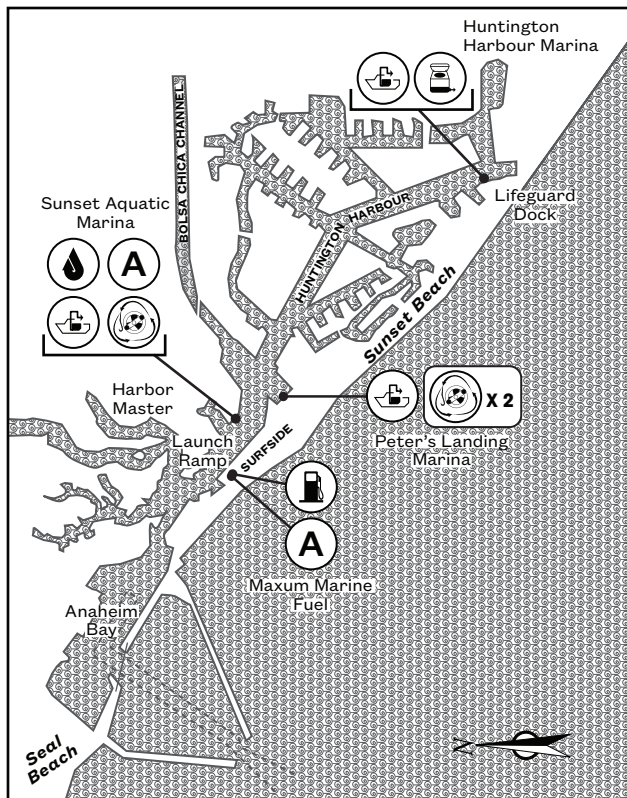
MAPS ARE NOT TO SCALE AND NOT INTENDED FOR NAVIGATION
 PLEASE CONTACT FACILITIES TO VERIFY SERVICES AND HOURS

SANTA CATALINA ISLAND



MAPS ARE NOT TO SCALE AND NOT INTENDED FOR NAVIGATION
PLEASE CONTACT FACILITIES TO VERIFY SERVICES AND HOURS

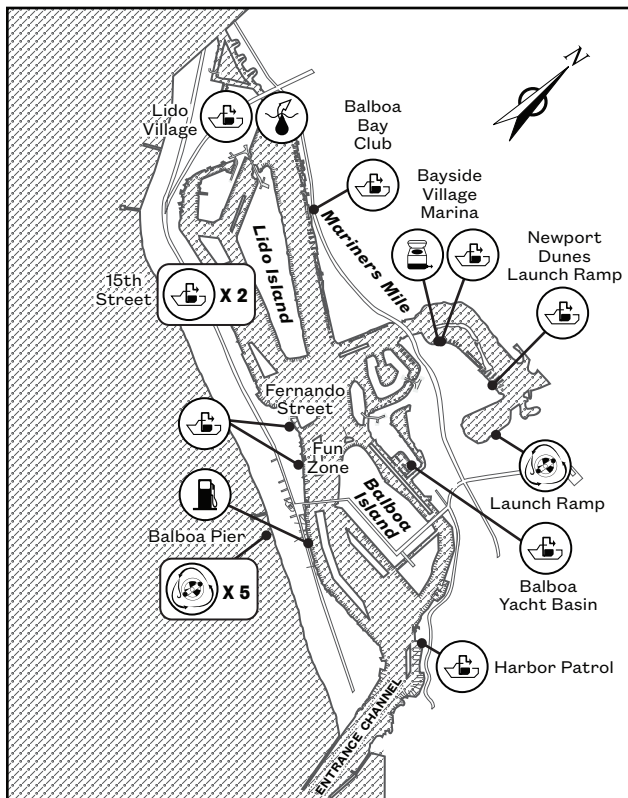
HUNTINGTON HARBOUR



MAPS ARE NOT TO SCALE AND NOT INTENDED FOR NAVIGATION
PLEASE CONTACT FACILITIES TO VERIFY SERVICES AND HOURS



NEWPORT HARBOR



MAPS ARE NOT TO SCALE AND NOT INTENDED FOR NAVIGATION
PLEASE CONTACT FACILITIES TO VERIFY SERVICES AND HOURS



**DUMP
STATION**



**OIL
BILGE
PUMPOUT**



FUEL

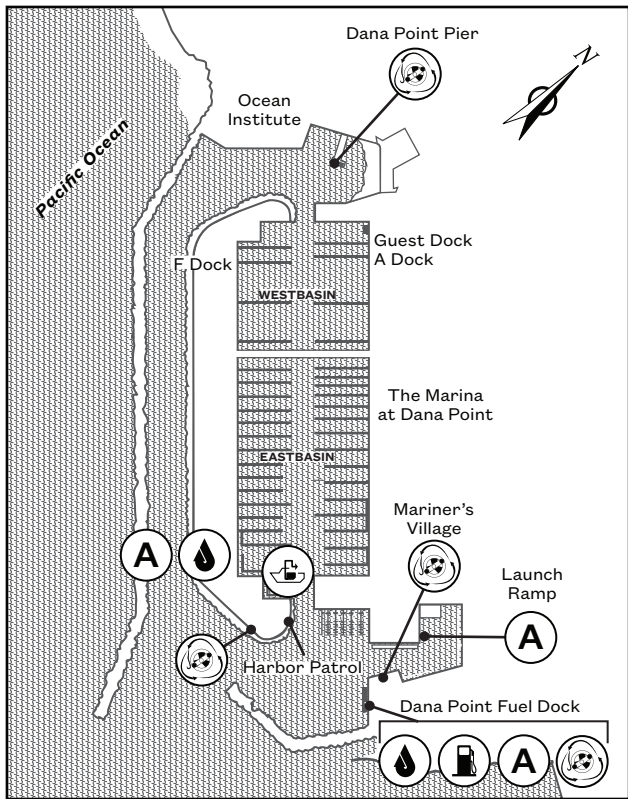


**SEWAGE
PUMPOUT**



**FISHING
LINE
RECYCLING**

DANA POINT



MAPS ARE NOT TO SCALE AND NOT INTENDED FOR NAVIGATION
PLEASE CONTACT FACILITIES TO VERIFY SERVICES AND HOURS



**OIL
ABSORBENT
DISTRIBUTION
AND/OR
COLLECTION**



FUEL



**OIL
RECYCLING**

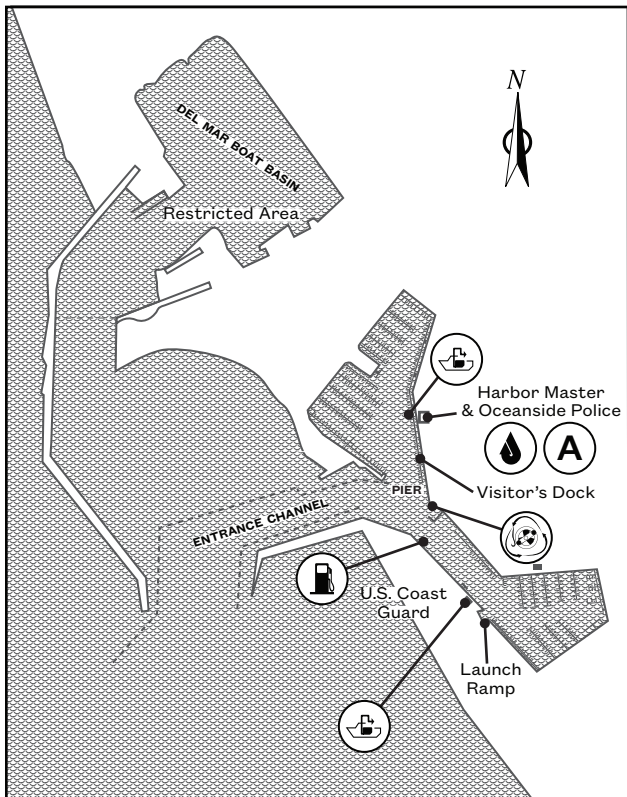


**SEWAGE
PUMPOUT**



**FISHING
LINE
RECYCLING**

OCEANSIDE



MAPS ARE NOT TO SCALE AND NOT INTENDED FOR NAVIGATION
PLEASE CONTACT FACILITIES TO VERIFY SERVICES AND HOURS



**OIL
ABSORBENT
DISTRIBUTION
AND/OR
COLLECTION**



FUEL



**OIL
RECYCLING**

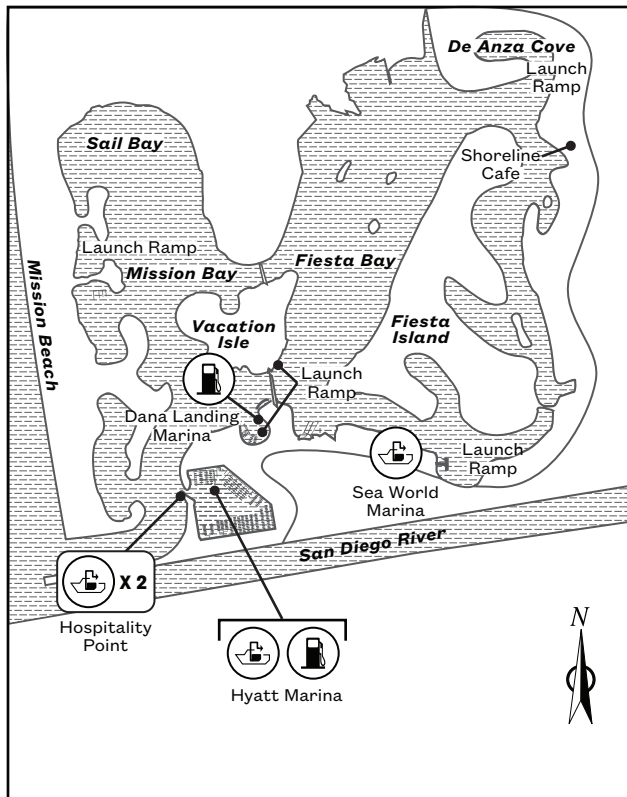


**SEWAGE
PUMPOUT**



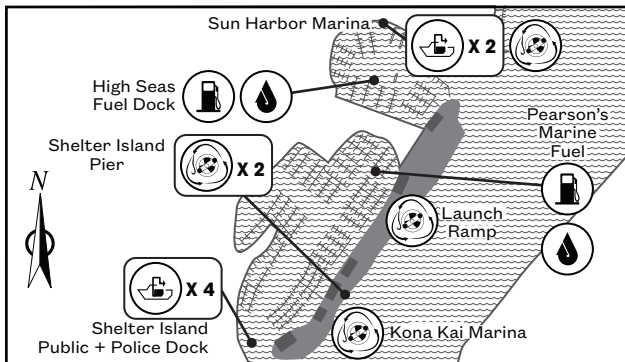
**FISHING
LINE
RECYCLING**

MISSION BAY

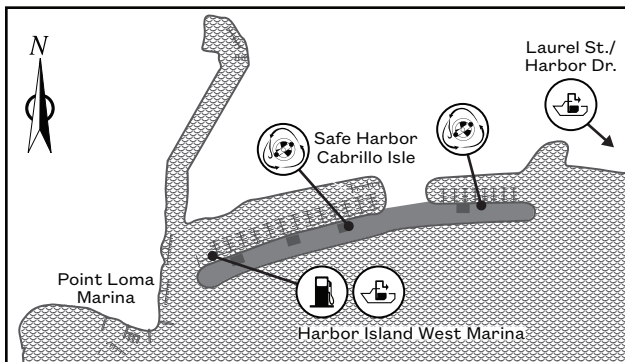


MAPS ARE NOT TO SCALE AND NOT INTENDED FOR NAVIGATION
PLEASE CONTACT FACILITIES TO VERIFY SERVICES AND HOURS

SHELTER ISLAND



HARBOR ISLAND



FUEL



OIL RECYCLING



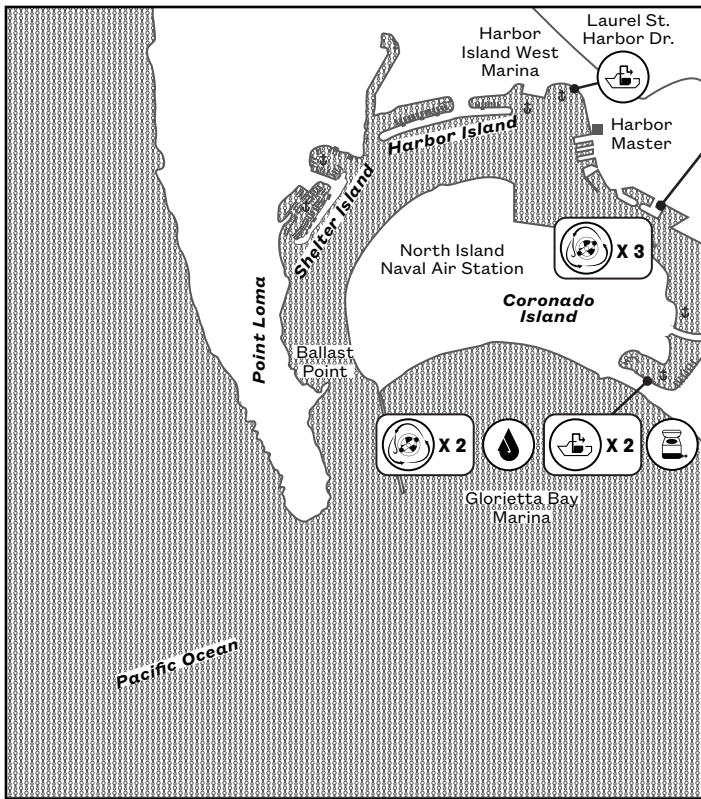
SEWAGE PUMPOUT

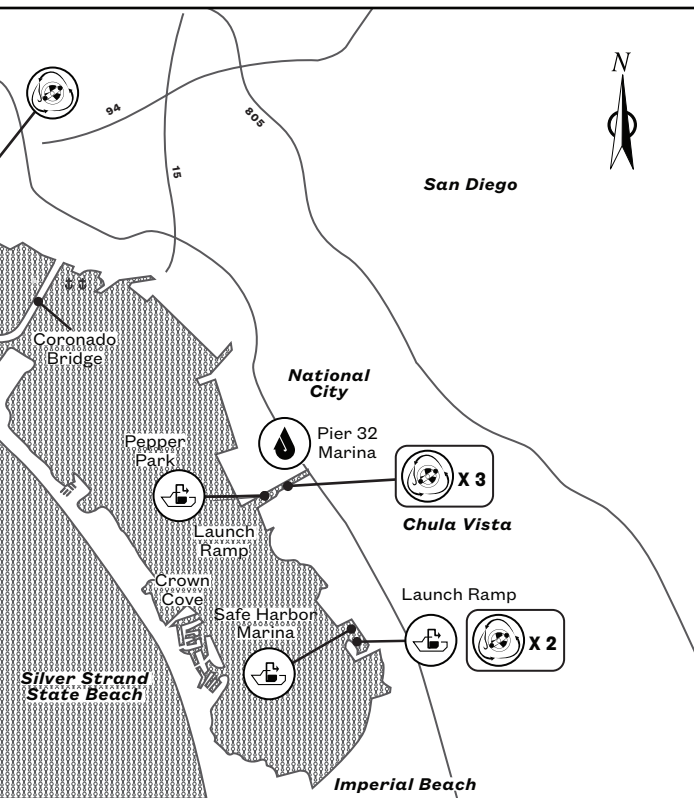


FISHING LINE RECYCLING

MAPS ARE NOT TO SCALE AND NOT INTENDED FOR NAVIGATION
PLEASE CONTACT FACILITIES TO VERIFY SERVICES AND HOURS

SAN DIEGO

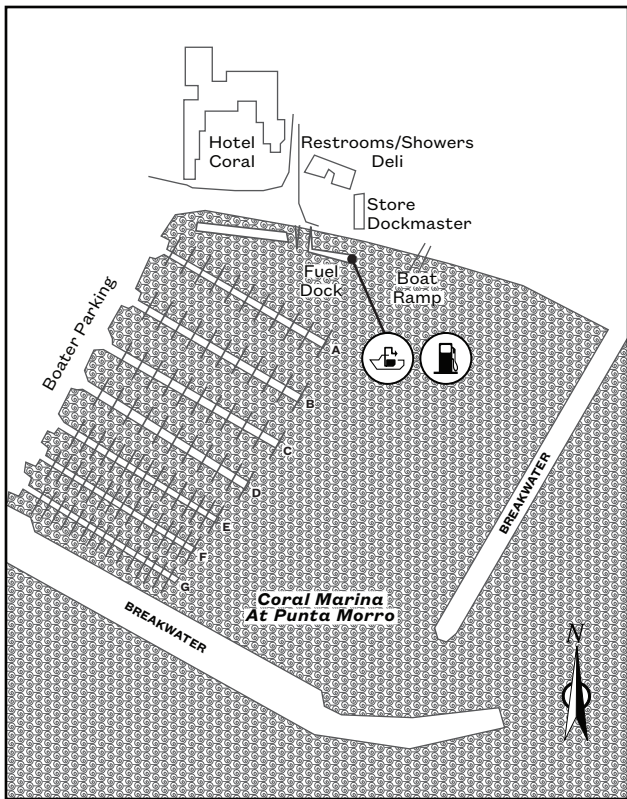




MAPS ARE NOT TO SCALE AND NOT INTENDED FOR NAVIGATION
PLEASE CONTACT FACILITIES TO VERIFY SERVICES AND HOURS



CORAL MARINA



MAPS ARE NOT TO SCALE AND NOT INTENDED FOR NAVIGATION
PLEASE CONTACT FACILITIES TO VERIFY SERVICES AND HOURS

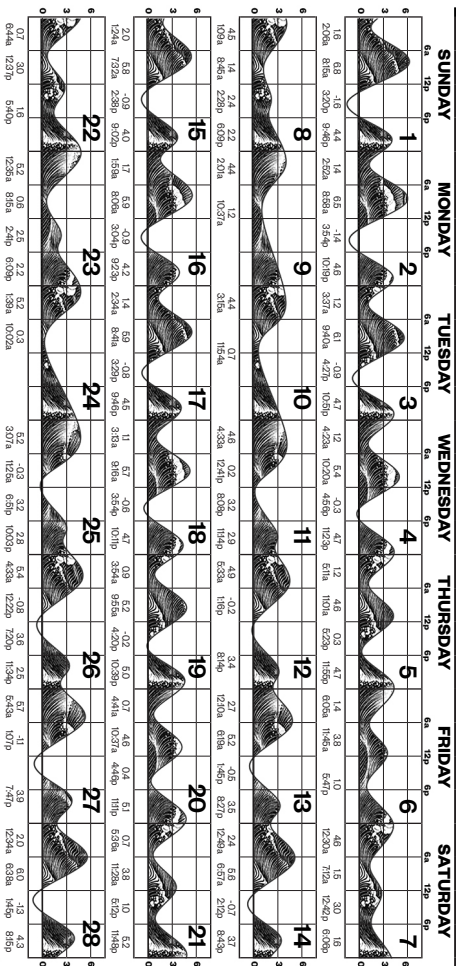


FUEL



SEWAGE
PUMPOUT

FEBRUARY 2026



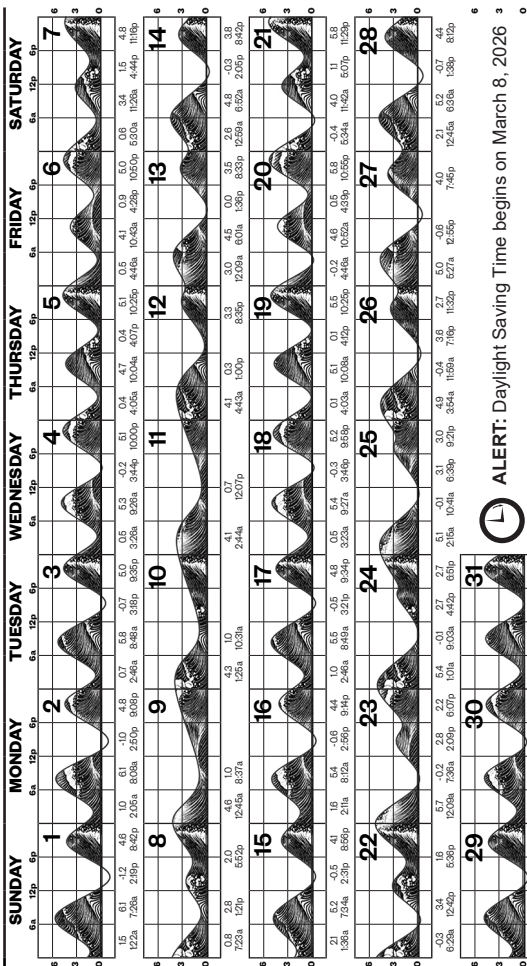
○ Full Moon: Feb 1

● New Moon: Feb 17

● Last Quarter: Feb 9

● First Quarter: Feb 23

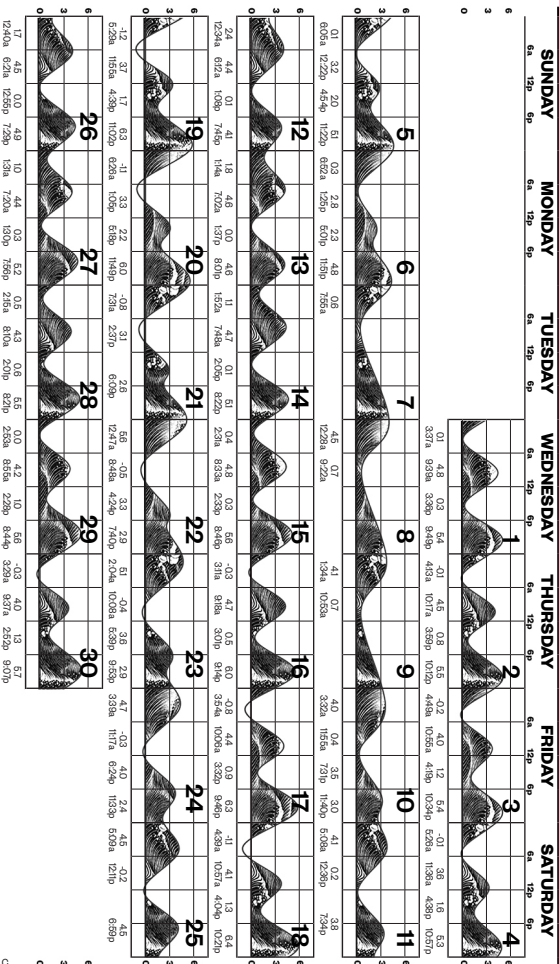
MARCH 2026



- Full Moon: Mar 3
- Last Quarter: Mar 11
- New Moon: Mar 18
- First Quarter: Mar 25

March 20 = Spring Equinox

APRIL 2026



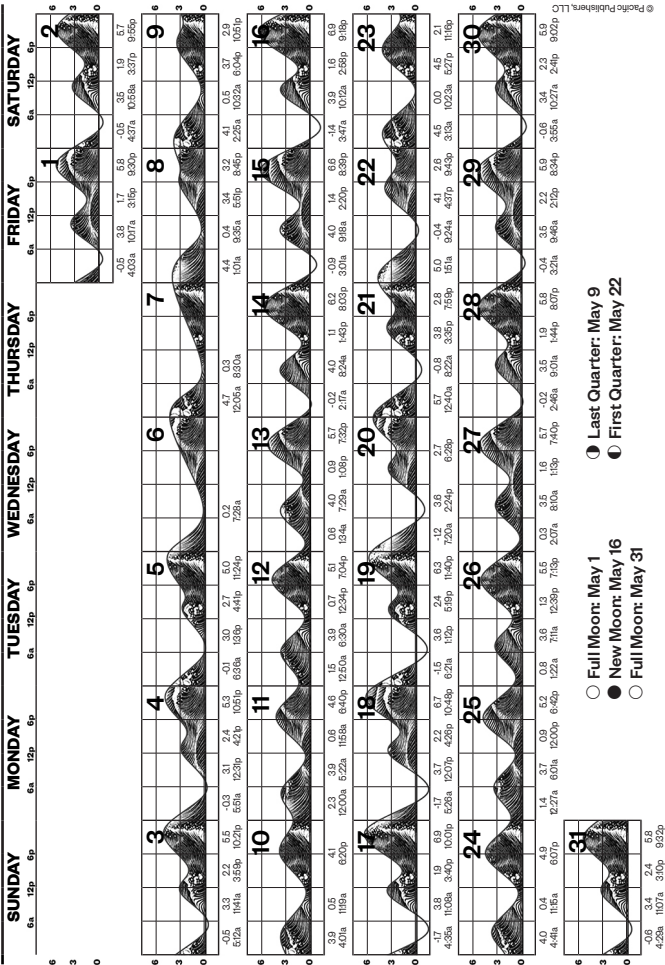
● Full Moon: Apr 1

● New Moon: Apr 17

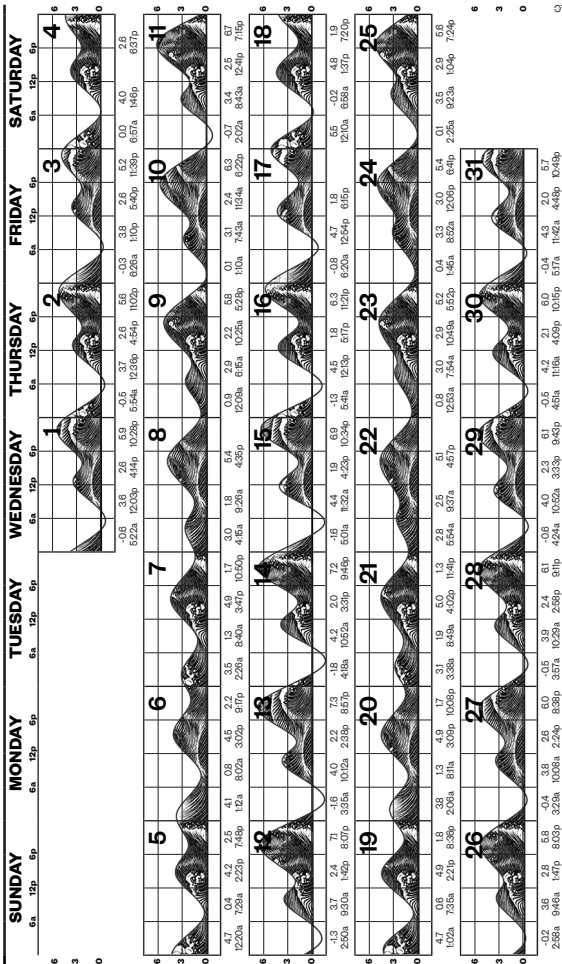
● Last Quarter: Apr 10

● First Quarter: Apr 23

MAY 2026



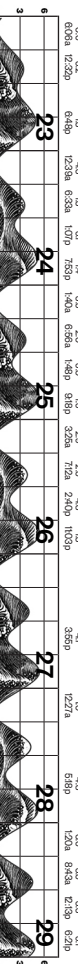
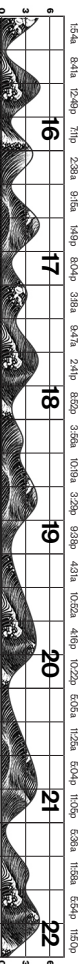
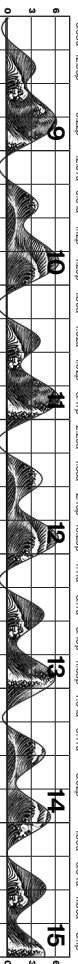
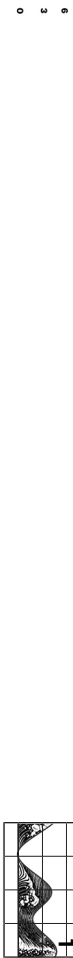
JULY 2026



- Last Quarter: Jul 7
- New Moon: Jul 14
- First Quarter: Jul 20
- Full Moon: Jul 29

AUGUST 2026

SUNDAY 12p 6p **MONDAY** 6a 12p 6p **TUESDAY** 6a 12p 6p **WEDNESDAY** 6a 12p 6p **THURSDAY** 6a 12p 6p **FRIDAY** 6a 12p 6p **SATURDAY** 6a 12p 6p

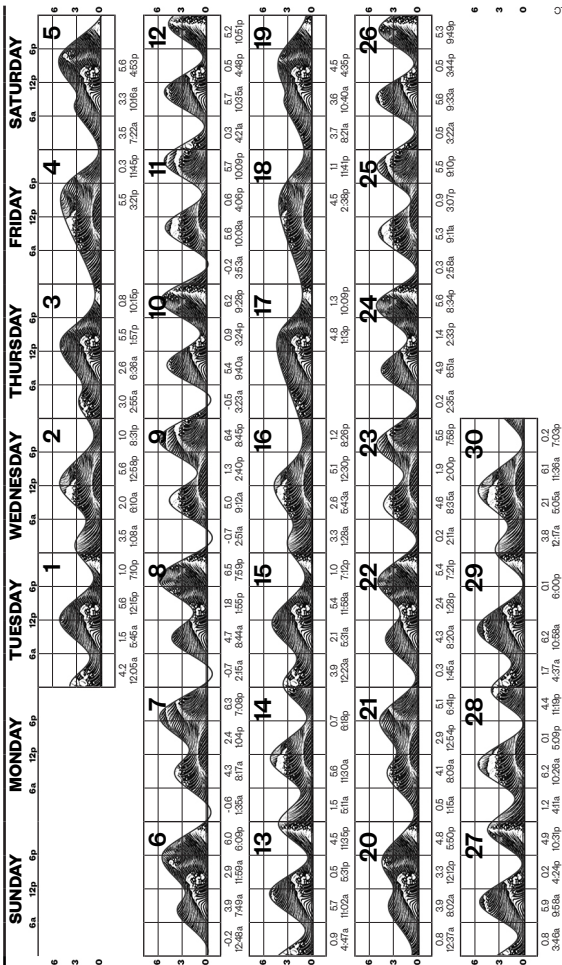


● New Moon: Aug 12
○ Full Moon: Aug 27

Last Quarter: Aug 6
First Quarter: Aug 19

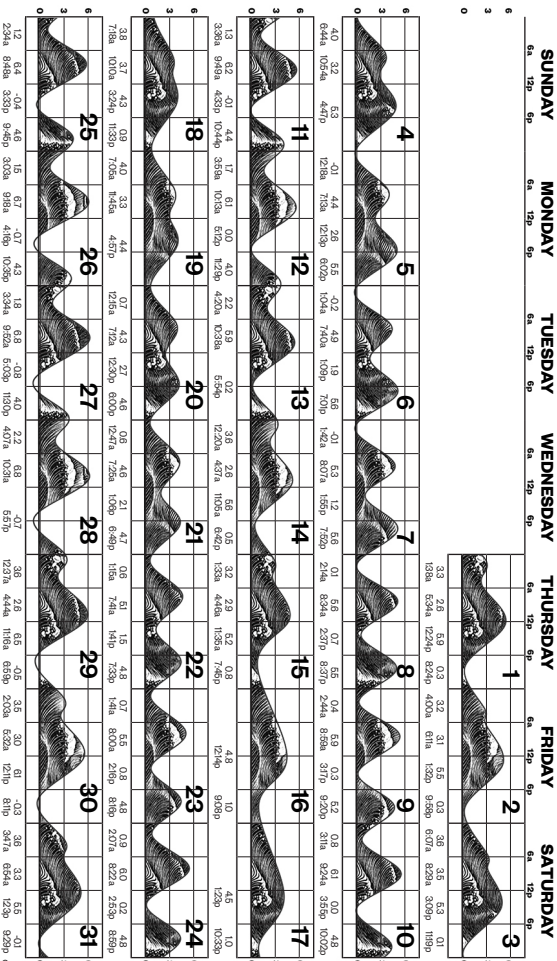
0.6 5.2 1.3 4.3 1.3 5.1 1.4 3.5 2.0 5.0 1.5 2.9 2.6 4.8 1.3 4.7 1.0 12.27a 4.8 4.8 0.6 3.8 3.3 5.1 1.8a 8.95a 1.09p 7.09p 2.29a 9.09a 1.43p 7.47p 2.57a 9.29a 2.16p 8.21p 3.21a 9.43a 2.48p 8.54p 3.45a 10.02a 3.22p 9.27p 4.09a 10.24a 3.57p 10.07p 4.33a 10.47a 4.38p 10.57p 0.6 5.3 1.0 4.8 0.9 5.5 1.0 4.56a 1.13a 5.18p 1.18p 5.20a 1.44a 6.09p

SEPTEMBER 2026



- Last Quarter: Sep 4
- New Moon: Sep 10
- First Quarter: Sep 18
- Full Moon: Sep 26

OCTOBER 2026



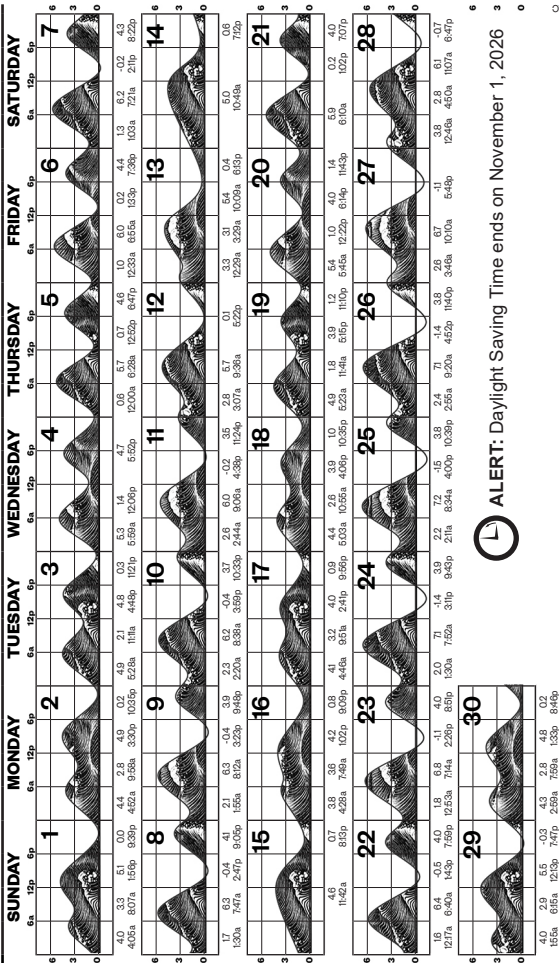
● Last Quarter: Oct 3

● First Quarter: Oct 18

● New Moon: Oct 10

○ Full Moon: Oct 25

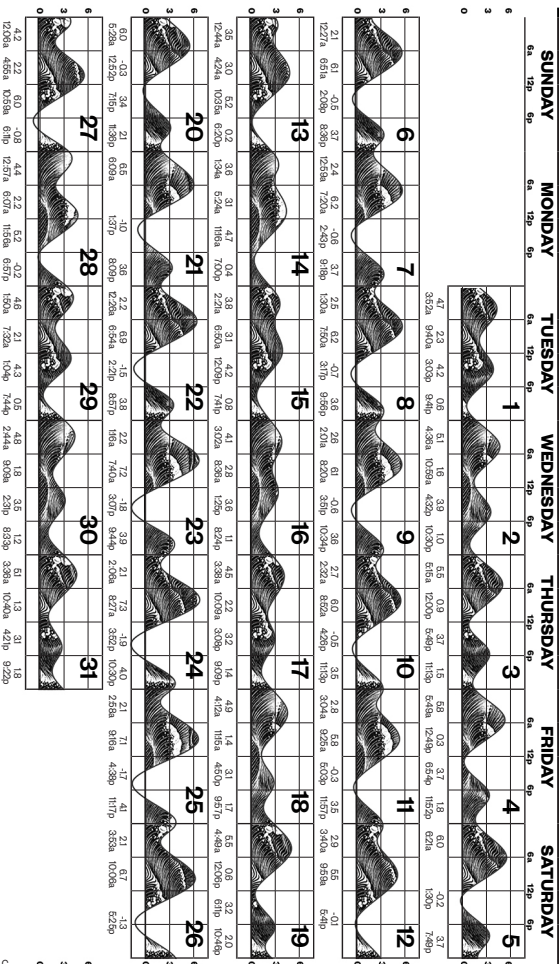
NOVEMBER 2026



ALERT: Daylight Saving Time ends on November 1, 2026

- Last Quarter: Nov 1
- First Quarter: Nov 16
- New Moon: Nov 9
- Full Moon: Nov 24

DECEMBER 2026



- Last Quarter: Dec 1
- First Quarter: Dec 16
- Last Quarter: Dec 30
- New Moon: Dec 8
- Full Moon: Dec 23

December 21 = Winter Solstice

2026

JANUARY		FEBRUARY		MARCH													
S	M	T	W	T	F	S	M	T	W	T	F	S	M	T	W	T	F
1	2	3				1	2	3	4	5	6	7	8	9	10	11	12
4	5	6	7	8	9	10	11	12	13	14	15	16	17	18	19	20	21
11	12	13	14	15	16	17	18	19	20	21	22	23	24	25	26	27	28
18	19	20	21	22	23	24	25	26	27	28	29	30	31				

25262728293031

APRIL		MAY		JUNE													
S	M	T	W	T	F	S	M	T	W	T	F	S	M	T	W	T	F
1	2	3	4			1	2	3	4	5	6	7	8	9	10	11	12
5	6	7	8	9	10	11	12	13	14	15	16	17	18	19	20	21	22
12	13	14	15	16	17	18	19	20	21	22	23	24	25	26	27	28	29
19	20	21	22	23	24	25	26	27	28	29	30	31					

45

JULY		AUGUST		SEPTEMBER													
S	M	T	W	T	F	S	M	T	W	T	F	S	M	T	W	T	F
1	2	3	4			1	2	3	4	5	6	7	8	9	10	11	12
5	6	7	8	9	10	11	12	13	14	15	16	17	18	19	20	21	22
12	13	14	15	16	17	18	19	20	21	22	23	24	25	26	27	28	29
19	20	21	22	23	24	25	26	27	28	29	30	31					

262728293031

OCTOBER		NOVEMBER		DECEMBER													
S	M	T	W	T	F	S	M	T	W	T	F	S	M	T	W	T	F
1	2	3	4	5	6	7	8	9	10	11	12	13	14	15	16	17	18
4	5	6	7	8	9	10	11	12	13	14	15	16	17	18	19	20	21
11	12	13	14	15	16	17	18	19	20	21	22	23	24	25	26	27	28
18	19	20	21	22	23	24	25	26	27	28	29	30	31				

25262728293031

2027

JANUARY		FEBRUARY		MARCH													
S	M	T	W	T	F	S	M	T	W	T	F	S	M	T	W	T	F
1	2	3	4	5	6	7	8	9	10	11	12	13	14	15	16	17	18
3	4	5	6	7	8	9	10	11	12	13	14	15	16	17	18	19	20
10	11	12	13	14	15	16	17	18	19	20	21	22	23	24	25	26	27
17	18	19	20	21	22	23	24	25	26	27	28	29	30	31			

31

APRIL		MAY		JUNE													
S	M	T	W	T	F	S	M	T	W	T	F	S	M	T	W	T	F
1	2	3	4	5	6	7	8	9	10	11	12	13	14	15	16	17	18
4	5	6	7	8	9	10	11	12	13	14	15	16	17	18	19	20	21
11	12	13	14	15	16	17	18	19	20	21	22	23	24	25	26	27	28
18	19	20	21	22	23	24	25	26	27	28	29	30	31				

3031

JULY		AUGUST		SEPTEMBER													
S	M	T	W	T	F	S	M	T	W	T	F	S	M	T	W	T	F
1	2	3	4	5	6	7	8	9	10	11	12	13	14	15	16	17	18
4	5	6	7	8	9	10	11	12	13	14	15	16	17	18	19	20	21
11	12	13	14	15	16	17	18	19	20	21	22	23	24	25	26	27	28
18	19	20	21	22	23	24	25	26	27	28	29	30	31				

293031

OCTOBER		NOVEMBER		DECEMBER													
S	M	T	W	T	F	S	M	T	W	T	F	S	M	T	W	T	F
1	2	3	4	5	6	7	8	9	10	11	12	13	14	15	16	17	18
3	4	5	6	7	8	9	10	11	12	13	14	15	16	17	18	19	20
10	11	12	13	14	15	16	17	18	19	20	21	22	23	24	25	26	27
17	18	19	20	21	22	23	24	25	26	27	28	29	30	31			

282930

24252627282930

2026 SUNRISE AND SUNSET

OBSERVED FROM SEA LEVEL IN LOS ANGELES

Pacific Standard Time, corrected for Daylight Saving Time

JANUARY	RISE	SET
1	6:59	4:54
8	6:59	5:00
15	6:58	5:06
22	6:56	5:13
29	6:52	5:20

FEBRUARY		
1	6:50	5:23
8	6:45	5:29
15	6:38	5:36
22	6:31	5:42
28	6:23	5:48

MARCH		
1	6:22	5:49
8	7:13	6:54
15	7:04	7:00
22	6:54	7:06
29	6:45	7:11

APRIL		
1	6:41	7:13
8	6:32	7:18
15	6:23	7:24
22	6:14	7:29
29	6:06	7:35

MAY		
1	6:04	7:36
8	5:57	7:42
15	5:52	7:47
22	5:47	7:52
29	5:44	7:57

JUNE		
1	5:43	7:59
8	5:41	8:03
15	5:41	8:06
22	5:42	8:08
29	5:45	8:08

JULY	RISE	SET
1	5:45	8:08
8	5:48	8:08
15	5:53	8:05
22	5:57	8:02
29	6:02	7:57

AUGUST		
1	6:04	7:55
8	6:09	7:48
15	6:14	7:41
22	6:19	7:33
29	6:24	7:24

SEPTEMBER		
1	6:26	7:20
8	6:31	7:11
15	6:36	7:01
22	6:41	6:50
29	6:46	6:41

OCTOBER		
1	6:47	6:38
8	6:52	6:29
15	6:58	6:20
22	7:04	6:12
29	7:10	6:04

NOVEMBER		
1	6:12	5:01
8	6:19	4:55
15	6:25	4:50
22	6:32	4:46
29	6:38	4:44

DECEMBER		
1	6:40	4:44
8	6:46	4:44
15	6:51	4:45
22	6:55	4:48
29	6:58	4:52



Download the Pumpout Nav app for free!
Locate the closest participating sewage pumpout, dump station, and floating restroom.
You can also report problems with non-functioning units, learn how to pump out, and much more.
Available for IOS and Android mobile devices.



Find an additional list of pumpout, dump station, and floating restroom locations by visiting BOATCALIFORNIA.COM/PUMPOUT or scanning this QR code.

Report Oil, Chemical and Sewage Spills

National Response Center

800.424.8802 and

California Office of Emergency Response

800.OILS.911 (800.645.7911)

The Bay Foundation

www.santamonicabay.org

888.301.2527

8117 W. Manchester Ave. #750

Playa Del Rey, CA 90293

**THIS PUBLICATION IS FUNDED BY
THE CALIFORNIA STATE PARKS DIVISION OF BOATING AND WATERWAYS
CLEAN VESSEL ACT EDUCATION AND OUTREACH PROGRAM
AND A FEDERAL CLEAN VESSEL ACT GRANT
THROUGH THE SPORT FISH RESTORATION PROGRAM.**